

Data Sheet

Type 750122

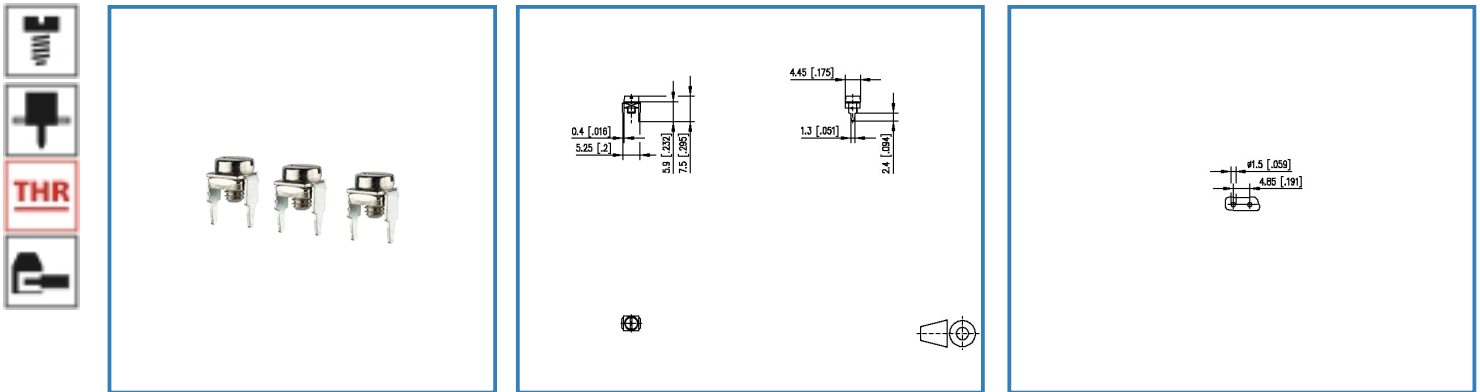
Page 1/4

P/N

750122

2017/01/24

Illustration



see enlarged drawing at the end of the document

Product specification

- screw type terminal block, THR solderable
- direction of connection 90°



Data Sheet

Type 750122

Technical Data

General Data

Tightening torque SEV	0.4 Nm
Solder pin length	2.4 mm
min. number of poles	1
max. number of poles	1
protection category	IP 00

Connection data

Rated wiring solid wire	0.05 - 0.52 mm ² / AWG 30 - 20
Rated wiring stranded wire	0.05 - 0.52 mm ² / AWG 30 - 20

Approvals

0.05 - 0.52 mm ²	AWG 30 - 20 /
-----------------------------	---------------

Material

contact material	CuSn
contact surface	Sn
terminal body material	CuZn
terminal body surface	Ni
screw surface	Ni
screw thread	M2.5

General

solderability	Acc. to IPC/JEDEC J-STD-020D-MSL 1
Tolerance	ISO 2768 -mH



Data Sheet

Type 750122

Page 3/4

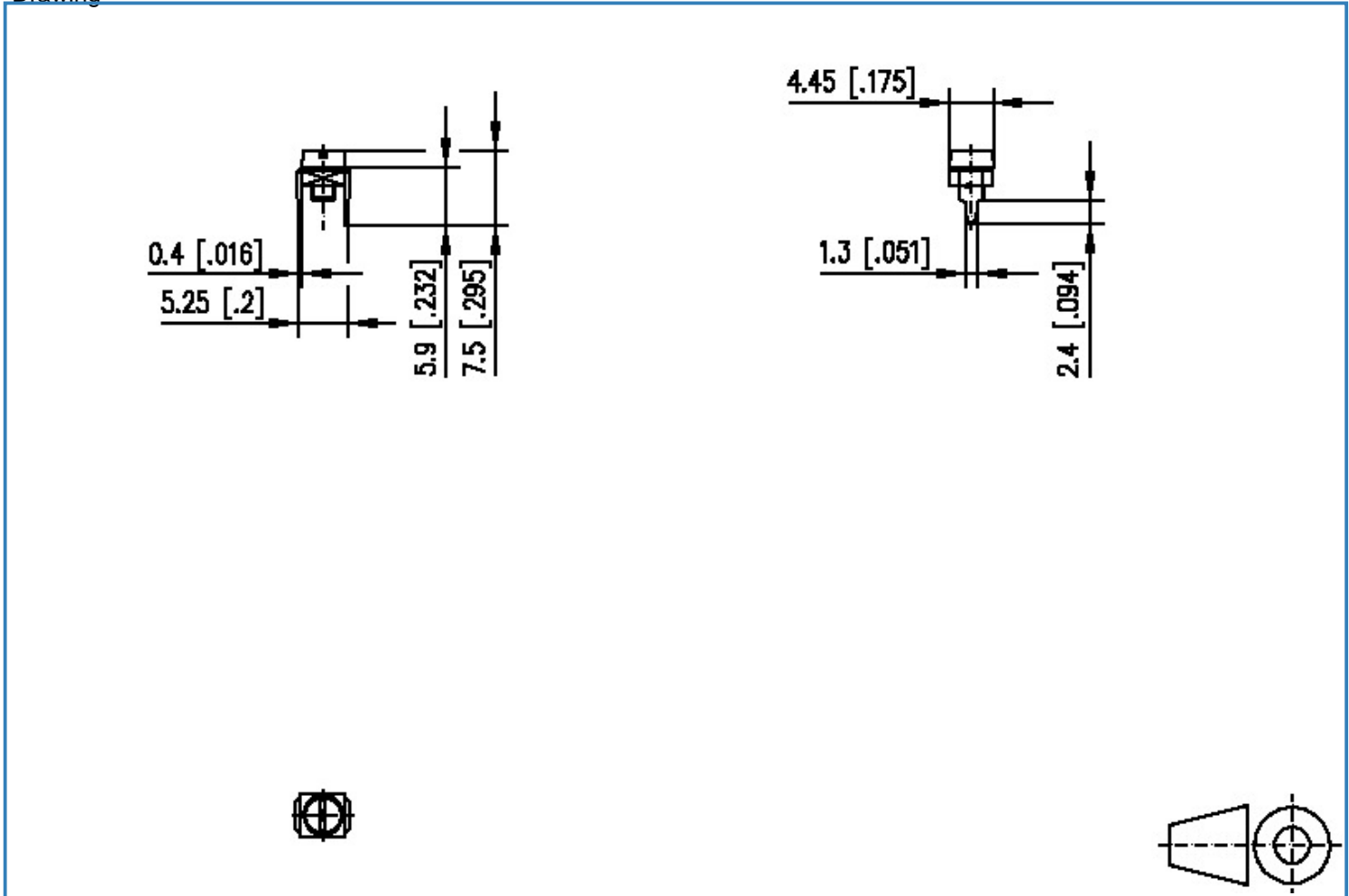
P/N

750122

2017/01/24

Illustration

Drawing



Data Sheet

Type 750122

Page 4/4

P/N

750122

2017/01/24

PCB Layout

