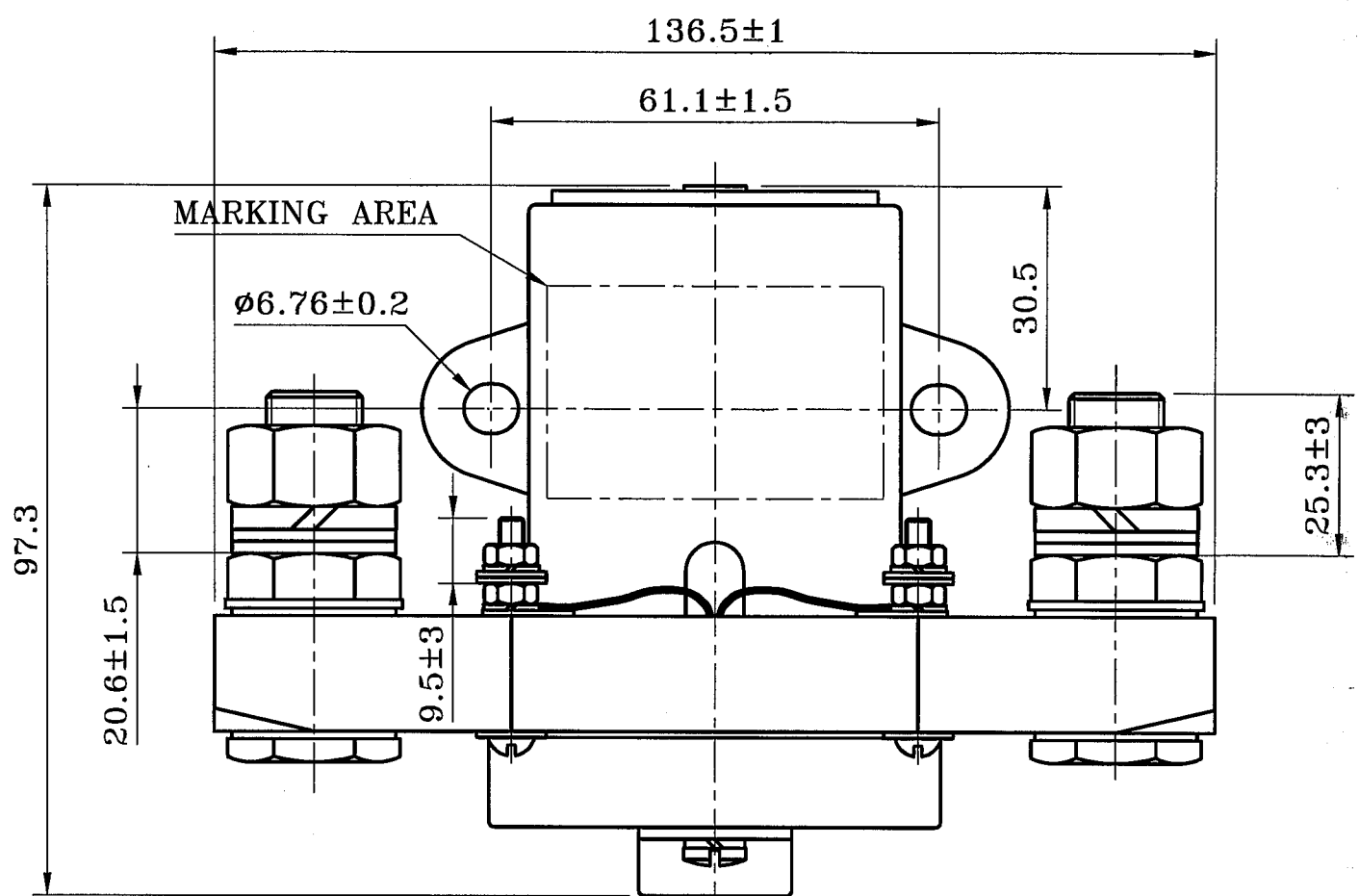
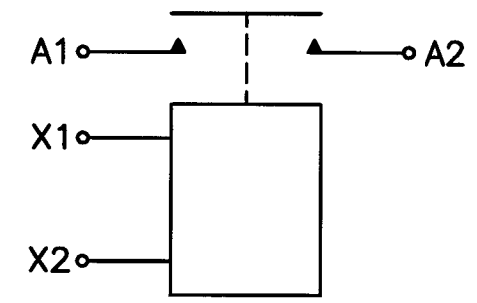


H G F E D C B A

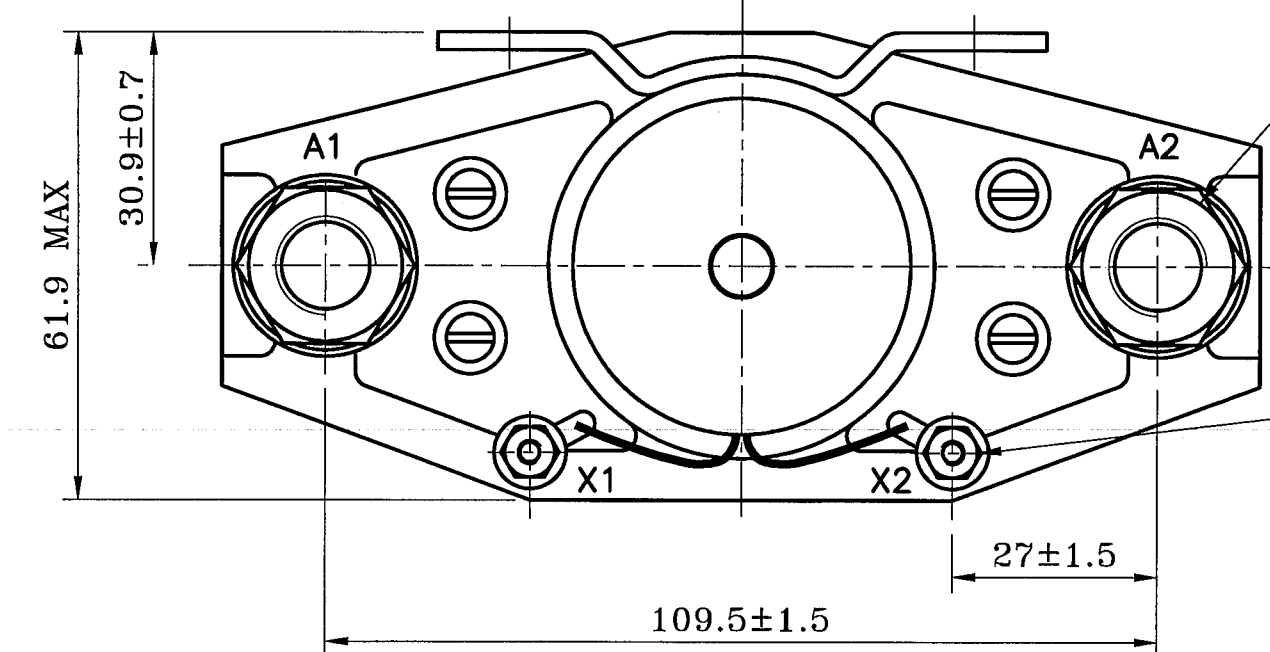


ELECROMAGNETIC RELAY 400 AMP  
1 PST N.O. TYPE II NON HERMETICALLY SEALED  
LEACH PART NUMBER: 7401-C  
MEET THE REQUIREMENT OF: MS24185-D2  
MIL-PRF-6106

CIRCUIT DIAGRAM



1/2-20UNF-2A STUD  
NUT MS35650-3395  
WASHER MS35338-105  
WASHER AN961-816  
2 PLACES



#6-32UNC-2A STUD  
NUT MS35649-265  
WASHER MS35338-98  
WASHER AN961-6  
2 PLACES

MARKING:

LEACH  
RELAY AMPERAGE AND TYPE  
COIL VOLTAGE AND RESISTANCE  
LEACH PART NUMBER  
MIL SPECIFICATION SHEET NUMBER  
DATE CODE (YEAR-WEEK)  
CIRCUIT DIAGRAM

DIMENSIONS IN MILLIMETERS  
TOLERANCES UNLESS OTHERWISE SPECIFIED: ±1.57mm

FICHIER:FT139300.DWG				Dessiné	Date	LEACH INTERNATIONAL		Code OTAN : F0219
				L.ABE	7.12.98	2, rue Goethe		tél : 03 87 97 98 97
				Vérifié	Date	57430 SARRALBE		fax : 03 87 97 31 23
5	DCN 5738	26.5.99	L.ABE	<i>2 Jos</i>	7/06/99			
4	DCN 5153	18.9.98	L.ABE	Echelle	Matière	Titre		Page
3	DCN 5088	9.9.98	L.ABE	1:1	/	DATA SHEET		1/2
2	DCN 5087	10.7.98	L.ABE	Désignation		7401-C		Indice
Ind.	Modification	Date	Nom			Référence		5
							FT 1393 00	

4  
3  
2  
1

4  
3  
2  
1

H G F E D C B A

**1. Coil data**

1.1 Nominal operating voltage	28 Vdc		
1.2 Maximum operating voltage	29 Vdc		
1.3 Pick-up voltage at + 71°C (1)	18 Vdc		
1.4 Drop out voltage over temperature range 1,5 to 7 Vdc			
1.5 Coil resistance at + 25°C	66 Ω (56.1Ω to 72.6Ω)		
1.6 Maximum coil current at + 25°C	0,6 Amp		
1.7 Exported spikes	N/A		
1.8 Imported spikes	N/A		
1.9 Dielectric strength (2)	Initial	After life	
Coil to case	1250	1000	Vrms
Coil to coil	N/A	N/A	Vrms
Coil to contact	1250	1000	Vrms
1.10 Insulation resistance (2)	Initial	After life	
Coil to case	100	50	MΩ
Coil to coil	N/A	N/A	MΩ
Coil to contact	100	50	MΩ

**2. Contact data**

Main contact

2.1 Contact Arrangement	1 PST N.O.		
	28 Vdc	115Vac/400Hz	115-200Vac/400 Hz
2.2 Resistive load	400 Amps	N/A Amp	N/A Amp
2.3 Inductive load	100 Amps	N/A Amp	N/A Amp
2.4 Motor load	400 Amps	N/A Amp	N/A Amp
2.5 Lamp load	N/A Amp	N/A Amp	N/A Amp
2.6 Mechanical-resistive load	100 Amps	N/A Amp	N/A Amp
2.7 Overload	3200 Amps	N/A Amp	N/A Amp
2.8 Rupture	4000 Amps	N/A Amp	N/A Amp
2.9 Life			
- resistive motor load	50.000	cycles	
- inductive load	10.000	cycles	
- mechanical	100.000	cycles	
- overload	50	cycles	
- rupture	50	cycles	
2.10 Contact voltage drop			
- initial	150 mV	at 400 Amps	
- during life	10%	of open contact voltage	
- after life	175 mV	at 400 Amps	
2.11 Dielectric strength (2)	Initial	After life	
contact - case	1250	1000	Vrms
contact - coil	1250	1000	Vrms
contact - contact (Main)	1250	1000	Vrms
contact - contact (Aux)	N/A	N/A	Vrms
2.12 Insulation resistance (2)	Initial	After life	
contact - case	100	50	MΩ
contact - coil	100	50	MΩ
contact - contact	100	50	MΩ

**3. Operational data**

3.1 Operate time	40 ms
3.2 Release time	15 ms
3.3 Bounce time (Main contact)	5 ms
Bounce time (Aux. contact)	N/A ms
3.4 Break-bounce time	N/A ms

All figures at nominal operating voltage

**4. Environmental data**

4.1 Temperature range	-55 to + 71°C
4.2 Altitude	50.000 Feet
4.3 Sinusoidal Vibration	0,08 " D.A. / 5 - 10 Hz 0,06 " D.A. / 10 - 55 Hz 2 G's / 55 - 500 Hz
	No contact opening in excess of 2 ms No contact closing in excess of 1 microsecond
4.4 Shock	25 G's 6-9 ms No contact opening in excess of 2 ms No contact closing in excess of 1 microsecond
4.5 Acceleration	10 G's

**5. Physical data**

5.1 Weight	1,1 kg
5.2 Terminal strength	Main cont. Aux. cont. + coil
- Qualification	445 N 133 N
- Installation	N/A N/A
Torque	
- Qualification	1695 Ncm 113 Ncm
- Installation	1271 Ncm 85 Ncm

**6 Other requirements**

6.1 Minimum current	40 Amps / 28 Vdc
6.2 Minimum current life	50.000 operations

**7. Notes**

- (1) Unit stored at max. ambient temperature with deenergized coil and unloaded contacts
- (2) During test coil terminals must be connected together

FICHER:FT139300.DWG				Dessiné	Date	LEACH INTERNATIONAL		Code OTAN : F0219
				LABE	7.12.98	2, rue Goethe		tél : 03 87 97 98 97
				Vérifié	Date	57430 SARRALBE		fax : 03 87 97 31 23
5	DCN 5738	26.5.99	LABE	205	7/6/99			
4	DCN 5153	18.9.98	LABE	Echelle	Matière	Titre		Page
3	DCN 5086	9.9.98	LABE	1:1	/	DATA SHEET		2/2
2	DCN 5067	10.7.98	LABE	Désignation	7401-C		Référence	Indice
Ind.	Modification	Date	Nom			FT 1393 00		5