

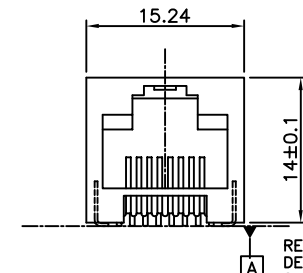
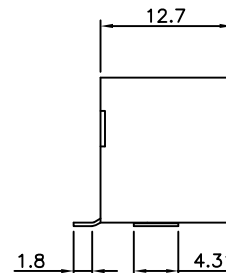
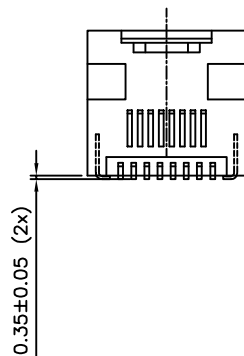
PRODUCT NUMBER
73333-XXXLF

PLATING OPTION
1= GXT 0.76 μ m
3= GOLD 0.76 μ m
5= GOLD 1.27 μ m

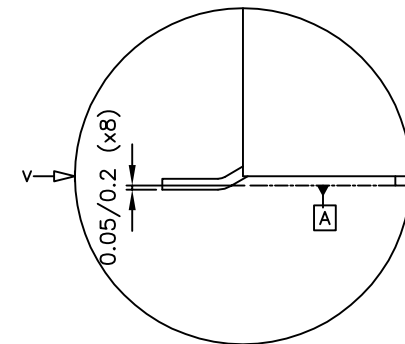
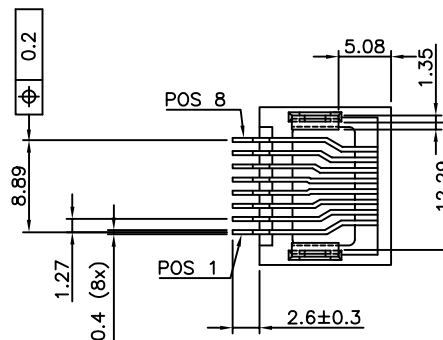
PACKAGE OPTION
1= TAPE ON REEL
2= TUBE
3= TAPE ON REEL IN PLASTIC BAG

TERMINAL LOADING
1= FULLY LOADED
2= POS 1,2,7,8
3= POS 3,4,5,6

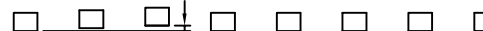
WHEN NEEDED, SUFFIX LETTER "LF" INDICATES THE PRODUCT IS RoHS COMPATIBLE, SEE NOTE 4.



REFERENCE PLAN DEFINED BY THE 2 HOLD DOWN BEARING SURFACE



VIEW ACCORDING "V"



SEE NOTE 3

NOTES:

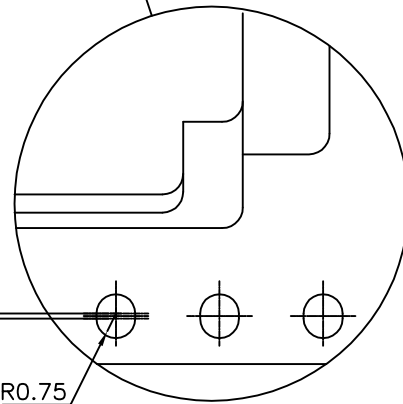
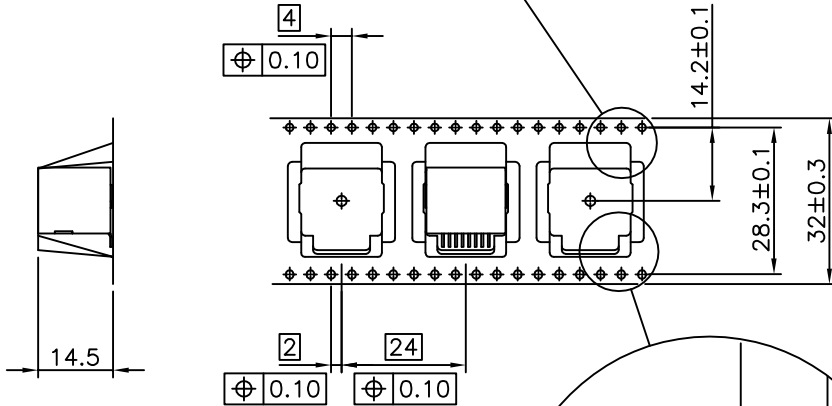
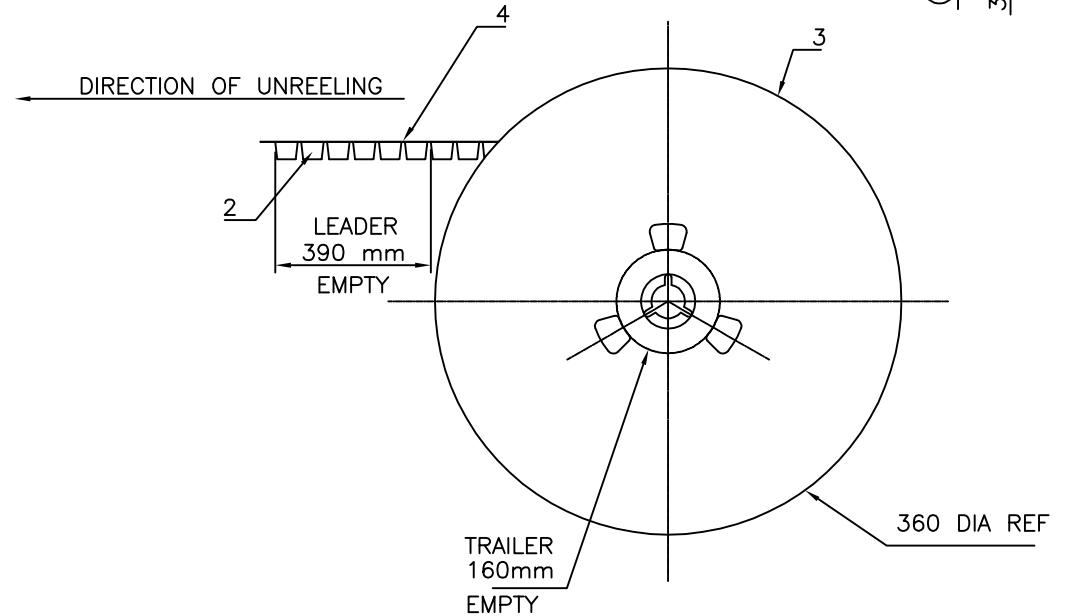
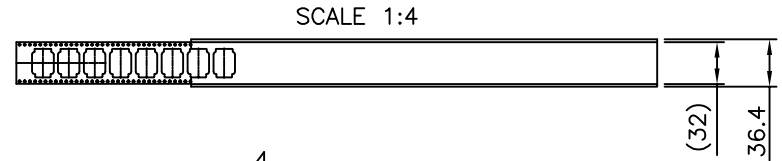
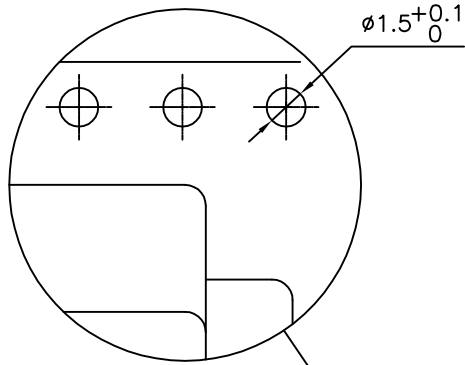
- 1 - MATERIAL: HOUSING: HIGH TEMP. NYLON, COLOUR BLACK.
TERMINAL: PHOSPHOR BRONZE.
- 2 - PLATING: CONTACT AREA: SEE TABLE.
SOLDER TAIL : 90/10 SnPb 2 μ m MIN.
WHEN SUFFIX "LF" IS REQUIRED, 2 μ m MIN MATTE TIN OVER 1.27 MIN Ni IS SUPPLIED INSTEAD OF SnPb.
NO RAW EDGES EXCEPT SOLDER TAIL TIPS
- 3 - SOLDER TAILS COPLANARITY : 0.1 mm
- 4 - RoHS COMPATIBLE PRODUCT SPECIFICATIONS
 - a - PLATING:
 - "LF" MEANS THE PRODUCT IS LEAD-FREE, 2 μ m MINIMUM MATTE TIN OVER 1.27 μ m MINIMUM NICKEL UNDERPLATE.
 - b - MANUFACTURING PROCESS COMPATIBILITY
 - THE HOUSING WILL WITHSTAND EXPOSURE TO 245°C PEAK TEMPERATURE FOR 30 SECONDS MAX IN A CONVECTION, INFRA-RED OR VAPOR PHASE OR REFLOW OVEN.
 - c - LABELING:
 - MEETS PACKAGING SPECS AS PER GS-14-920
 - d - LEGAL STATEMENT: SEE GS-22-008
- 5 - PACKAGING FOR OPTION 3 : EACH REEL IS WRAPPED INTO A PLASTIC BAG TO PROTECT FROM MOISTURE DURING STACKING TIME.

CUSTOMER COPY FOR REFERENCE ONLY

mat'l. code		surface		tolerance		projection		product family	
		ISO 1302		ISO 406 ISO 1101				MODULAR JACK	
ltr		ecn no		date		angles		title	
H		F06-0240		DLE 06.07.18		linear ±0.13		SMT RA JACK	
J		F10-0239		APA 10.10.25		±2'		8 POS INSIDE	
D		V20289		LP 02.06.02		dr		scale 2:1	
E		F03020		DLE 03.01.27		engr		dwg no	
F		F04-0363		DLE 04.10.19		chr		sheet 1 of 3	
G		F05-0247		DLE 05.09.12		appd		size	
						P NZ		A3	
sheet		revision		H		D		type	
index		sheet		1		2		CUSTOMER Drawing	

PRODUCT NUMBER
SEE SHEET 1

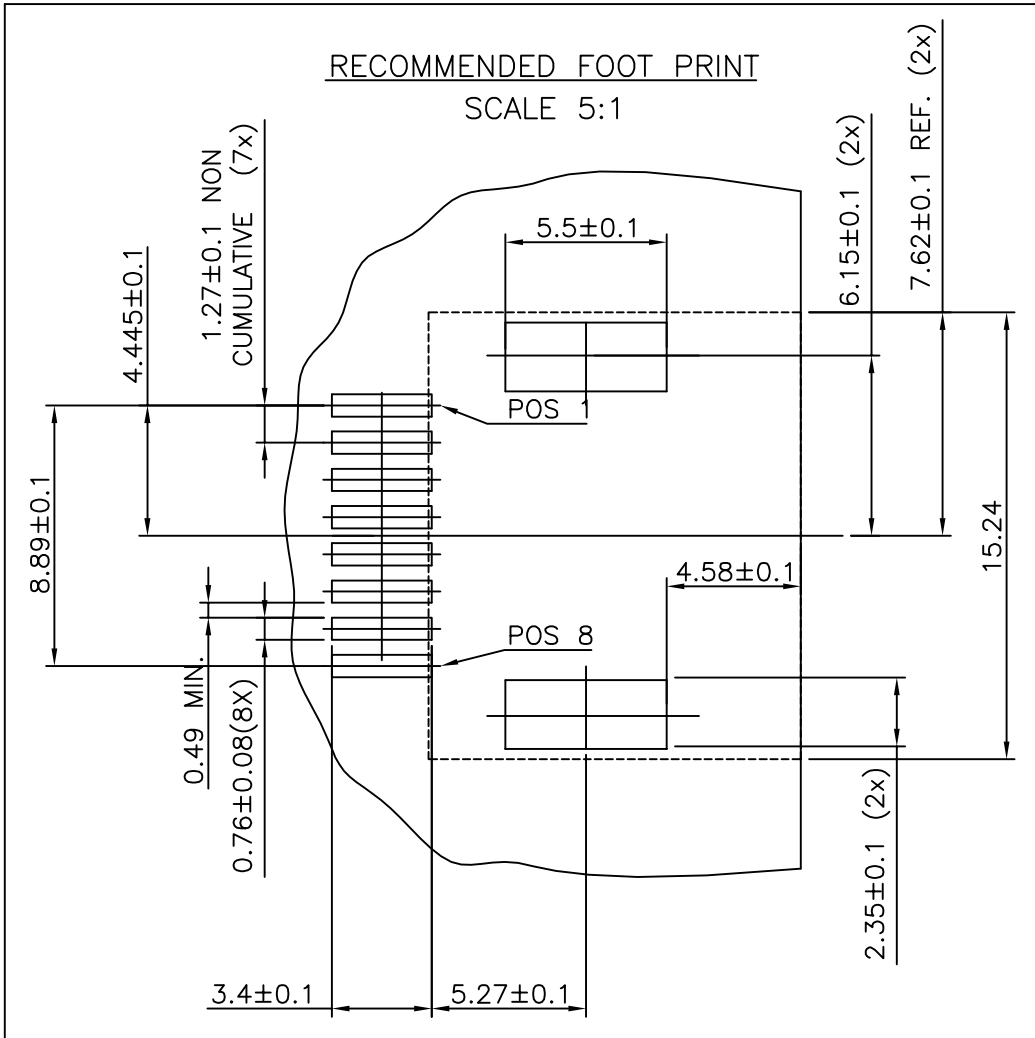
LTR	PART NAME	QTY
1	PRODUCT	230
2	TAPE	1
3	REEL	1
4	COVER TAPE	1



1- IN ACCORDANCE WITH EIA-481 AND IEC 296-3

CUSTOMER COPY FOR REFERENCE ONLY

mat'l. code		surface		tolerance		projection		product family	
		ISO 1302		ISO 406 ISO 1101		mm		MOD-JACK	
ltr	ecn no	dr	date	tolerances unless otherwise specified				title	
C	F80620	DLE	98.11.26	angles				SMT RA JACK	
D	F06-0240	DLE	06.07.18	linear				8 POS. INSIDE	
				dr		D LEGRAND		06.07.18	
				enr		P NIZZI		06.07.18	
				chr		D LE		06.07.18	
				appd		P NZ		06.07.18	
sheet index		revision sheet						dwg no	
								73333	
								sheet 2 of 3	
								A3	
								type	
								CUSTOMER Drawing	



CUSTOMER COPY FOR REFERENCE ONLY

mat'l. code			surface ISO 1302 <input checked="" type="checkbox"/>		tolerance ISO 406 ISO 1101		projection 		product family MODULAR JACK		
ltr			ecn no		dr		date		title		
A			F04-0363		DLE		04.10.19		SMT RA JACK 8 POS INSIDE		
B			F06-0240		DLE		06.07.18				
			tolerances unless otherwise specified		±0.13		mm		scale 2:1		
			angles		linear		±2'		dwg no		
			dr		D LEGRAND		04.10.19		sheet 3 of - size		
			enrg		P NIZZI		04.10.19		73333 A4		
			chr		D LEGRAND		04.10.19		type		
			appd		P NZ		04.10.19		CUSTOMER Drawing		
sheet index		revision sheet									



FCIconnect.com

Copyright FCI

