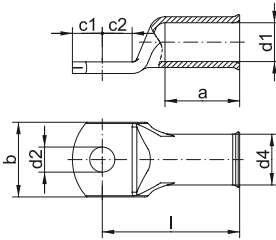


Tubular cable lugs, Cu, F-series



- ▶ For fine and superfine stranded round conductors, e.g. to DIN EN 60228 Cl. 5 and 6
- ▶ Pipe dimension adjusted for fine and superfine stranded conductors
- ▶ Special wide opening for the easy entry of fine conductors

Characteristics

- Annealed material optimises material and crimping properties
- To DIN EN 61373 class 1B vibration-tested
- Simple and safe connection due to flat contact surfaces and internal chamfer
- Reliable assignment owed to item designation on the cable lug

Material

- Copper (EN13600)

Surface

- Tin-plated to protect against corrosion

Technical instructions

- Tool: see page 42

Additional information

- Possible as a special bright version on request. Part Number appendix „BK“
- 10 - 240 mm² UL-tested

Nominal cross section mm ²	Size of bolt dia.	Part No.	Dimension mm								Weight/ 100 pcs. ~ kg	Packing unit/pcs
			d1	a	b	d2	d4	c1	c2	l		
10	M5	702F5	5.5	14	12	5.5	8.0	6.25	7.5	27	0.72	100
	M6	702F6	5.5	14	12	6.5	8.0	6.25	7.5	27	0.71	100
	M8	702F8	5.5	14	16	8.4	8.0	9.00	9.5	29	0.77	100
	M10	702F10	5.5	14	16	10.5	8.0	10.50	11.5	31	0.82	100
	M12	702F12	5.5	14	19	13.0	8.0	12.00	13.0	32	0.82	100
16	M5	703F5	6.6	15	13	5.5	9.5	6.25	7.5	30	1.10	100
	M6	703F6	6.6	15	13	6.4	9.5	6.25	7.5	30	1.07	100
	M8	703F8	6.6	15	16	8.4	9.5	10.00	10.0	32	1.21	100
	M10	703F10	6.6	15	17	10.5	9.5	12.00	12.0	34	1.28	100
	M12	703F12	6.6	15	19	13.0	9.5	13.00	13.0	35	1.28	100
25	M5	704F5	7.9	17	15.5	5.3	11.0	7.50	7.5	32	1.52	25
	M6	704F6	7.9	17	15.5	6.5	11.0	7.50	7.5	32	1.50	100
	M8	704F8	7.9	17	17	8.4	11.0	10.00	10.0	34	1.61	100
	M10	704F10	7.9	17	17	10.5	11.0	12.00	12.0	37	1.71	100
	M12	704F12	7.9	17	19	13.0	11.0	13.00	13.0	38	1.74	25
35	M6	705F6	9.2	19	17.5	6.4	12.4	7.50	7.5	35	1.91	100
	M8	705F8	9.2	19	18	8.4	12.4	10.00	10.0	37	2.08	100
	M10	705F10	9.2	19	18	10.5	12.4	12.00	12.0	40	2.24	100
	M12	705F12	9.2	19	19	13.0	12.4	13.00	13.0	41	2.22	25
	M14	705F14	9.2	19	21	15.0	12.4	14.50	14.5	43	2.41	25
50	M6	706F6	11.0	21	21	6.4	15.0	10.00	10.0	41	3.54	25
	M8	706F8	11.0	21	21	8.4	15.0	10.00	10.0	41	3.44	50
	M10	706F10	11.0	21	21	10.5	15.0	12.00	12.0	43	3.64	50
	M12	706F12	11.0	21	21	13.0	15.0	13.00	13.0	46	3.73	50
	M14	706F14	11.0	21	23	15.0	15.0	14.50	14.5	48	3.89	25
	M16	706F16	11.0	21	28	17.0	15.0	16.00	16.0	50	4.02	25

See next page



Tubular cable lugs, Cu, F-series

Nominal cross section mm ²	Size of bolt dia.	Part No.	Dimension mm								Weight/ 100 pcs. ~ kg	Packing unit/pcs
			d1	a	b	d2	d4	c1	c2	l		
70	M8	707F8	13.0	25	25	8.5	17.0	10.00	10.0	46	4.46	50
	M10	707F10	13.0	25	25	10.5	17.0	12.00	12.0	48	4.62	50
	M12	707F12	13.0	25	25	13.0	17.0	13.00	13.0	50	4.71	50
	M14	707F14	13.0	25	25	15.0	17.0	14.50	14.5	51.5	4.87	25
	M16	707F16	13.0	25	25	17.0	17.0	16.00	16.0	54	5.85	25
95	M8	708F8	14.5	26	28	8.5	19.0	12.00	12.0	52	6.35	25
	M10	708F10	14.5	26	28	10.5	19.0	12.00	12.0	52	6.23	50
	M12	708F12	14.5	26	28	13.0	19.0	13.00	13.0	53	6.31	50
	M14	708F14	14.5	26	28	15.0	19.0	14.50	14.5	55	6.46	25
	M16	708F16	14.5	26	28	17.0	19.0	16.00	16.0	56	6.56	50
120	M10	709F10	16.2	30	30	10.5	21.0	14.00	14.0	57	8.31	50
	M12	709F12	16.2	30	30	13.0	21.0	15.00	15.0	58	8.39	50
	M14	709F14	16.2	30	30	15.0	21.0	15.00	15.0	58	8.06	25
	M16	709F16	16.2	30	30	17.0	21.0	16.00	16.0	59	8.17	50
	M20	709F20	16.2	30	36	21.0	21.0	22.00	22.0	66	9.56	25
150	M10	710F10	18.0	32	34	10.5	23.0	15.00	16.0	64	10.91	10
	M12	710F12	18.0	32	34	13.0	23.0	16.00	17.0	65	10.89	25
	M14	710F14	18.0	32	34	15.0	23.0	18.00	19.0	67	11.42	10
	M16	710F16	18.0	32	34	17.0	23.0	19.00	20.0	68	11.30	10
	M20	710F20	18.0	32	40	21.0	23.0	21.00	22.0	70	11.36	10
185	M10	711F10	20.6	35	39	10.5	26.0	21.50	19.0	72	15.60	10
	M12	711F12	20.6	35	39	13.0	26.0	21.50	19.0	72	15.40	10
	M14	711F14	20.6	35	39	15.0	26.0	21.50	19.0	72	15.20	10
	M16	711F16	20.6	35	39	17.0	26.0	21.50	19.0	72	15.00	25
	M20	711F20	20.6	35	39	21.0	26.0	21.50	19.0	72	14.20	10
240	M10	712F10	23.1	44	41	10.5	28.0	16.00	17.0	80	16.50	10
	M12	712F12	23.1	44	42	13.0	28.0	16.00	17.0	80	16.30	10
	M14	712F14	23.1	44	41	15.0	28.0	19.00	20.0	83	16.80	10
	M16	712F16	23.1	44	41	17.0	28.0	19.00	20.0	83	16.71	25
	M20	712F20	23.1	44	41	21.0	28.0	21.00	22.0	85	17.12	10
300	M12	713F12	26.1	44	47	13.0	32.0	19.00	22.0	96	25.60	5
	M14	713F14	26.1	44	47	15.0	32.0	19.00	22.0	96	26.56	5
	M16	713F16	26.1	44	47	17.0	32.0	19.00	22.0	96	25.60	5
	M20	713F20	26.1	44	47	21.0	32.0	22.00	22.0	96	26.24	5