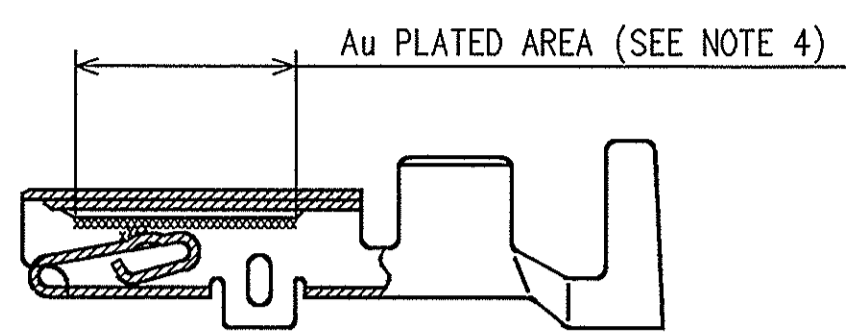
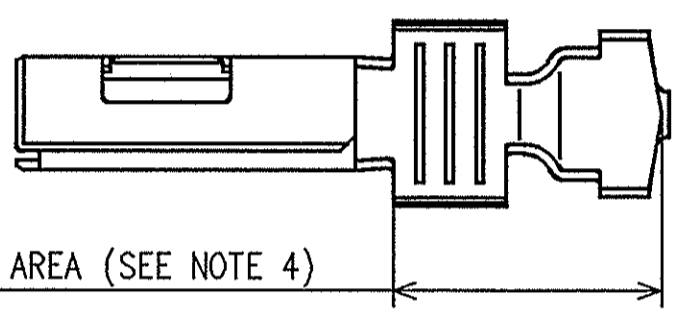


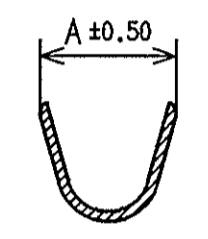
7116-4025	22 ~ 20	0.30 ~ 0.50	2.30	5.20
7116-4028-08				
7116-4026	18 ~ 16	Δ 0.85 ~ 1.25	3.00	5.30
7116-4029-08				
7116-4027	14	2.0	4.20	6.00
PART NUMBER	AWG	mm ²	A	B
	APPLICABLE WIRE SIZE		GRIP DIMENSIONS	



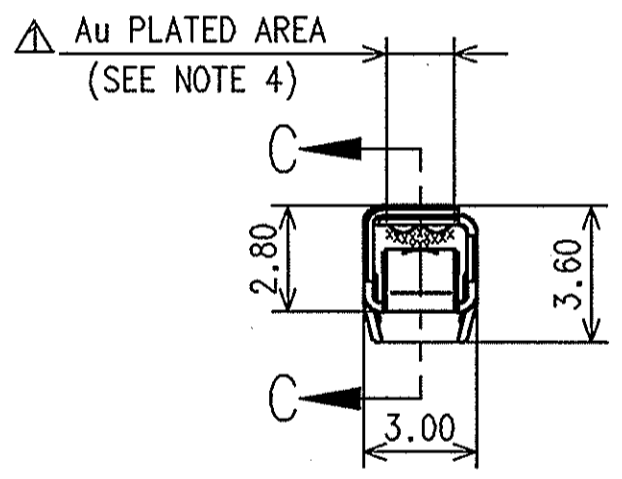
Δ SECTION C-C



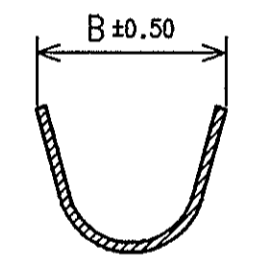
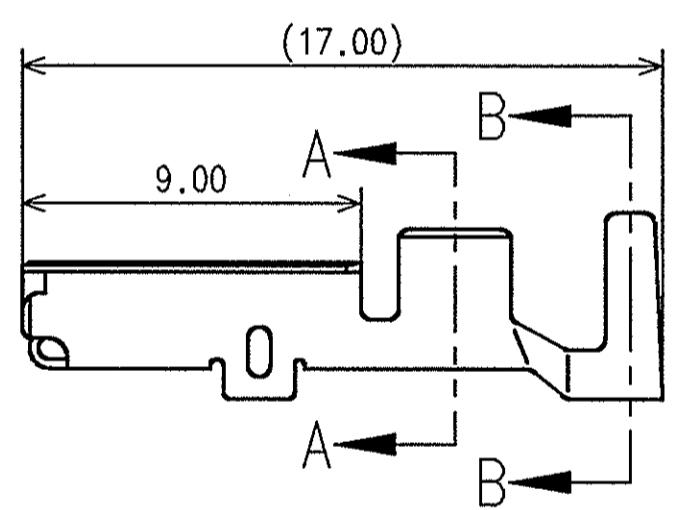
Δ Sn PLATED AREA (SEE NOTE 4)



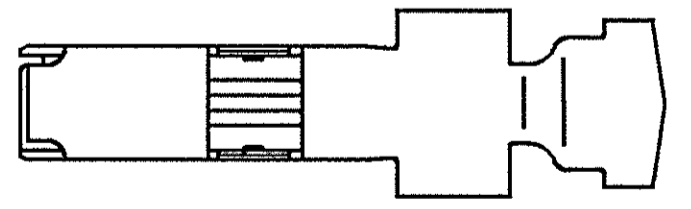
SECTION A-A



Δ Au PLATED AREA (SEE NOTE 4)



SECTION B-B



- NOTES:
- THIS DRAWING MUST BE USED FOR INTERNAL YAZAKI PSW SUBMISSION FOR GENERAL MOTORS APPLICATION.
 - PART MUST BE FREE OF BURRS OR SHARP EDGES THAT MAY BE DETRIMENTAL TO SATISFACTORY ASSEMBLY, SAFE HANDLING OR FUNCTION OF PART.
 - MATERIAL: COPPER ALLOY.
 - PLATING: 7116-4025 (Sn) TIN PLATED (ALL OVER)
7116-4026 (Sn) TIN PLATED (ALL OVER)
7116-4027 (Sn) TIN PLATED (ALL OVER)
7116-4028-08 (Au) GOLD AND TIN PLATED AS SHOWN
7116-4029-08 (Au) GOLD AND TIN PLATED AS SHOWN
 - MATING TERMINAL: 7114-4025 ETC.
 - PARTS MUST BE PURCHASED FROM YAZAKI.
 - APPLICABLE WIRE SEAL: SEE 7158-3006-90:GP DRAWING
 - PART TO COMPLY WITH YPES-31-038 REQUIREMENTS.

ISSUE MARK

Δ	04.21.09	REVISED TABLE, NOTES AND ADDED SECTION VIEW	C09-A316	M.R.
-	09.14.01	NEW	C01-B060	B.C.
LET	DATE	REVISION RECORD	NO.	CHKD

GENERAL TOLERANCE							
	10 MAX	50 MAX	100 MAX	250 MAX	250 OVR	ANGLE	ECCENT
A	± 0.15	± 0.2	± 0.3	± 0.5	± 0.75	± 30'	0.1
B	± 0.2	± 0.3	± 0.55	± 0.95	± 1.4	± 30'	0.1
Ⓢ	± 0.3	± 0.5	± 0.8	± 1.4	± 2	± 30'	0.15
SPECIFIED						WEIGHT	!

CUSTOMER GENERAL MOTORS		MATL. SPEC.	SEE NOTES	TREAT & FIN.
CUSTOMER PART NO.	CUSTOMER DWG NO.	NAME 090-11 FEMALE SEALED		
N/A		TERMINAL		
OFFICE YNA	STDLIB NO.	PART NO. 7116-4025 ETC.		
VENDOR		DWG NO. 7116-4025:GP		
VENDOR NO.		YAZAKI CORPORATION		
DWG TYPE	DWG SOURCE	DWG DATE	UNIT	SCL
R	7116-4025:M	09.14.01	mm	5/1
APPROVED	CHECKED	CHECKED	DESIGN	DRAWN
	<i>[Signature]</i>	<i>[Signature]</i>	M. TSUJI	BERNARDO OLIVAS
	05.06.09	05.21.09	08.26.87	04.21.09