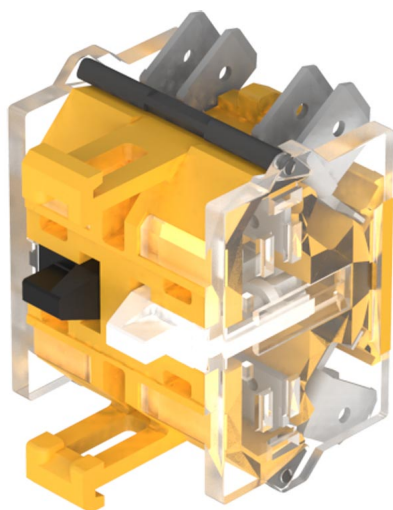


# EAO – Your Expert Partner for Human Machine Interfaces

## 704.901.5/D - Switching element

### 704.901.5/D - Switching element



*Attention: The preview is based on a sample product. This can differ from your current configuration.*

#### Mounting

Mounting cut-out mm

#### Other Attributes

Weight 0,033 kg

#### Connection Method

Terminal Double plug 6.3 x 0.8 mm

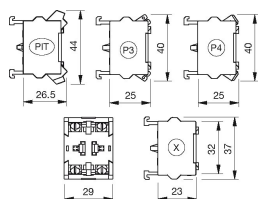
#### Switching element

Switching current 6 A  
Switching voltage 500 V AC  
Switching system Snap-action switching element  
Contacts 1 NC + 1 NO  
Contact material

# EAO – Your Expert Partner for Human Machine Interfaces

704.901.5/D - Switching element

## Dimensions



P4 = Double plug-in terminal 6.3 x 0.8 mm

## Wiring diagram



## Additional information

For the third switching element the terminal marking insert is to be ordered separately