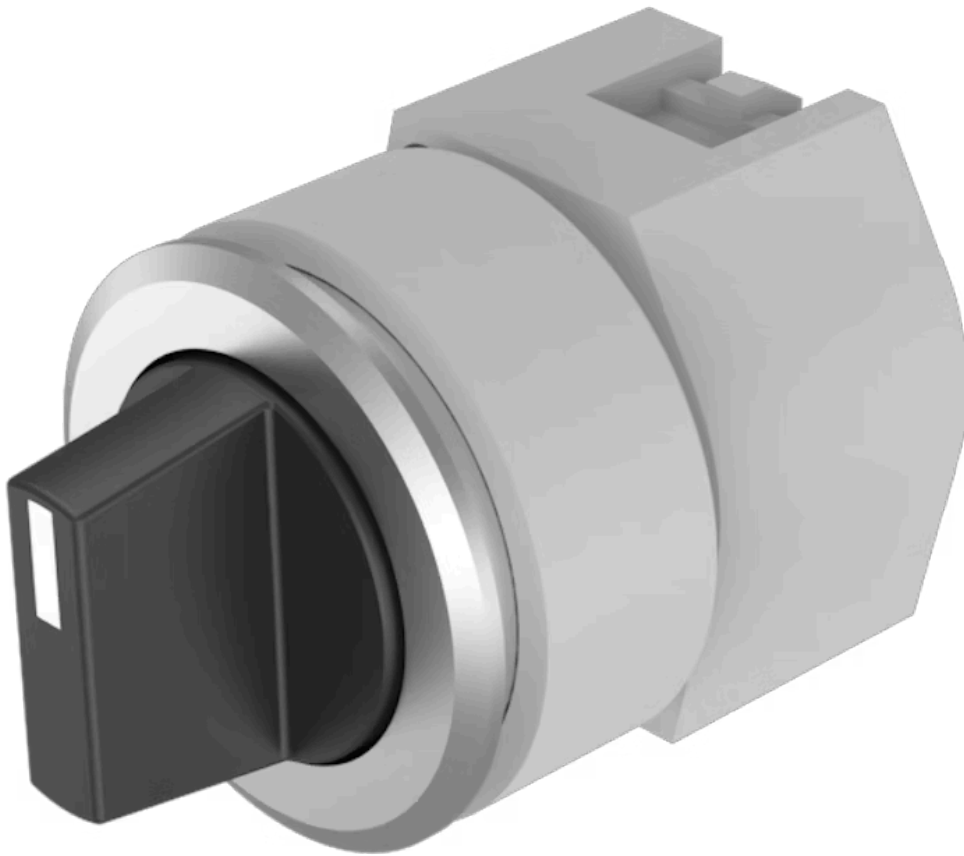


Actuator

704.411.018



<https://eao.com/p/704.411.018>

Your product:



704.411.018 Actuator

FRONT

Front bezel colour:	Nature
Front dimension:	Ø 35 mm
Front bezel material:	Aluminium

MOUNTING

Design:	flush
----------------	-------

OPERATING-/INDICATION PART

Lever shape:	short
Lever material:	plastic
Lever colour:	Black

ELECTRICAL CHARACTERISTICS

Standards:	The switches comply with the "Standards for low-voltage switching devices" DIN EN 60947-1
-------------------	---

MECHANICAL CHARACTERISTIC

Switching positions:	2 positions
Switching action:	Rest - Maintained
Mechanical lifetime:	≤2.5 Mio. cycles of operation
Switching angle:	90° right / -45° ... +45°
Weight:	0.056 kg

AMBIENT CONDITION

Operating temperature: - 40 °C ... + 55 °C
IP Protection: IP65 front side
Storage temperature: - 40 °C ... + 85 °C

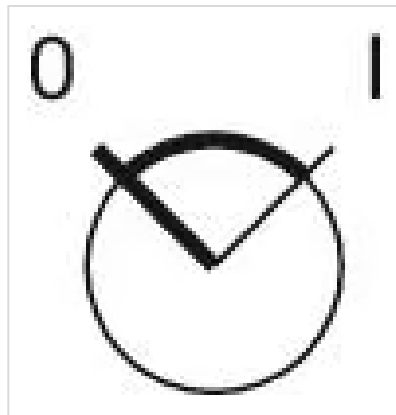
OTHER

max. number of switching elements: 3

Hints: Max. 3 switching elements can be clipped on

Short Description: Actuator, Ø 35 mm, non illuminative, Black, short, Nature, Aluminium, anodised, Rest - Maintained

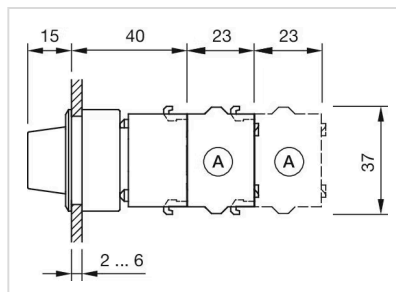
Switching positions:



Wiring diagrams:



Dimension drawings:



Mounting cut-outs:

