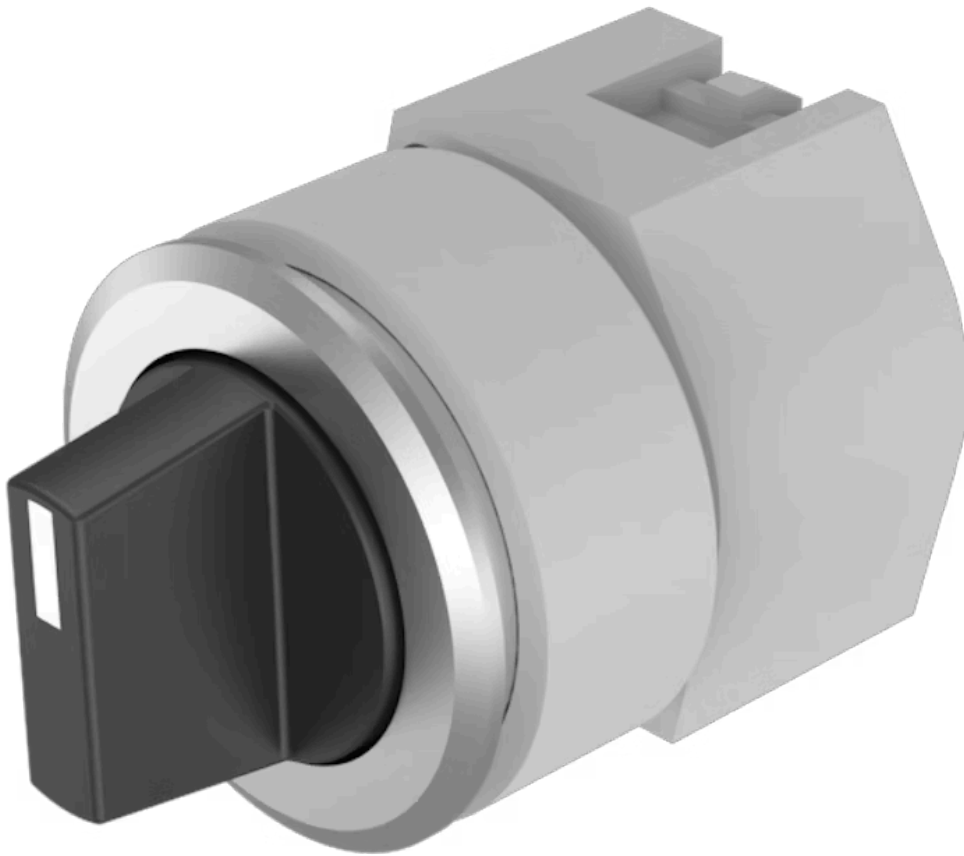


Actuator

704.403.010



<https://eao.com/p/704.403.010>

Your product:



704.403.010 Actuator

FRONT

Front bezel material:	Aluminium
Front bezel colour:	Black
Front dimension:	Ø 35 mm

MOUNTING

Design:	flush
----------------	-------

OPERATING-/INDICATION PART

Lever shape:	short
Lever material:	plastic
Lever colour:	Black

ELECTRICAL CHARACTERISTICS

Standards:	The switches comply with the "Standards for low-voltage switching devices" DIN EN 60947-1
-------------------	---

MECHANICAL CHARACTERISTIC

Switching positions:	3 positions
Switching angle:	42° left / 42° right
Switching action:	Maintained - Rest - Maintained
Weight:	0.056 kg
Mechanical lifetime:	≤2.5 Mio. cycles of operation

AMBIENT CONDITION

Storage temperature: - 40 °C ... + 85 °C

Operating temperature: - 40 °C ... + 55 °C

IP Protection: IP65 front side

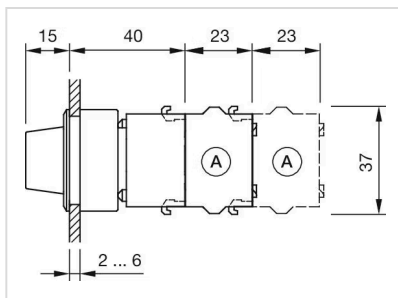
OTHER

Short Description: Actuator, Ø 35 mm, non illuminative, Black, short, Black, Aluminium, anodised, Maintained - Rest - Maintained

Hints: Max. 3 switching elements can be clipped on

max. number of switching elements: 3

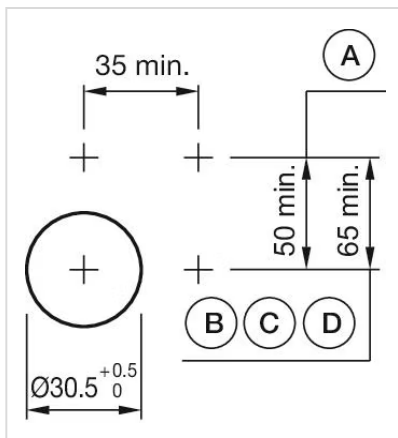
Dimension drawings:



Wiring diagrams:



Mounting cut-outs:



Switching positions:

