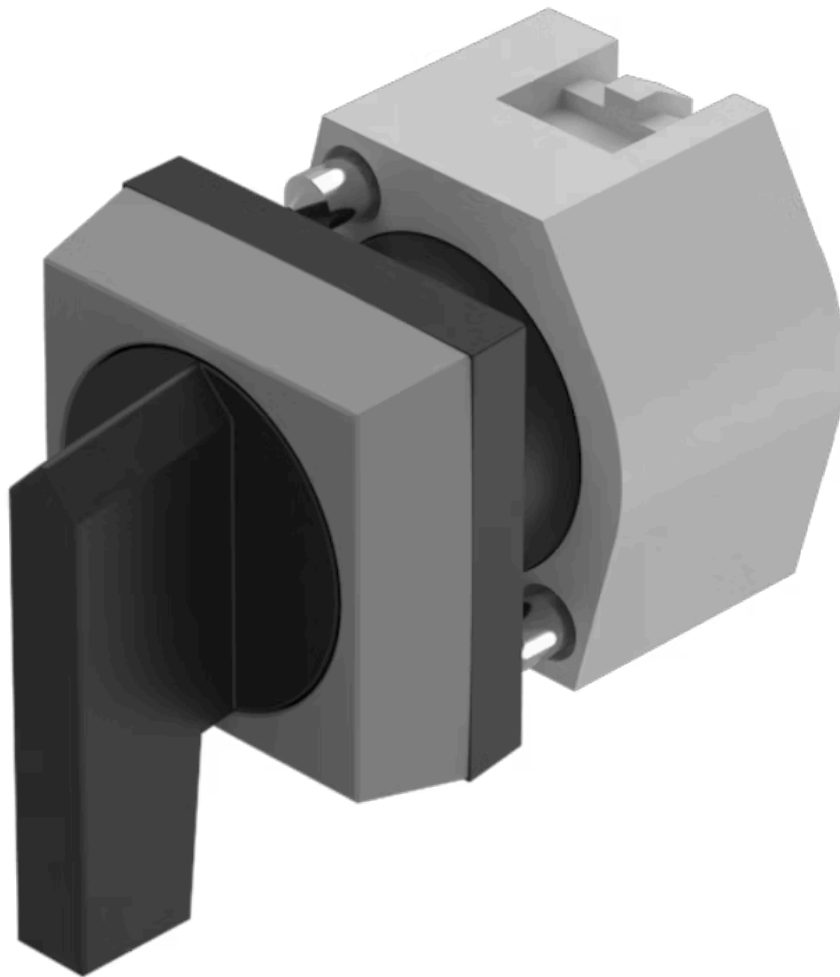


# Actuator

704.300.0



<https://eao.com/p/704.300.0>

Your product:

---



## 704.300.0 Actuator

### FRONT

<b>Front dimension:</b>	30 mm x 30 mm
<b>Front bezel colour:</b>	Grey
<b>Front bezel material:</b>	Plastic

### MOUNTING

<b>Design:</b>	raised
----------------	--------

### OPERATING-/INDICATION PART

<b>Lever material:</b>	plastic
<b>Lever shape:</b>	long
<b>Lever colour:</b>	Black

### ELECTRICAL CHARACTERISTICS

<b>Standards:</b>	The switches comply with the "Standards for low-voltage switching devices" DIN EN 60947-1
-------------------	---

### MECHANICAL CHARACTERISTIC

<b>Weight:</b>	0.034 kg
<b>Mechanical lifetime:</b>	≤2.5 Mio. cycles of operation
<b>Switching action:</b>	Rest - Maintained
<b>Switching positions:</b>	2 positions
<b>Switching angle:</b>	90° right / -45° ... +45°

**AMBIENT CONDITION**

**Storage temperature:** - 40 °C ... + 85 °C

**Operating temperature:** - 40 °C ... + 55 °C

**IP Protection:** IP65 front side

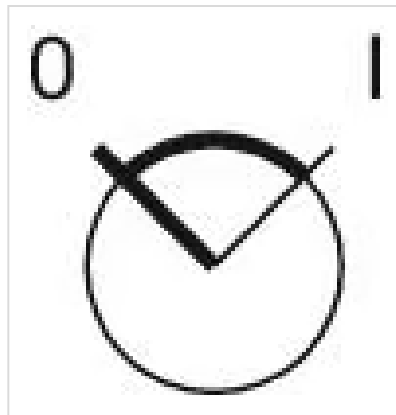
**OTHER**

**max. number of switching elements:** 3

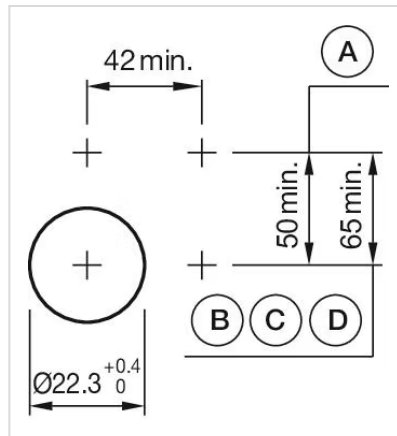
**Hints:** Max. 3 switching elements can be clipped on

**Short Description:** Actuator, 30 mm x 30 mm, non illuminative, Black, long, Grey, Plastic, Rest - Maintained

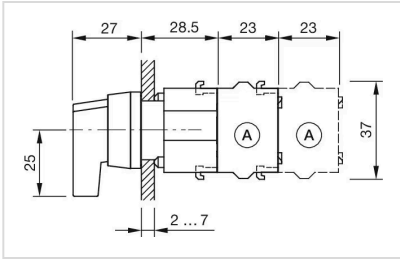
**Switching positions:**



**Mounting cut-outs:**



**Dimension drawings:**



**Wiring diagrams:**

