

Actuator

704.101.018



<https://eao.com/p/704.101.018>

Your product:



704.101.018 Actuator

FRONT

Front dimension:	Ø 35 mm
Front bezel colour:	Nature
Front bezel material:	Aluminium

MOUNTING

Design:	flush
----------------	-------

OPERATING-/INDICATION PART

Lever colour:	Black
Lever shape:	long
Lever material:	plastic

ELECTRICAL CHARACTERISTICS

Standards:	The switches comply with the "Standards for low-voltage switching devices" DIN EN 60947-1
-------------------	---

MECHANICAL CHARACTERISTIC

Switching positions:	2 positions
Weight:	0.056 kg
Switching action:	Rest - Maintained
Mechanical lifetime:	≤2.5 Mio. cycles of operation
Switching angle:	90° right / -45° ... +45°

AMBIENT CONDITION

Operating temperature:	- 40 °C ... + 55 °C
IP Protection:	IP65 front side
Storage temperature:	- 40 °C ... + 85 °C

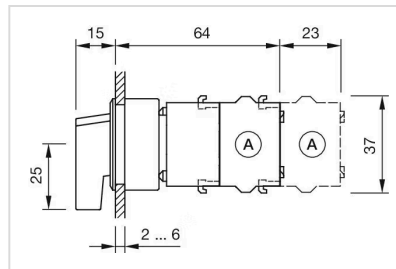
OTHER

Hints: Max. 3 switching elements can be clipped on

Short Description: Actuator, Ø 35 mm, non illuminative, Black, long, Nature, Aluminium, anodised, Rest - Maintained

max. number of switching elements: 3

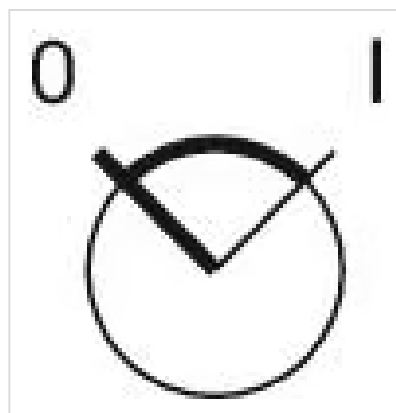
Dimension drawings:



Wiring diagrams:



Switching positions:



Mounting cut-outs:

