

Actuator

704.093.018



<https://eao.com/p/704.093.018>

Your product:



704.093.018 Actuator

FRONT

Front dimension:	Ø 35 mm
Front bezel material:	Aluminium
Front bezel colour:	Nature

MOUNTING

Design:	flush
----------------	-------

OPERATING-/INDICATION PART

Lever material:	plastic
Lever colour:	Black
Lever shape:	long

ELECTRICAL CHARACTERISTICS

Standards:	The switches comply with the "Standards for low-voltage switching devices" DIN EN 60947-1
-------------------	-------------------------------------------------------------------------------------------

MECHANICAL CHARACTERISTIC

Mechanical lifetime:	≤2.5 Mio. cycles of operation
Weight:	0.056 kg
Switching action:	Maintained - Rest - Maintained
Switching angle:	42° left / 42° right
Switching positions:	3 positions

AMBIENT CONDITION

Operating temperature: - 40 °C ... + 55 °C
IP Protection: IP65 front side
Storage temperature: - 40 °C ... + 85 °C

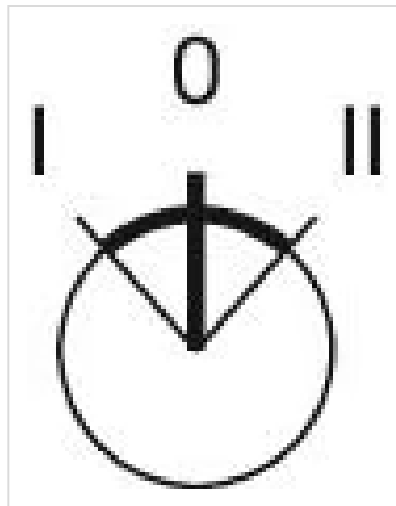
OTHER

Short Description: Actuator, Ø 35 mm, non illuminative, Black, long, Nature, Aluminium, anodised, Maintained - Rest - Maintained

Hints: Max. 3 switching elements can be clipped on

max. number of switching elements: 3

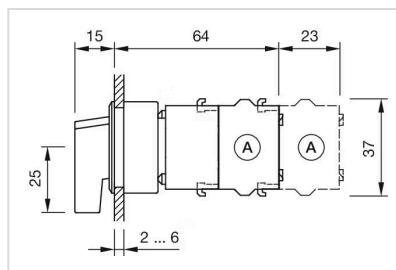
Switching positions:



Wiring diagrams:



Dimension drawings:



Mounting cut-outs:

