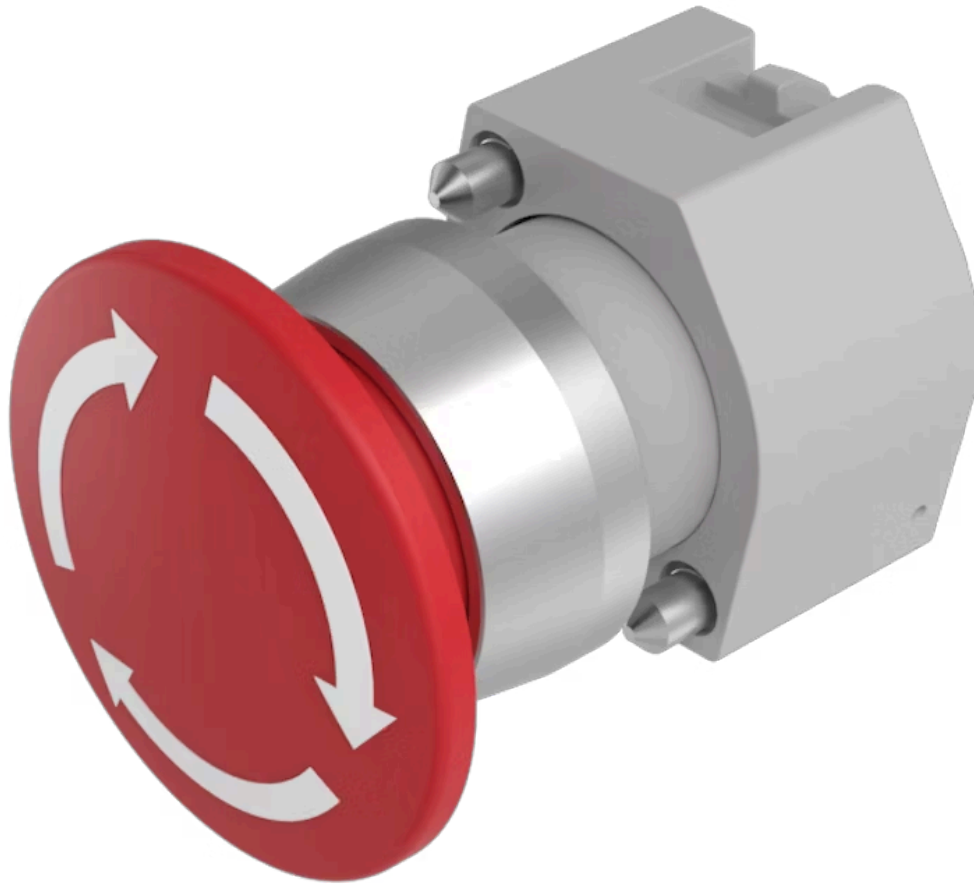


Actuator

704.075.2



<https://eao.com/p/704.075.2>

Your product:



704.075.2 Actuator

FRONT

Front dimension:	Ø 40 mm
Front bezel material:	Aluminium
Front bezel colour:	Nature

MOUNTING

Design:	raised
----------------	--------

OPERATING-/INDICATION PART

Lens shape:	mushroom-head
Lens material:	Plastic
Lens optics:	opaque
Lens colour:	Red
Lens illumination:	non illuminative

ELECTRICAL CHARACTERISTICS

Standards:	The switches comply with the "Standards for low-voltage switching devices" DIN EN 60947-1
-------------------	---

MECHANICAL CHARACTERISTIC

Operating Travel:	ca. 5.8 mm ± 0.2 mm
Weight:	0.044 kg
Mechanical lifetime:	≤50 000 cycles of operation
Switching action:	Maintained

Operating force: 8 N

AMBIENT CONDITION

IP Protection: IP65 front side

Operating temperature: - 40 °C ... + 55 °C

Storage temperature: - 40 °C ... + 85 °C

OTHER

Housing colour: Grey

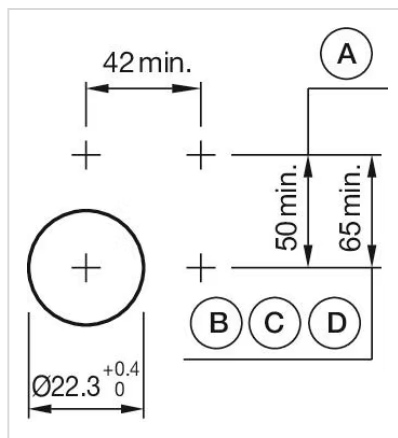
Short Description: Actuator, Ø 40 mm, mushroom-head, non illuminative, Red, Plastic, opaque, Nature, Aluminium, anodised, Maintained

Housing material: Plastic

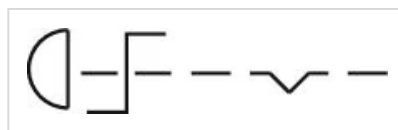
Marking: Arrows

max. number of switching elements: 3

Mounting cut-outs:



Wiring diagrams:



Dimension drawings:

