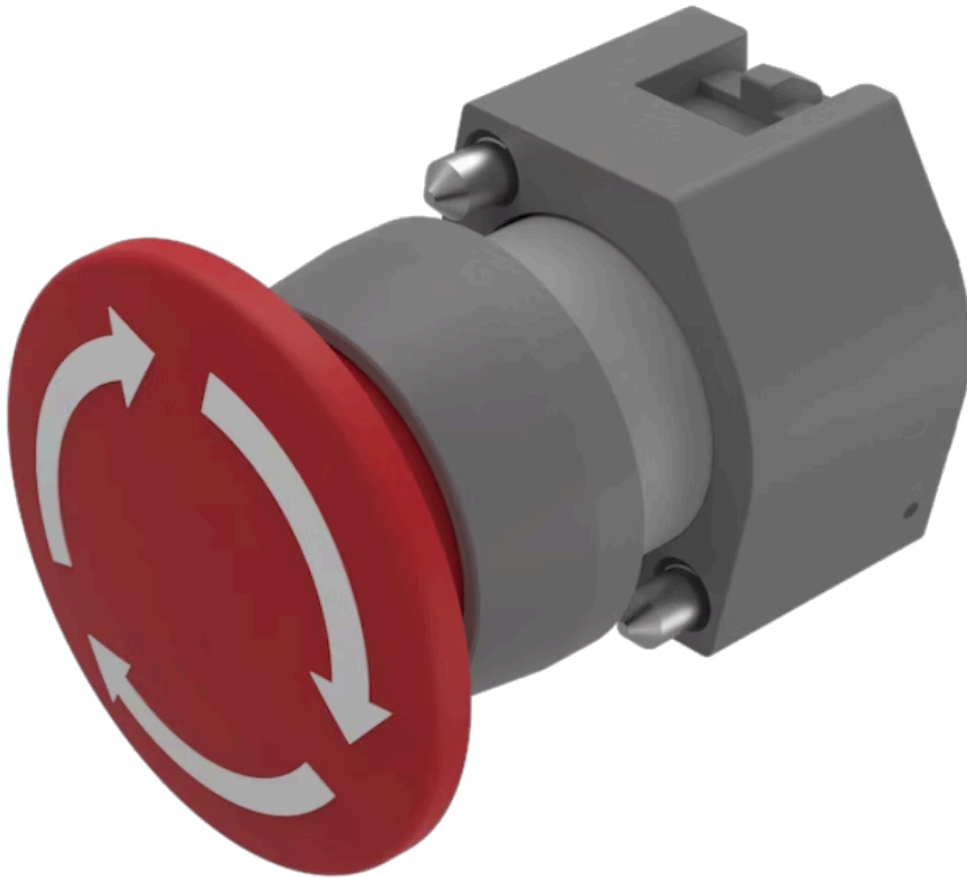


Actuator

704.074.2



<https://eao.com/p/704.074.2>

Your product:



704.074.2 Actuator

FRONT

Front bezel colour:	Grey
Front bezel material:	Plastic
Front dimension:	Ø 40 mm

MOUNTING

Design:	raised
----------------	--------

OPERATING-/INDICATION PART

Lens material:	Plastic
Lens shape:	mushroom-head
Lens illumination:	non illuminative
Lens colour:	Red
Lens optics:	opaque

ELECTRICAL CHARACTERISTICS

Standards:	The switches comply with the "Standards for low-voltage switching devices" DIN EN 60947-1
-------------------	---

MECHANICAL CHARACTERISTIC

Operating force:	8 N
Weight:	0.047 kg
Operating Travel:	ca. 5.8 mm ± 0.2 mm
Switching action:	Maintained

Mechanical lifetime: ≤50 000 cycles of operation

AMBIENT CONDITION

Operating temperature: – 40 °C ... + 55 °C

Storage temperature: – 40 °C ... + 85 °C

IP Protection: IP65 front side

OTHER

max. number of switching elements: 3

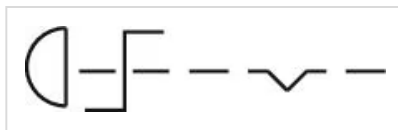
Short Description: Actuator, Ø 40 mm, mushroom-head, non illuminative, Red, Plastic, opaque, Grey, Plastic, Maintained

Housing colour: Grey

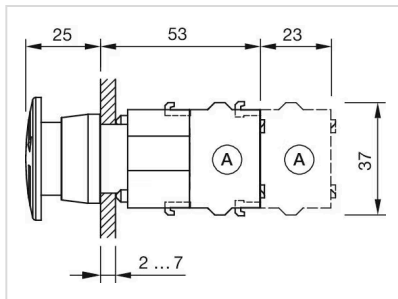
Marking: Arrows

Housing material: Plastic

Wiring diagrams:



Dimension drawings:



Mounting cut-outs:

