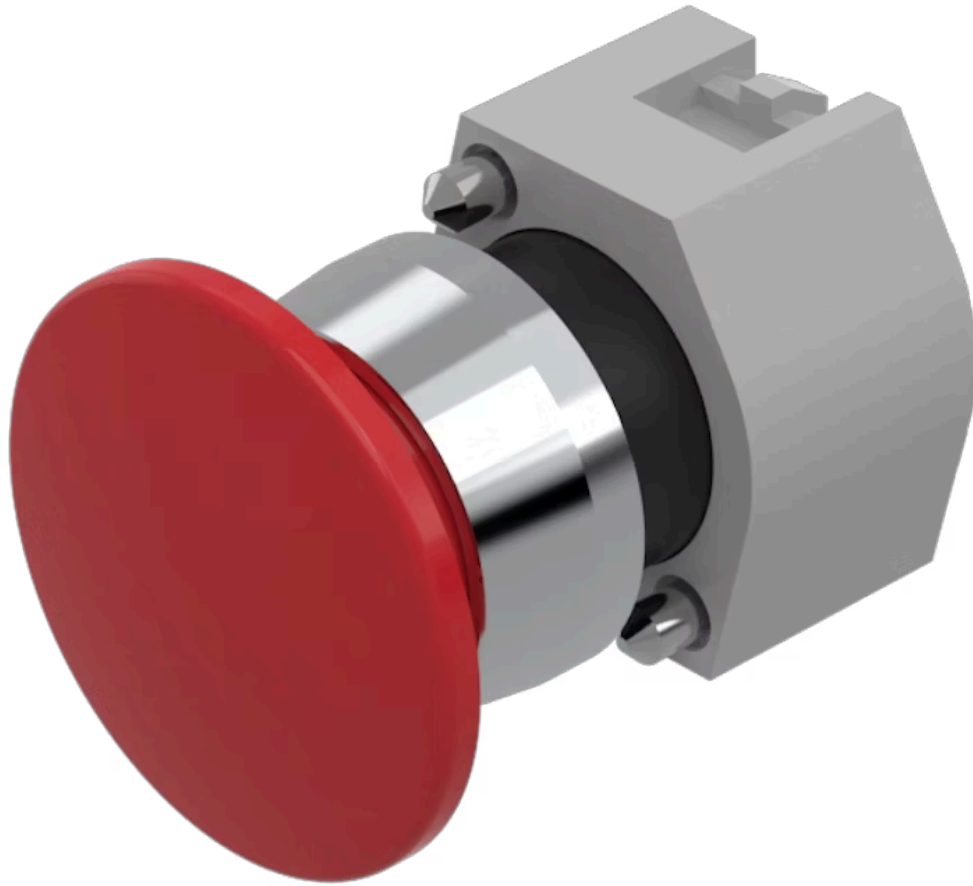


# Actuator

704.071.2



<https://eao.com/p/704.071.2>

Your product:

---



## 704.071.2 Actuator

### FRONT

<b>Front dimension:</b>	Ø 40 mm
<b>Front bezel material:</b>	Aluminium
<b>Front bezel colour:</b>	Nature

### MOUNTING

<b>Design:</b>	raised
----------------	--------

### OPERATING-/INDICATION PART

<b>Lens material:</b>	Plastic
<b>Lens shape:</b>	mushroom-head
<b>Lens colour:</b>	Red
<b>Lens illumination:</b>	non illuminative
<b>Lens optics:</b>	opaque

### MECHANICAL CHARACTERISTIC

<b>Weight:</b>	0.044 kg
<b>Switching action:</b>	Momentary
<b>Mechanical lifetime:</b>	≤3 Mio. cycles of operation

### OTHER

<b>Hints:</b>	Max. 3 switching elements can be clipped on
<b>max. number of switching elements:</b>	3

**Short Description:**

Actuator, Ø 40 mm, mushroom-head, non illuminative, Red, Plastic, opaque, with protective hood, Nature, Aluminium, anodised, Momentary

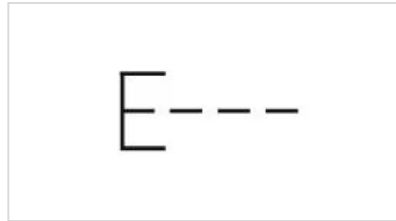
**Housing material:**

Plastic

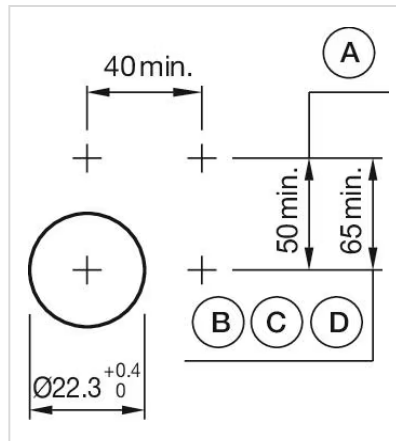
**Housing colour:**

Grey

**Wiring diagrams:**



**Mounting cut-outs:**



**Dimension drawings:**

