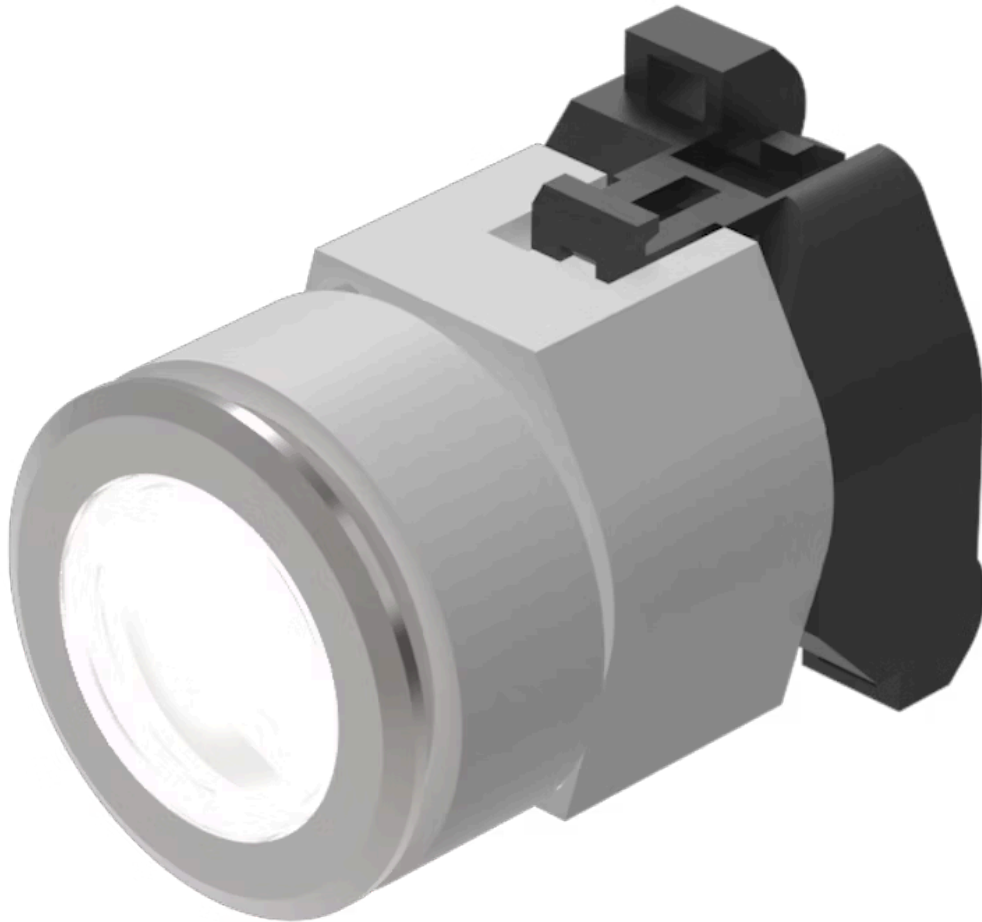


# Actuator

704.062.718



<https://eao.com/p/704.062.718>

Your product:

---



## 704.062.718 Actuator

### FRONT

<b>Front bezel colour:</b>	Nature
<b>Front dimension:</b>	Ø 35 mm
<b>Front bezel material:</b>	Aluminium
<b>Front form:</b>	round

### MOUNTING

<b>Design:</b>	flush
----------------	-------

### OPERATING-/INDICATION PART

<b>Lens colour:</b>	Colourless
<b>Lens material:</b>	Plastic
<b>Lens optics:</b>	transparent
<b>Lens shape:</b>	flush
<b>Lens illumination:</b>	illuminative

### ELECTRICAL CHARACTERISTICS

<b>Standards:</b>	The switches comply with the "Standards for low-voltage switching devices" DIN EN 60947-1
-------------------	---

### MECHANICAL CHARACTERISTIC

<b>Weight:</b>	0.067 kg
<b>Switching action:</b>	Maintained
<b>Mechanical lifetime:</b>	≤3 Mio. cycles of operation

**Terminal:** Screw terminal  
**Operating force:** 8 N  
**Operating Travel:** ca. 5.8 mm ± 0.2 mm

### AMBIENT CONDITION

**Operating temperature:** - 40 °C ... + 55 °C  
**IP Protection:** IP65 front side  
**Storage temperature:** - 40 °C ... + 85 °C

### OTHER

**Hints:** Max. 3 switching elements can be clipped on, The lamp block will be delivered with screw terminal, The colour of anodised aluminium parts can vary due to technical production reasons

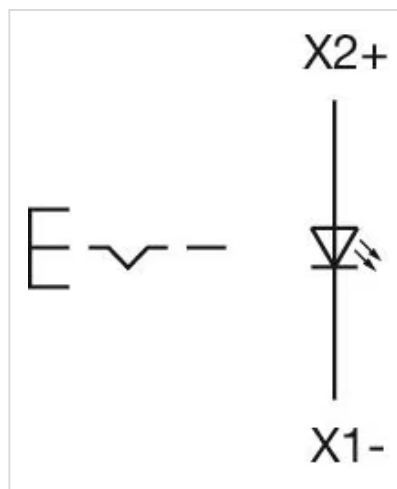
**max. number of switching elements:** 3

**Short Description:** Actuator, Ø 35 mm, flush, illuminative, Colourless, Plastic, transparent, round, Nature, Aluminium, anodised, Maintained, Screw terminal

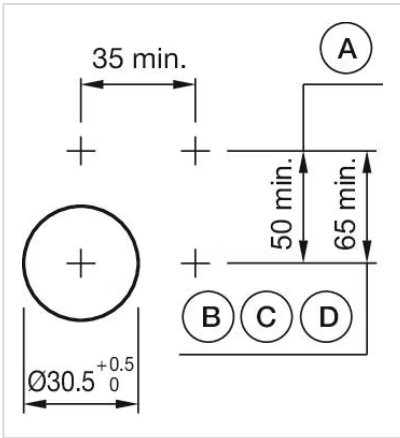
**Housing colour:** Grey

**Housing material:** Plastic

**Wiring diagrams:**



**Mounting cut-outs:**



**Dimension drawings:**

