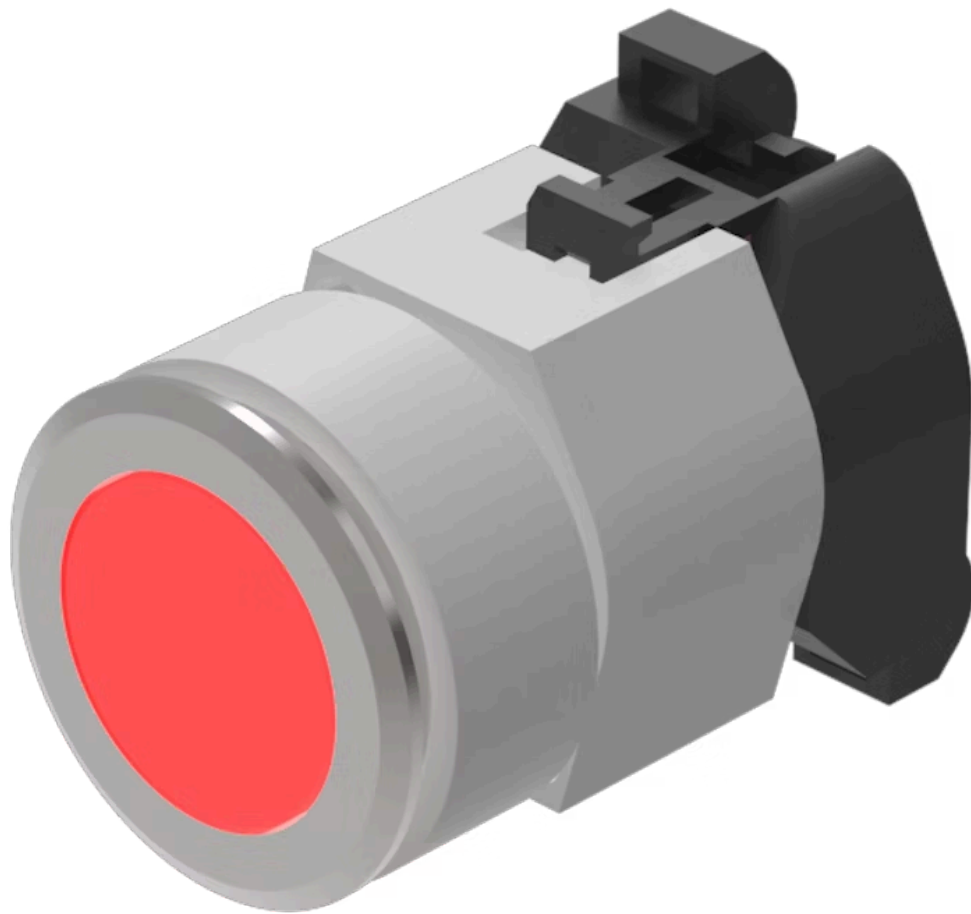


Actuator

704.062.218



<https://eao.com/p/704.062.218>

Your product:



704.062.218 Actuator

FRONT

Front dimension:	Ø 35 mm
Front bezel colour:	Nature
Front form:	round
Front bezel material:	Aluminium

MOUNTING

Design:	flush
----------------	-------

OPERATING-/INDICATION PART

Lens shape:	flush
Lens colour:	Red
Illumination colour:	Red
Lens material:	Plastic
Lens illumination:	illuminative
Lens optics:	transparent

ELECTRICAL CHARACTERISTICS

Standards:	The switches comply with the "Standards for low-voltage switching devices" DIN EN 60947-1
-------------------	---

MECHANICAL CHARACTERISTIC

Operating force:	8 N
Switching action:	Maintained

Terminal:	Screw terminal
Weight:	0.001 kg
Operating Travel:	ca. 5.8 mm ± 0.2 mm
Mechanical lifetime:	≤3 Mio. cycles of operation

AMBIENT CONDITION

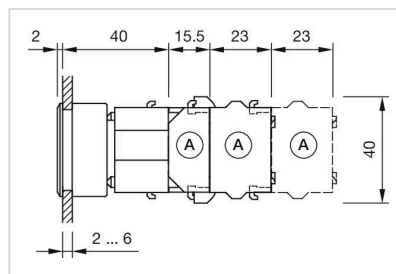
IP Protection:	IP65 front side
Storage temperature:	- 40 °C ... + 85 °C
Operating temperature:	- 40 °C ... + 55 °C

OTHER

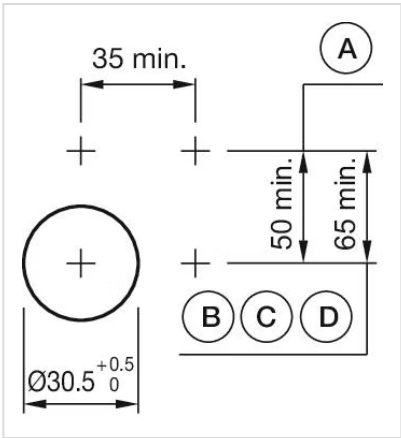
Housing material:	Plastic
Short Description:	Actuator, Ø 35 mm, flush, illuminative, Red, Plastic, transparent, round, Nature, Aluminium, anodised, Maintained, Screw terminal, Red
max. number of switching elements:	3
Housing colour:	Grey

Hints: Max. 3 switching elements can be clipped on, The lamp block will be delivered with screw terminal, The colour of anodised aluminium parts can vary due to technical production reasons

Dimension drawings:



Mounting cut-outs:



Wiring diagrams:

