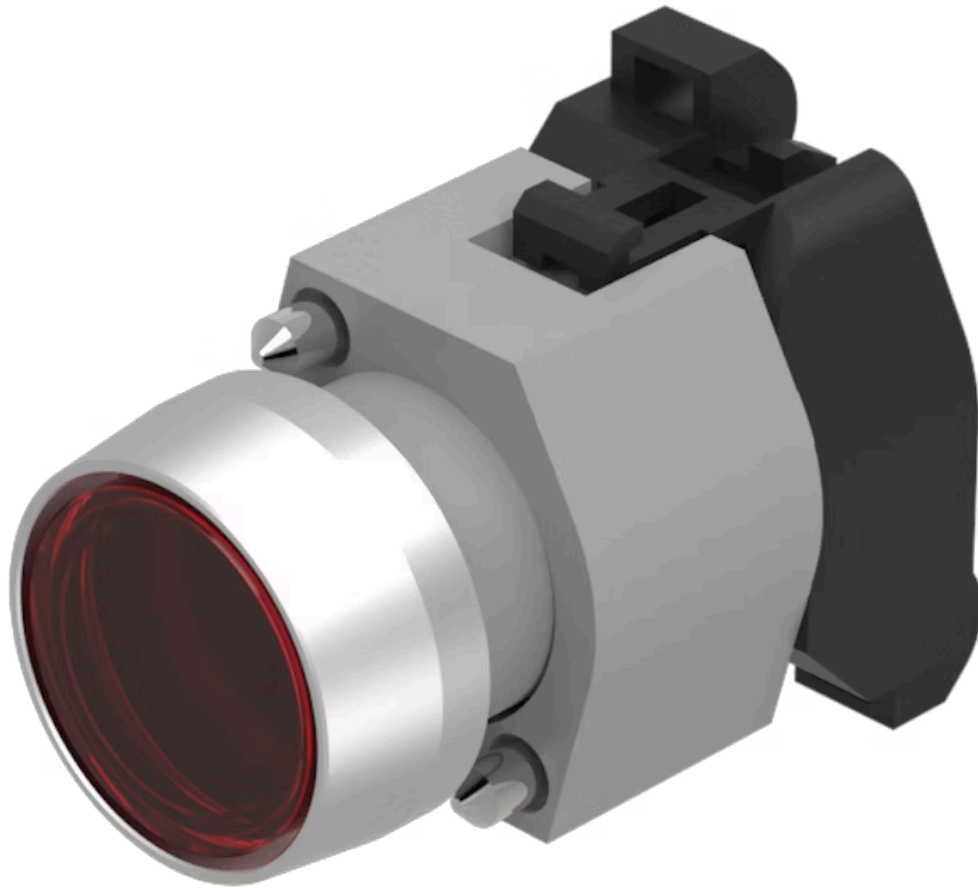


Actuator

704.062.2



<https://eao.com/p/704.062.2>

Your product:



704.062.2 Actuator

FRONT

Front bezel colour:	Nature
Front bezel material:	Aluminium
Front dimension:	Ø 29 mm
Front form:	round

MOUNTING

Design:	raised
----------------	--------

OPERATING-/INDICATION PART

Illumination colour:	Red
Lens material:	Plastic
Lens colour:	Red
Lens optics:	transparent
Lens shape:	flush
Lens illumination:	illuminative

ELECTRICAL CHARACTERISTICS

Standards:	The switches comply with the "Standards for low-voltage switching devices" DIN EN 60947-1
-------------------	---

MECHANICAL CHARACTERISTIC

Weight:	0.056 kg
Terminal:	Screw terminal

Switching action: Maintained
Operating force: 8 N
Operating Travel: ca. 5.8 mm ± 0.2 mm
Mechanical lifetime: ≤3 Mio. cycles of operation

AMBIENT CONDITION

Operating temperature: - 40 °C ... + 55 °C
Storage temperature: - 40 °C ... + 85 °C
IP Protection: IP65 front side

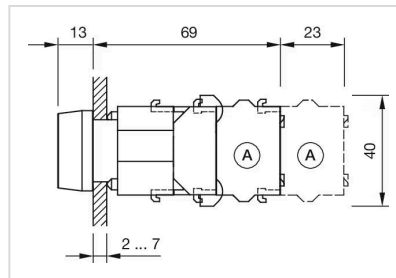
OTHER

Housing material: Plastic
max. number of switching elements: 3
Housing colour: Grey

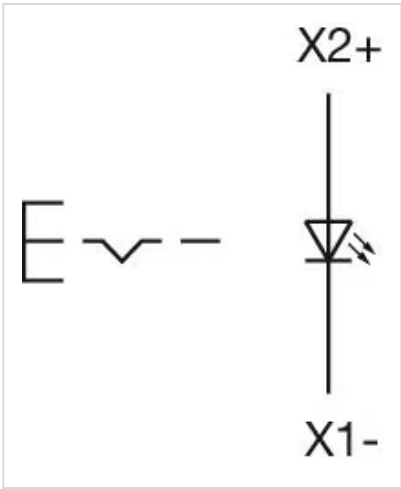
Hints: Frontring with protective cover to be mounted with a torque of 0.4 Nm onto actuator, Max. 3 switching elements can be clipped on

Short Description: Actuator, Ø 29 mm, flush, illuminative, Red, Plastic, transparent, round, Nature, Aluminium, anodised, Maintained, Screw terminal, Red

Dimension drawings:



Wiring diagrams:



Mounting cut-outs:

