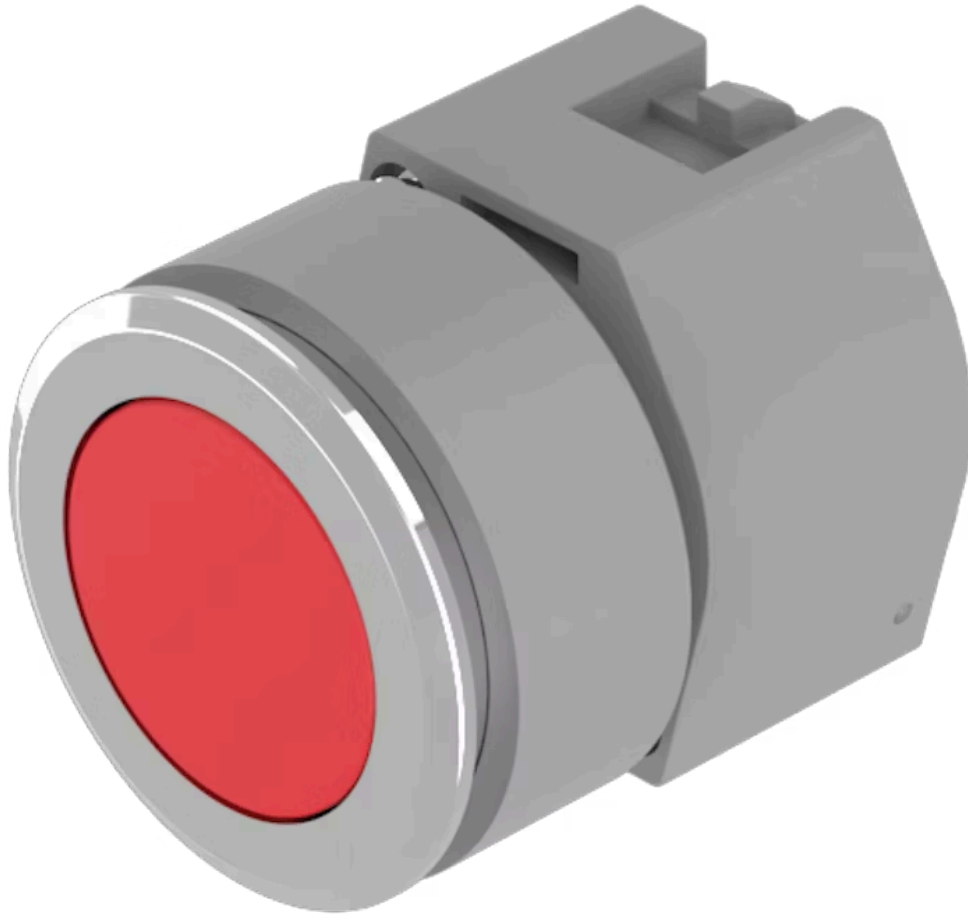


Actuator

704.042.218



<https://eao.com/p/704.042.218>

Your product:



704.042.218 Actuator

FRONT

Front bezel colour:	Nature
Front dimension:	Ø 35 mm
Front bezel material:	Aluminium
Front form:	round

MOUNTING

Design:	flush
----------------	-------

OPERATING-/INDICATION PART

Lens illumination:	non illuminative
Lens optics:	transparent
Lens shape:	flush
Lens colour:	Red
Lens material:	Plastic

ELECTRICAL CHARACTERISTICS

Standards:	The switches comply with the "Standards for low-voltage switching devices" DIN EN 60947-1
-------------------	---

MECHANICAL CHARACTERISTIC

Mechanical lifetime:	≤3 Mio. cycles of operation
Weight:	0.051 kg
Switching action:	Maintained

Operating force: 8 N

Operating Travel: ca. 5.8 mm ± 0.2 mm

AMBIENT CONDITION

Storage temperature: - 40 °C ... + 85 °C

IP Protection: IP65 front side

Operating temperature: - 40 °C ... + 55 °C

OTHER

Short Description: Actuator, Ø 35 mm, flush, non illuminative, Red, Plastic, transparent, round, Nature, Aluminium, anodised, Maintained

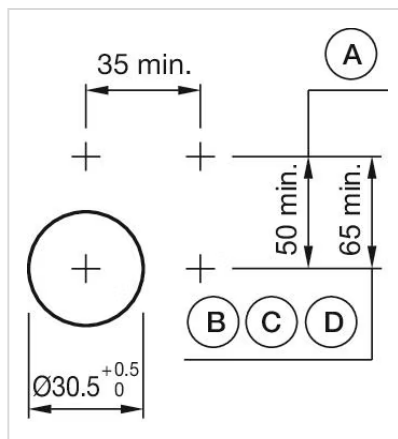
Housing material: Plastic

max. number of switching elements: 3

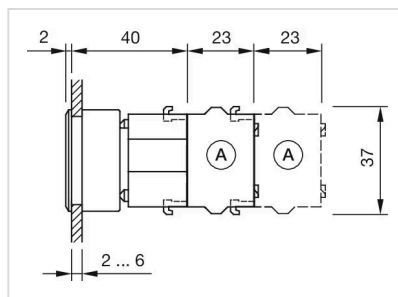
Hints: Max. 3 switching elements can be clipped on, The colour of anodised aluminium parts can vary due to technical production reasons

Housing colour: Grey

Mounting cut-outs:



Dimension drawings:



Wiring diagrams:

E-v-