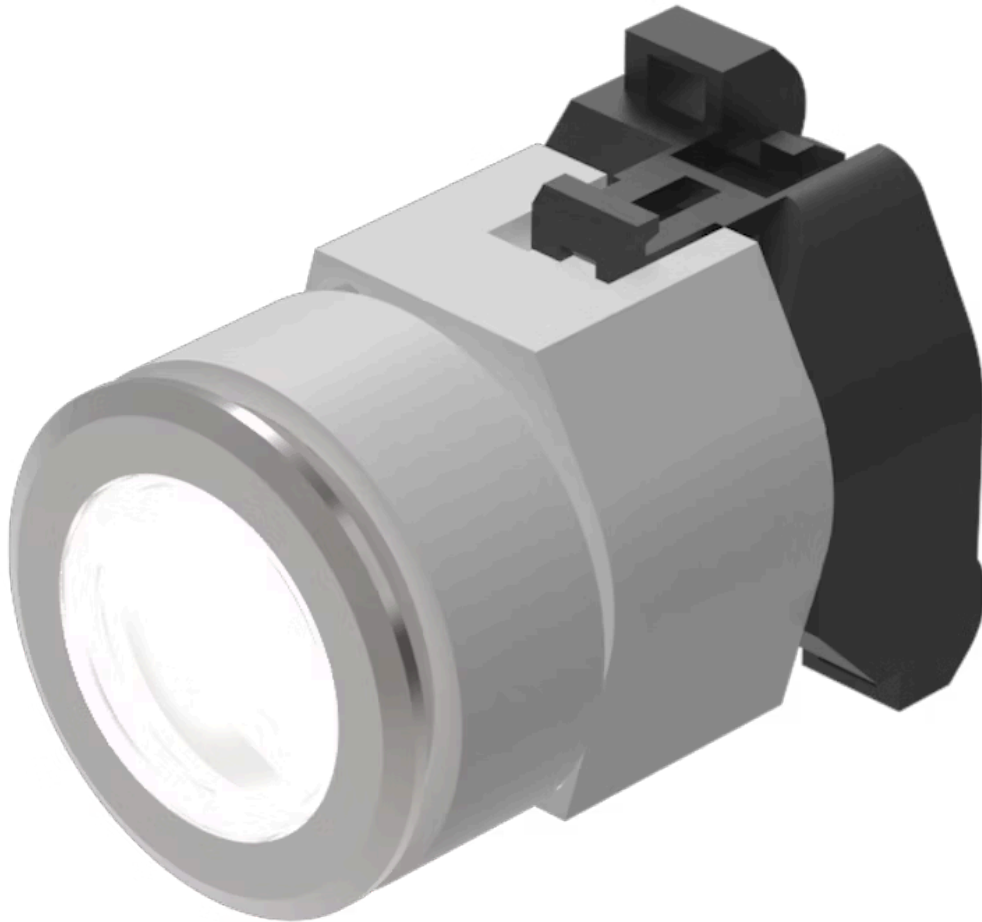


Actuator

704.032.718



<https://eao.com/p/704.032.718>

Your product:



704.032.718 Actuator

FRONT

Front dimension:	Ø 35 mm
Front bezel material:	Aluminium
Front bezel colour:	Nature
Front form:	round

MOUNTING

Design:	flush
----------------	-------

OPERATING-/INDICATION PART

Lens optics:	transparent
Lens illumination:	illuminative
Lens colour:	Colourless
Lens material:	Plastic
Lens shape:	flush

ELECTRICAL CHARACTERISTICS

Standards:	The switches comply with the "Standards for low-voltage switching devices" DIN EN 60947-1
-------------------	---

MECHANICAL CHARACTERISTIC

Terminal:	Screw terminal
Switching action:	Momentary
Weight:	0.067 kg

Operating force: 8 N

Mechanical lifetime: ≤3 Mio. cycles of operation

Operating Travel: ca. 5.8 mm ± 0.2 mm

AMBIENT CONDITION

Storage temperature: - 40 °C ... + 85 °C

Operating temperature: - 40 °C ... + 55 °C

IP Protection: IP65 front side

OTHER

max. number of switching elements: 3

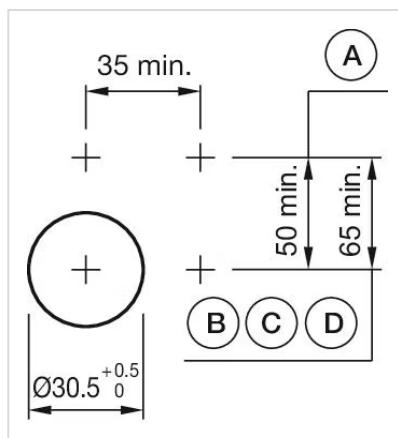
Housing colour: Grey

Housing material: Plastic

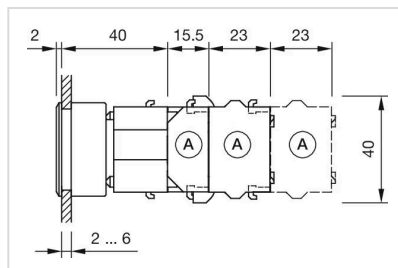
Hints: Max. 3 switching elements can be clipped on, The lamp block will be delivered with screw terminal, The colour of anodised aluminium parts can vary due to technical production reasons

Short Description: Actuator, Ø 35 mm, flush, illuminative, Colourless, Plastic, transparent, round, Nature, Aluminium, anodised, Momentary, Screw terminal

Mounting cut-outs:



Dimension drawings:



Wiring diagrams:

