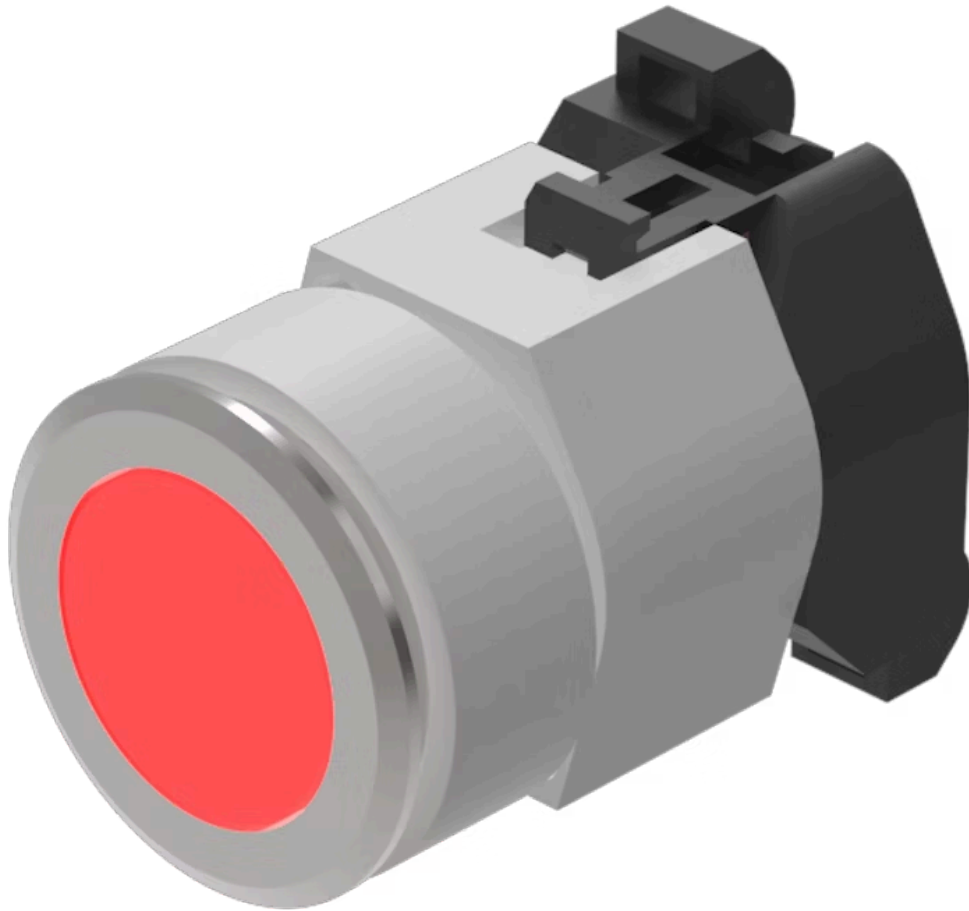


Actuator

704.032.218



<https://eao.com/p/704.032.218>

Your product:



704.032.218 Actuator

FRONT

Front form:	round
Front dimension:	Ø 35 mm
Front bezel colour:	Nature
Front bezel material:	Aluminium

MOUNTING

Design:	flush
----------------	-------

OPERATING-/INDICATION PART

Lens colour:	Red
Lens material:	Plastic
Lens shape:	flush
Lens illumination:	illuminative
Lens optics:	transparent
Illumination colour:	Red

ELECTRICAL CHARACTERISTICS

Standards:	The switches comply with the "Standards for low-voltage switching devices" DIN EN 60947-1
-------------------	---

MECHANICAL CHARACTERISTIC

Switching action:	Momentary
Weight:	0.067 kg

Terminal:	Screw terminal
Operating Travel:	ca. 5.8 mm ± 0.2 mm
Mechanical lifetime:	≤3 Mio. cycles of operation
Operating force:	8 N

AMBIENT CONDITION

Storage temperature:	- 40 °C ... + 85 °C
Operating temperature:	- 40 °C ... + 55 °C
IP Protection:	IP65 front side

OTHER

Hints: Max. 3 switching elements can be clipped on, The lamp block will be delivered with screw terminal, The colour of anodised aluminium parts can vary due to technical production reasons

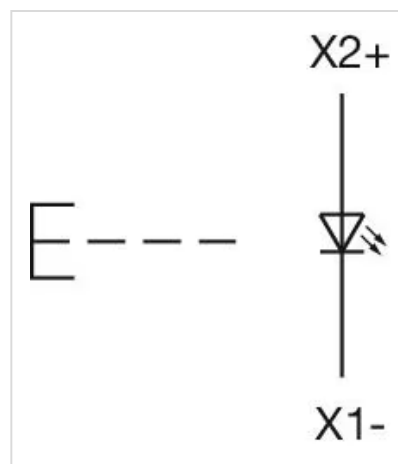
max. number of switching elements: 3

Housing colour: Grey

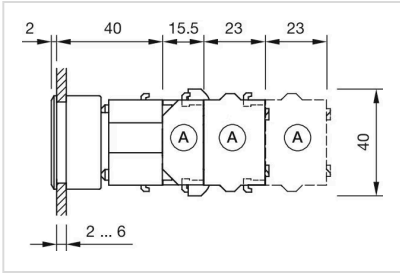
Short Description: Actuator, Ø 35 mm, flush, illuminative, Red, Plastic, transparent, round, Nature, Aluminium, anodised, Momentary, Screw terminal, Red

Housing material: Plastic

Wiring diagrams:



Dimension drawings:



Mounting cut-outs:

