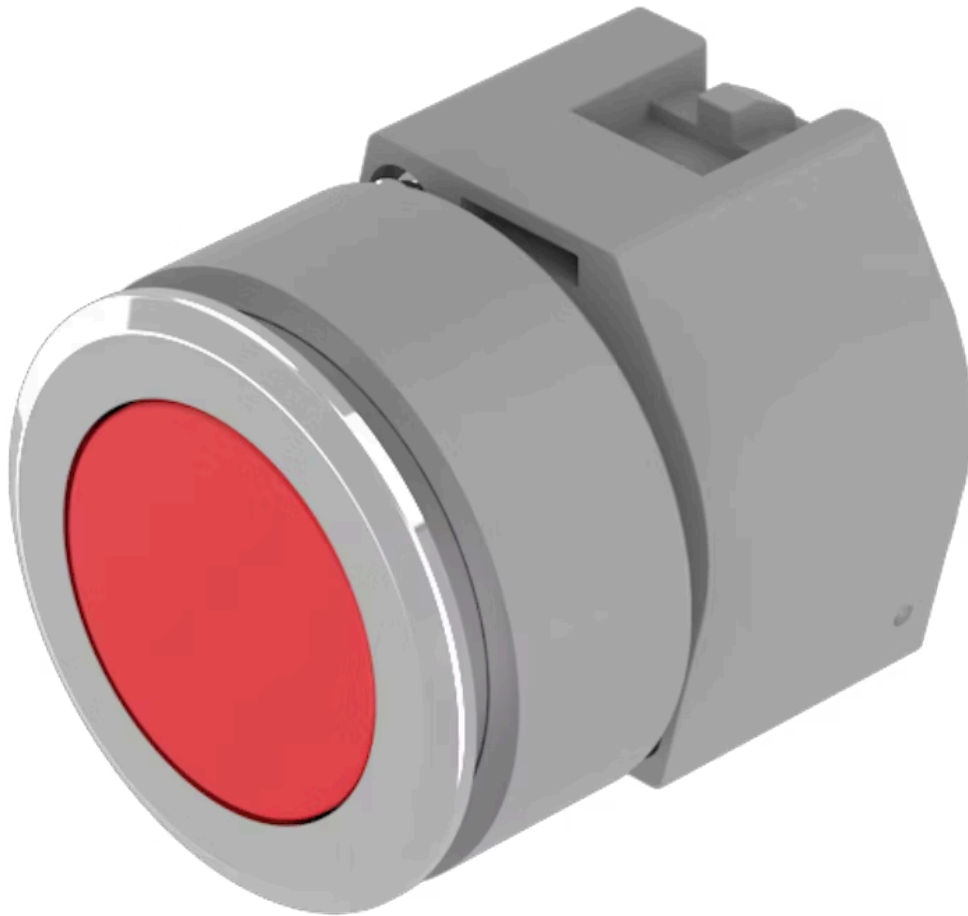


Actuator

704.012.218



<https://eao.com/p/704.012.218>

Your product:



704.012.218 Actuator

FRONT

Front bezel colour:	Nature
Front form:	round
Front bezel material:	Aluminium
Front dimension:	Ø 35 mm

MOUNTING

Design:	flush
----------------	-------

OPERATING-/INDICATION PART

Lens shape:	flush
Lens material:	Plastic
Lens colour:	Red
Lens optics:	transparent
Lens illumination:	non illuminative

ELECTRICAL CHARACTERISTICS

Standards:	The switches comply with the "Standards for low-voltage switching devices" DIN EN 60947-1
-------------------	---

MECHANICAL CHARACTERISTIC

Operating force:	8 N
Switching action:	Momentary
Weight:	0.051 kg

Mechanical lifetime: ≤3 Mio. cycles of operation

Operating Travel: ca. 5.8 mm ± 0.2 mm

AMBIENT CONDITION

Storage temperature: - 40 °C ... + 85 °C

Operating temperature: - 40 °C ... + 55 °C

IP Protection: IP65 front side

OTHER

Housing material: Plastic

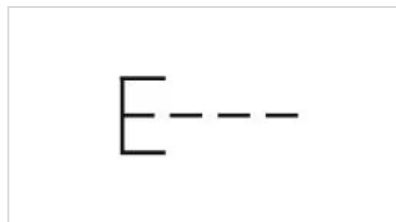
Housing colour: Grey

Short Description: Actuator, Ø 35 mm, flush, non illuminative, Red, Plastic, transparent, round, Nature, Aluminium, anodised, Momentary

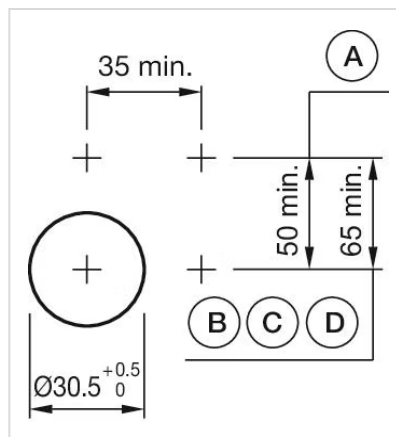
Hints: Max. 3 switching elements can be clipped on, The colour of anodised aluminium parts can vary due to technical production reasons

max. number of switching elements: 3

Wiring diagrams:



Mounting cut-outs:



Dimension drawings:

