



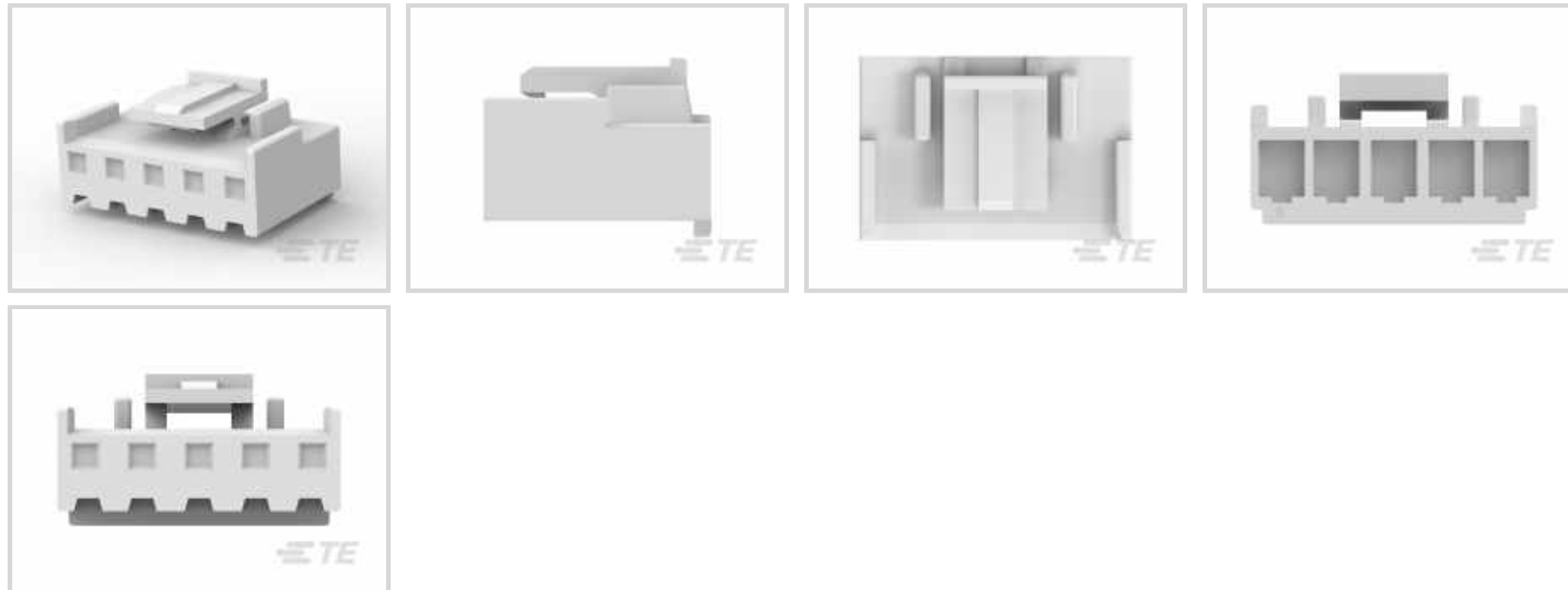
Economy Power

TE Internal #: 7-1123722-5

Economy Power, Rectangular Power Connectors, Housing, Plug, Wire-to-Board, 5 Position, 3.96mm [.156in] Centerline, Wire & Cable, UL 94V-2

[View on TE.com >](#)

Connectors > Power Connectors > Rectangular Power > Rectangular Power Connectors



Rectangular Power Connector Type: **Housing**

Connector & Housing Type: **Plug**

Connector System: **Wire-to-Board**

Number of Positions: **5**

Centerline (Pitch): **3.96 mm [.156 in]**

Features

Product Type Features

Rectangular Power Connector Type	Housing
Connector & Housing Type	Plug
Connector System	Wire-to-Board
Sealable	No
Connector & Contact Terminates To	Wire & Cable

Configuration Features

Number of Positions	5
Number of Rows	1

Electrical Characteristics

Dielectric Withstanding Voltage (Max)	1500 VAC
Operating Voltage	250 VDC
Insulation Resistance	1000 MΩ

Contact Features

Contact Layout	Inline
----------------	--------



Contact Current Rating (Max)	8 A
Contact Retention Within Housing	Without
Contact Type	Socket

Termination Features

Termination Method to Wire & Cable	Crimp
------------------------------------	-------

Mechanical Attachment

Strain Relief	Without
Mating Alignment	Without
Connector Mounting Type	Board Mount
Mating Retention	With
Mating Retention Type	Latch, Locking Latch

Housing Features

Centerline (Pitch)	3.96 mm [.156 in]
Housing Color	Natural
Housing Material	Nylon 66

Dimensions

Width	13.3 mm [.524 in]
Accepts Wire Insulation Diameter Range	1.7 – 3 mm [.067 – .118 in]
Height	10.5 mm [.413 in]
Length	7.86 mm [.3094 in]

Usage Conditions

Operating Temperature Range	-25 – 105 °C [-13 – 221 °F]
-----------------------------	-----------------------------

Operation/Application

Circuit Application	Power & Signal
---------------------	----------------

Industry Standards

UL Flammability Rating	UL 94V-2
Glow Wire Rating	GWT 750°C (Without Flame)

Packaging Features

Packaging Method	Bag
Packaging Quantity	1600

Product Compliance

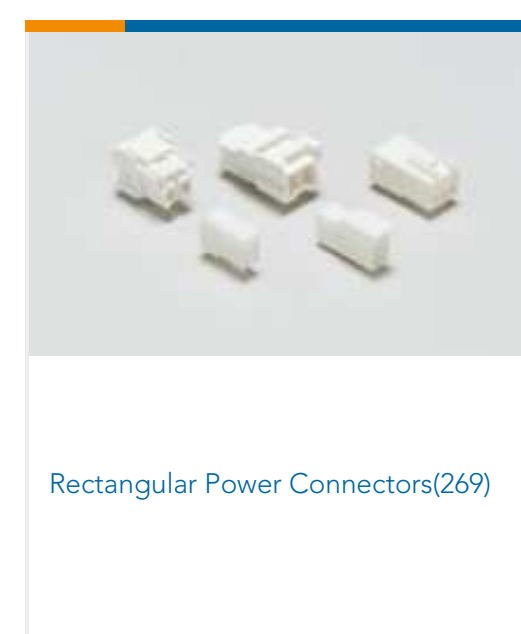
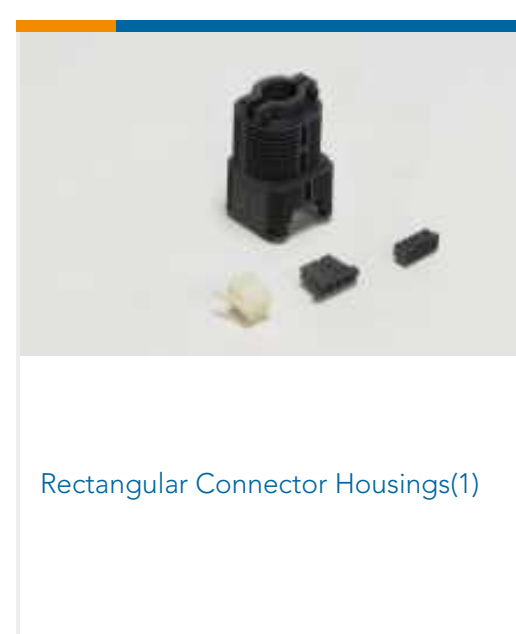
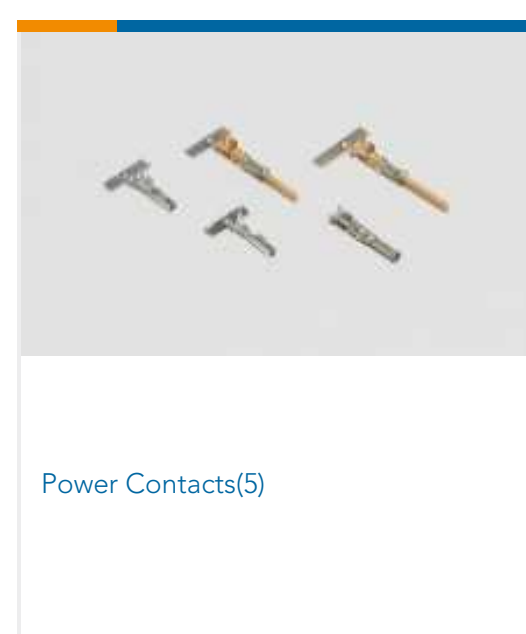
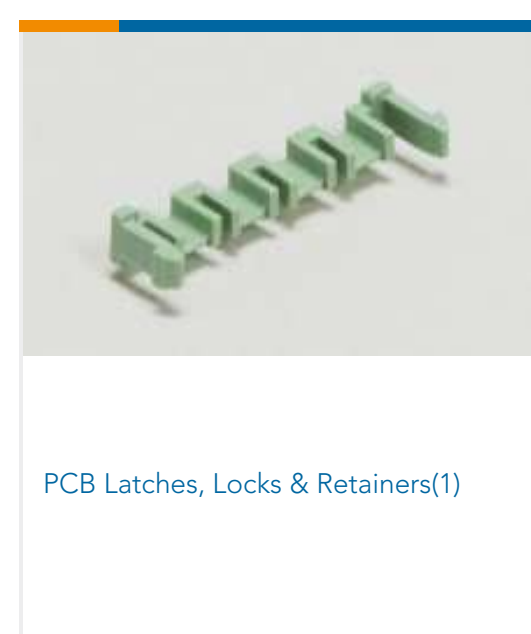
[For compliance documentation, visit the product page on TE.com>](#)

EU RoHS Directive 2011/65/EU	Compliant
EU ELV Directive 2000/53/EC	Compliant
China RoHS 2 Directive MIIT Order No 32, 2016	No Restricted Materials Above Threshold
EU REACH Regulation (EC) No. 1907/2006	Current ECHA Candidate List: JAN 2020 (205) Candidate List Declared Against: JAN 2020 (205) Does not contain REACH SVHC
EU REACH Regulation (EC) No. 1907/2006	Current ECHA Candidate List: JAN 2020 (205) Candidate List Declared Against: JAN 2020 (205)
Halogen Content	Not Low Halogen - contains Br or Cl > 900 ppm.
Solder Process Capability	Not reviewed for solder process capability

Product Compliance Disclaimer

This information is provided based on reasonable inquiry of our suppliers and represents our current actual knowledge based on the information they provided. This information is subject to change. The part numbers that TE has identified as EU RoHS compliant have a maximum concentration of 0.1% by weight in homogenous materials for lead, hexavalent chromium, mercury, PBB, PBDE, DBP, BBP, DEHP, DIBP, and 0.01% for cadmium, or qualify for an exemption to these limits as defined in the Annexes of Directive 2011/65/EU (RoHS2). Finished electrical and electronic equipment products will be CE marked as required by Directive 2011/65/EU. Components may not be CE marked. Additionally, the part numbers that TE has identified as EU ELV compliant have a maximum concentration of 0.1% by weight in homogenous materials for lead, hexavalent chromium, and mercury, and 0.01% for cadmium, or qualify for an exemption to these limits as defined in the Annexes of Directive 2000/53/EC (ELV). Regarding the REACH Regulations, TE's information on SVHC in articles for this part number is still based on the European Chemical Agency (ECHA) 'Guidance on requirements for substances in articles' (Version: 2, April 2011), applying the 0.1% weight on weight concentration threshold at the finished product level. TE is aware of the European Court of Justice ruling of September 10th, 2015 also known as O5A (Once An Article Always An Article) stating that, in case of 'complex object', the threshold for a SVHC must be applied to both the product as a whole and simultaneously to each of the articles forming part of its composition. TE has evaluated this ruling based on the new ECHA "Guidance on requirements for substances in articles" (June 2017, version 4.0) and will be updating its statements accordingly.

Also in the Series | Economy Power





Wire-to-Board Connector Assemblies & Housings(41)

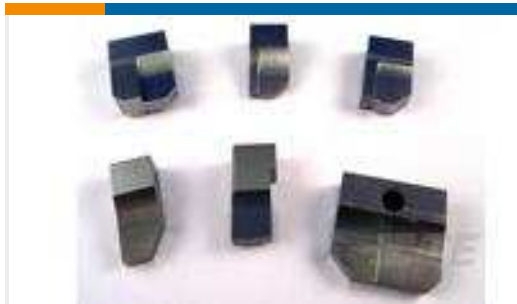
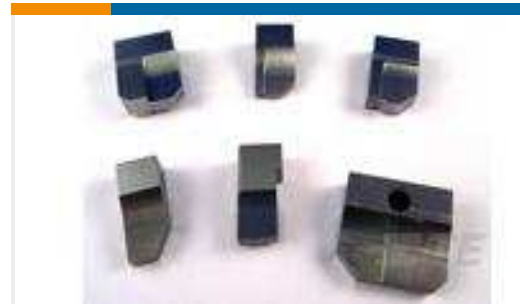
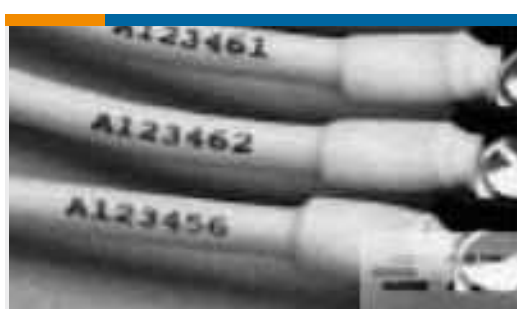


Wire-to-Board Connector Contacts(6)



Wire-to-Board Headers & Receptacles (170)

Customers Also Bought

TE Model / Part #856265-2
ANVIL, COMBINATIONTE Model / Part #1-454766-7
ANVIL, INSULATIONTE Model / Part #1855653-1
U.POD .187 SAPR 110F190FTE Model / Part #2150257-2
OCEAN_2.0_APPLICATOR-E-100F180FATE Model / Part #456430-3
CRIMPER, WIRE .210 "F"TE Model / Part #680176-1
HDM 5EAPR090F140FTGTE Model / Part #7-1123722-8
3.96 EP PLUG HSG 8P(NATURAL)TE Model / Part #152753-000
DWP-125-1/8-0-2INTE Model / Part #CZ8951-000
RNF-100-1-BK-1.25IN

Documents

Product Drawings

[3.96 EP PLUG HSG 5P\(NATURAL\)](#)

English

CAD Files

[3D PDF](#)

3D

[Customer View Model](#)

[ENG_CVM_CVM_7-1123722-5_M.2d_dxf.zip](#)



English

Customer View Model

[ENG_CVM_CVM_7-1123722-5_M.3d_igs.zip](#)

English

Customer View Model

[ENG_CVM_CVM_7-1123722-5_M.3d_stp.zip](#)

English

By downloading the CAD file I accept and agree to the [Terms and Conditions](#) of use.

Agency Approvals

[UL Report](#)

English