

SR Series

AC Connectors



UL Recognized
CSA Certified
VDE Approved
SEV Approved
SEMKO Approved†



6ESRM-P



6ESRM-3



6ESRMC2

SR Series

The SR series includes a full line of popular AC receptacles. These male and female power line connectors include snap-in and flange mounted models. All have complete safety agency approvals for worldwide usage.

Specifications

Operating voltages:	125, 250 VAC
Materials:	
Insulator:	Thermoplastic (UL V-2 flame class)
Prongs:	Solid brass, nickel plated
Terminals:	Brass, tin plated
Power connector:	Appliance inlet according to CEE 22/VI (XIV), IEC 320/VI, DIN 49457/1, SEV Type 113, SNV 24573
Temperature rating:	For "cold" connections, 65° C

AC Connectors

Part Number	Current Rating @ UL/CSA	Current Rating @ VDE	Input Configuration	Output Terminals		Mounting	
				Style	Terminal Dimensions (in./mm)	Style	Panel Thickness (in./mm)♦
6ESRM-P	15	10	Male	PC Terminals	Fit .063/1.6 Hole	Flange	-
6ESRM-3	15	10	Male	Quick Disconnect	.25 x .032/ 6.3 x 0.8	Flange	-
6ESRMC2	15	10	Male	Quick Disconnect	.187 x .032/ 4.8 x 0.8	Snap-in	.059/1.5
6ESRFC3	15*	10	Female	Quick Disconnect	.25 x .032/ 6.3 x 0.8	Snap-in	.059/1.5
6ESRF-3	15*	10	Female	Quick Disconnect	.25 x .032/ 6.3 x 0.8	Flange	-

* UL recognized and CSA certified for 15 amps at 125V. VDE approved for 10 amps at 250V.

♦ Panel thickness tolerance is $\pm .004"$ ($\pm .10mm$).

Consult your local Corcom sales representative for pricing.



6ESRFC3



6ESRF-3

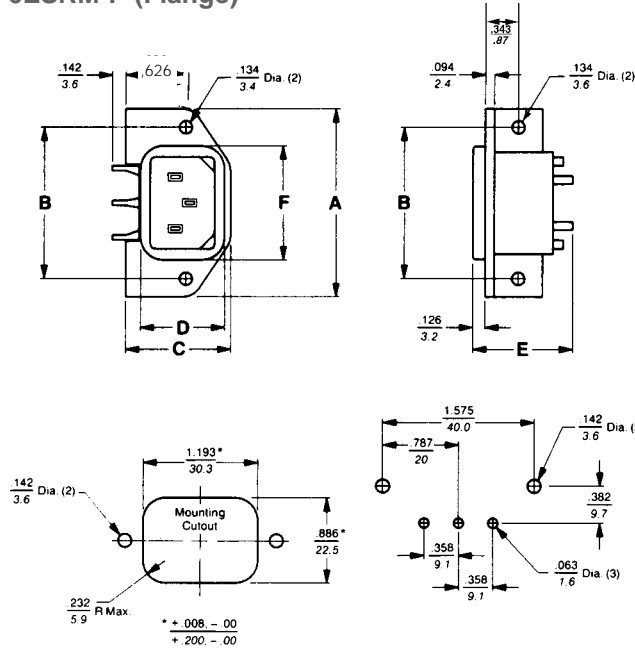
†Except 6ESRF-3 and 6ESRFC3 models.

Series SR

Case Styles

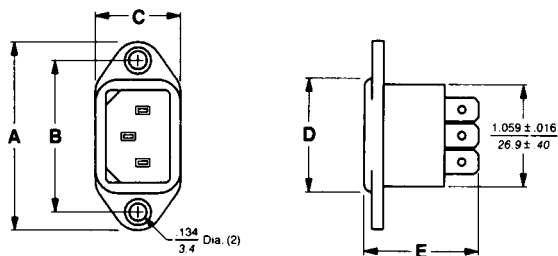
Metric shown in italics.

6ESRM-P (Flange)



Rear mount

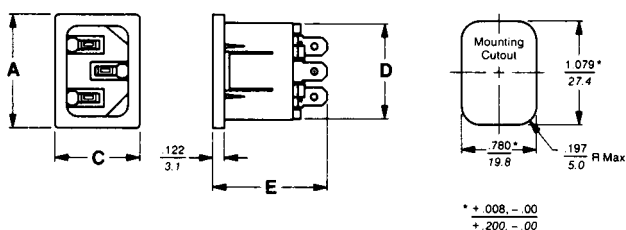
6ESRM-3 (Flange)



Rear mount

Front mount

6ESRMC2 (Snap-in)



Front mount

Case Dimensions

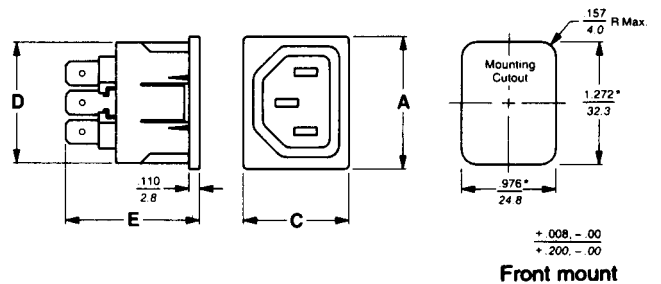
Metric shown in italics.

Part No.	A (max)	B ± 0.017 - ± 0.006 (max)	C (max)	D (max)	E (max)	F (max)
6ESRM-P	1.969 50.0	1.575 40.0	1.11 28.2	0.88 22.4	1.051 26.7	1.192 30.28
6ESRM-3	1.977 50.2	1.575 40.0	0.896 22.8	1.187 30.1	1.224 31.09	—
6ESRMC2	1.197 30.4	—	0.892 22.7	1.078 27.4	1.205 30.6	—
6ESRFC3	1.39 35.3	—	1.11 28.2	1.258 31.95	1.406 35.7	—
6ESRF-3	1.969 50.0	1.575 40.0	1.154 29.3	1.258 31.95	1.406 35.6	—

Case Styles

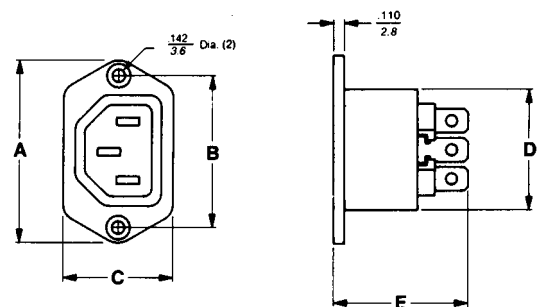
Metric shown in italics.

6ESRFC3 (Snap-in)



Front mount

6ESRF-3 (Flange)



Front mount only