

696391-1 ✓ ACTIVE

[AMPOWER](#) | [AMPOWER](#)

TE Internal #: 696391-1

AMPOWER, Rings & Spades, Rectangular Tongue, 100 – 125mm²

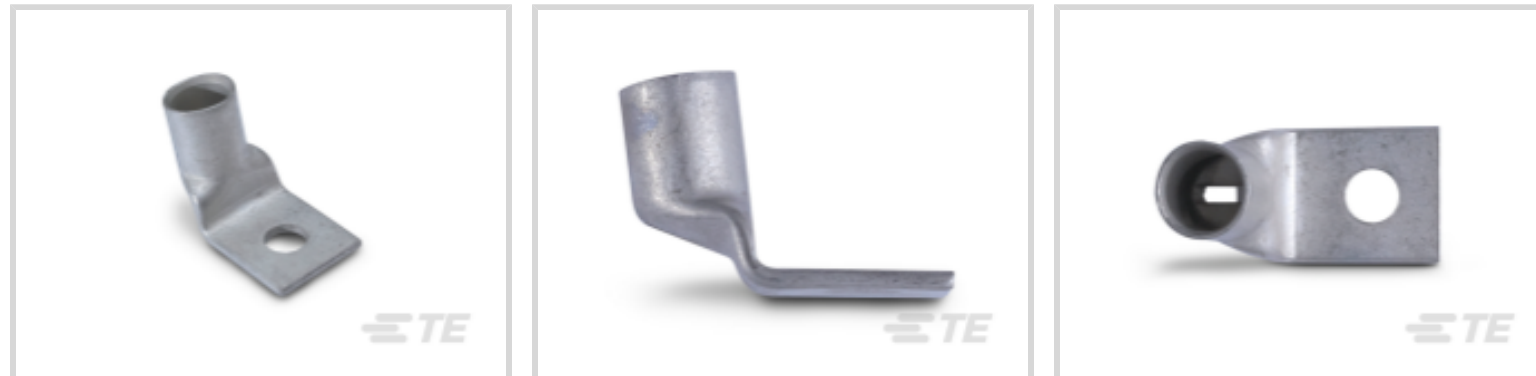
Wire Size, 190000 – 231000CMA Wire Size, M12 / 1/2, Stud

Diameter 13.08 mm [.515 in]

[View on TE.com >](#)



Terminals & Splices > Rings & Spades > AMPOWER TERMINAL 90 BENT



Terminal & Splice Type: **Rectangular Tongue**

Wire Size: **190000 – 231000 CMA**

Stud Size: **1/2, M12**

Stud Diameter: **13.08 mm [.515 in]**

[All AMPOWER TERMINAL 90 BENT \(7\)](#)

Features

Product Type Features

Terminal Features	Sheared
Stud Size	1/2, M12
Barrel Type	Closed Barrel
Sealable	No
Insulated	No
Wire/Cable Type	Copper
Support Style	Insulation Support

Configuration Features

Number of Holes	1
Terminal Angle	90°

Body Features

Inspection Slot	Yes
Weight per Piece	69.853 g
Plating Material	Tin

Contact Features

Terminal & Splice Type	Rectangular Tongue
------------------------	--------------------



Terminal Orientation	Flag
----------------------	------

Mechanical Attachment

Wire Insulation Support	Without
-------------------------	---------

Dimensions

Wire Size	190000 – 231000 CMA
-----------	---------------------

Stud Diameter	13.08 mm [.515 in]
---------------	--------------------

Tongue Thickness	4.06 mm [.16 in]
------------------	------------------

Overall Length	41.15 mm [1.62 in]
----------------	--------------------

	.185 – .273 in
--	----------------

Usage Conditions

Operating Temperature Range	-55 – 105 °C [-67 – 221 °F]
-----------------------------	-----------------------------

Operation/Application

Heavy Duty	No
------------	----

Industry Standards

Government Qualified	No
----------------------	----

Packaging Features

Packaging Quantity	25
--------------------	----

Packaging Method	Box
------------------	-----

Other

Comment	Electrodeposited Tin Plate per MIL-T-10727.
---------	---

Product Compliance

[For compliance documentation, visit the product page on TE.com>](#)

EU RoHS Directive 2011/65/EU	Compliant
------------------------------	-----------

EU ELV Directive 2000/53/EC	Compliant
-----------------------------	-----------

China RoHS 2 Directive MIIT Order No 32, 2016	No Restricted Materials Above Threshold
---	---

EU REACH Regulation (EC) No. 1907/2006	Current ECHA Candidate List: JUN 2020 (209) Candidate List Declared Against: JUL 2019 (201) Does not contain REACH SVHC
--	---

Halogen Content	Low Halogen - Br, Cl, F, I < 900 ppm per homogenous material. Also BFR/CFR/PVC Free
-----------------	---

Solder Process Capability

Not applicable for solder process capability

Product Compliance Disclaimer

This information is provided based on reasonable inquiry of our suppliers and represents our current actual knowledge based on the information they provided. This information is subject to change. The part numbers that TE has identified as EU RoHS compliant have a maximum concentration of 0.1% by weight in homogenous materials for lead, hexavalent chromium, mercury, PBB, PBDE, DBP, BBP, DEHP, DIBP, and 0.01% for cadmium, or qualify for an exemption to these limits as defined in the Annexes of Directive 2011/65/EU (RoHS2). Finished electrical and electronic equipment products will be CE marked as required by Directive 2011/65/EU. Components may not be CE marked. Additionally, the part numbers that TE has identified as EU ELV compliant have a maximum concentration of 0.1% by weight in homogenous materials for lead, hexavalent chromium, and mercury, and 0.01% for cadmium, or qualify for an exemption to these limits as defined in the Annexes of Directive 2000/53/EC (ELV). Regarding the REACH Regulation, the information TE provides on SVHC in articles for this part number is based on the latest European Chemicals Agency (ECHA) 'Guidance on requirements for substances in articles' posted at this URL: <https://echa.europa.eu/guidance-documents/guidance-on-reach>

Compatible Parts



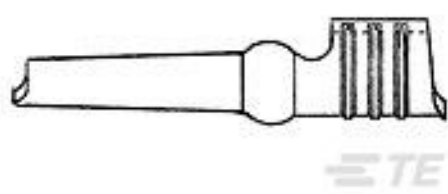
TE Model / Part # 46752-2
HYP8 AMPOWER 300MCM DIE SET

Also in the Series | AMPOWER

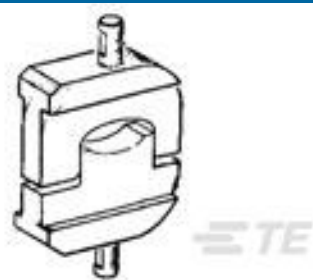


Rings & Spades(140)

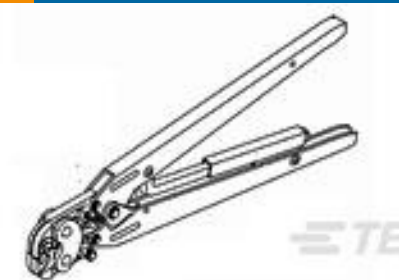
Customers Also Bought



TE Model / Part #42107-2
TAPER PIN,ON STRIP,TIN-L;88SER



TE Model / Part #46751-2
HYP8 AMPOWER 250MCM DIE SET



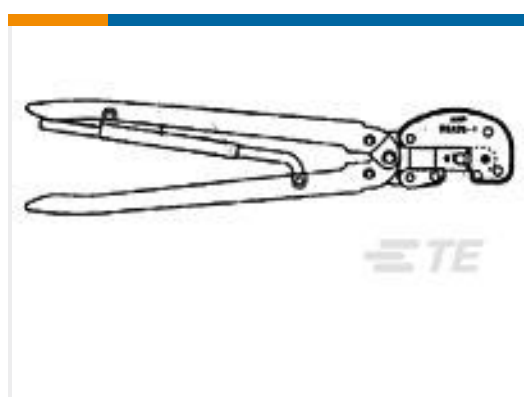
TE Model / Part #47689
DAHT F CRIMP 14-12



TE Model / Part #321163
TERMINAL,SOLIS R 4/0 1/2



TE Model / Part #CW8337-000
THX-24C112-811-0



TE Model / Part #90246-1
HHHT PIDG FASTON 14-12



TE Model / Part #CR0181-000
CWT-11-W116-9

Documents

Product Drawings

[AMPOWER 300MCM 1/2 TIN 90](#)

English

Product Specifications

[Product Specification](#)

English

[AMPOWER* Terminals & Splices, Small](#)

English