

690476-1 Δ APPLY PART NUMBER PER PROCESS SPEC. 106-2 PARA. 3.3-A OR B IN AREA X

Δ ALT MATL: 100-224 TOOL STL, 100-138 ALY STL, OR NAK 55

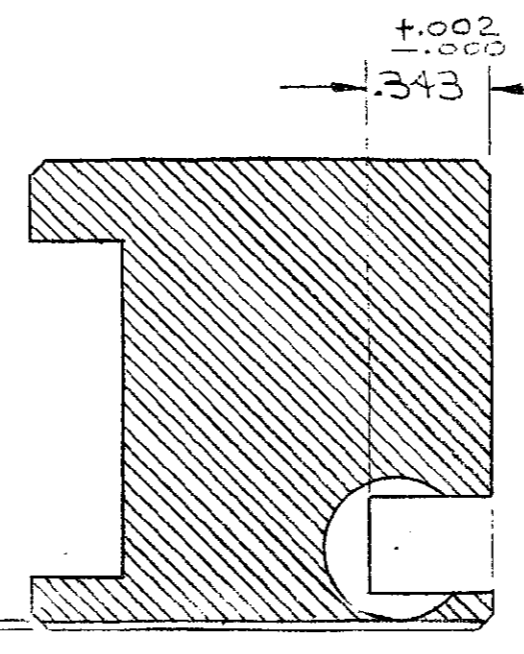
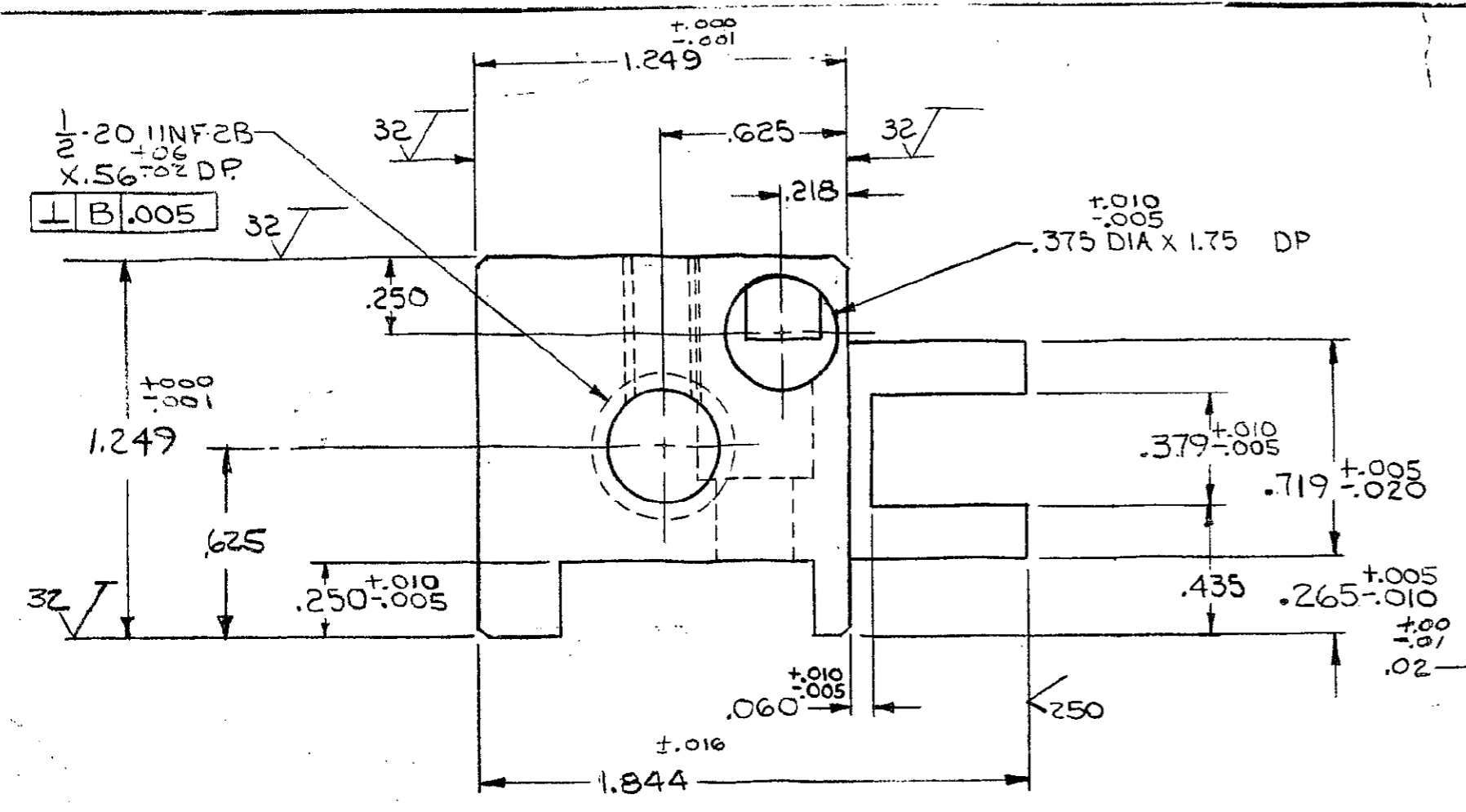
Δ INSTALL .062 DIA X .25 ROLL PIN, NOT TO EXTEND OVER .050 \pm .005 ABOVE SURFACE

3. ALL CORNER RADII .015 MAX

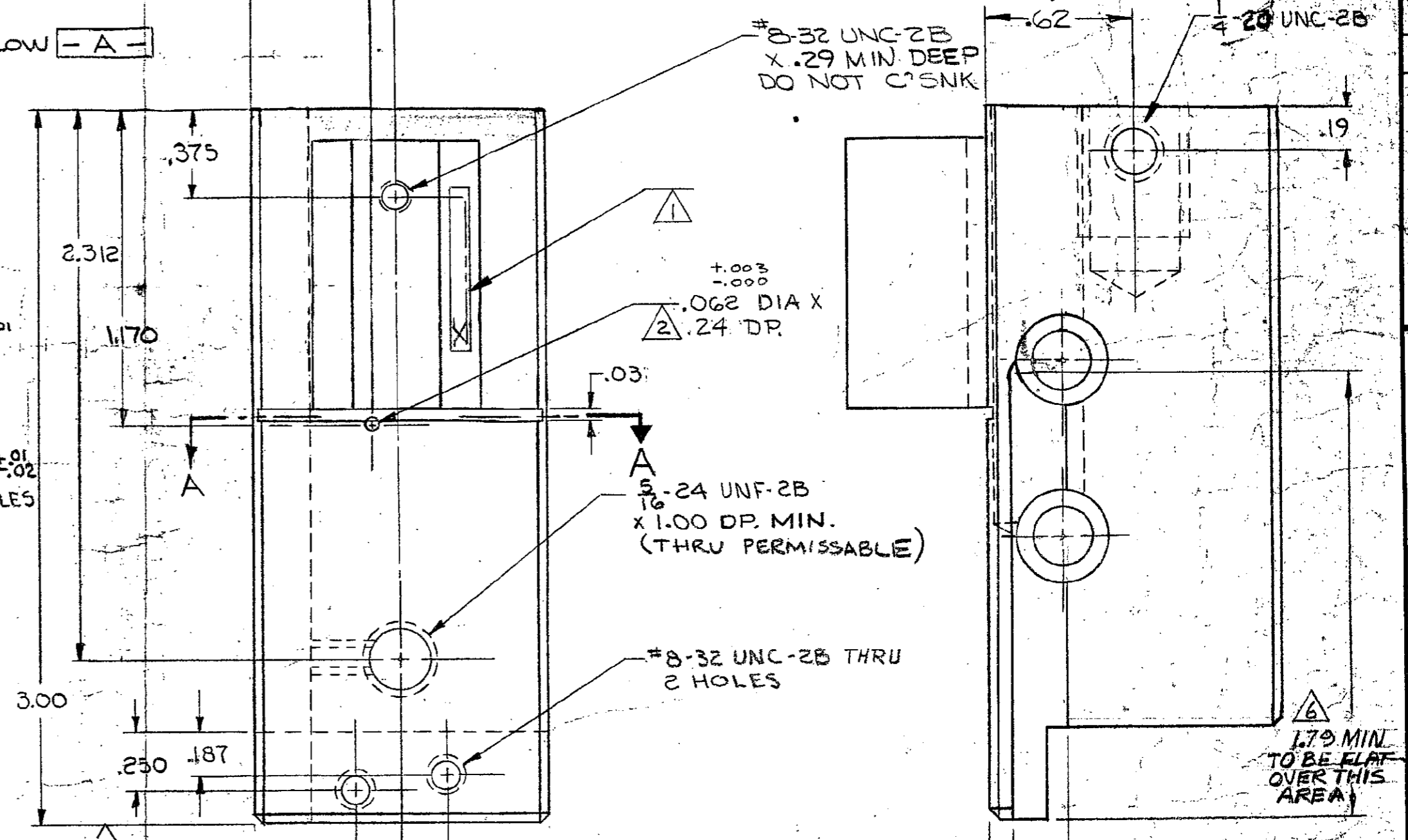
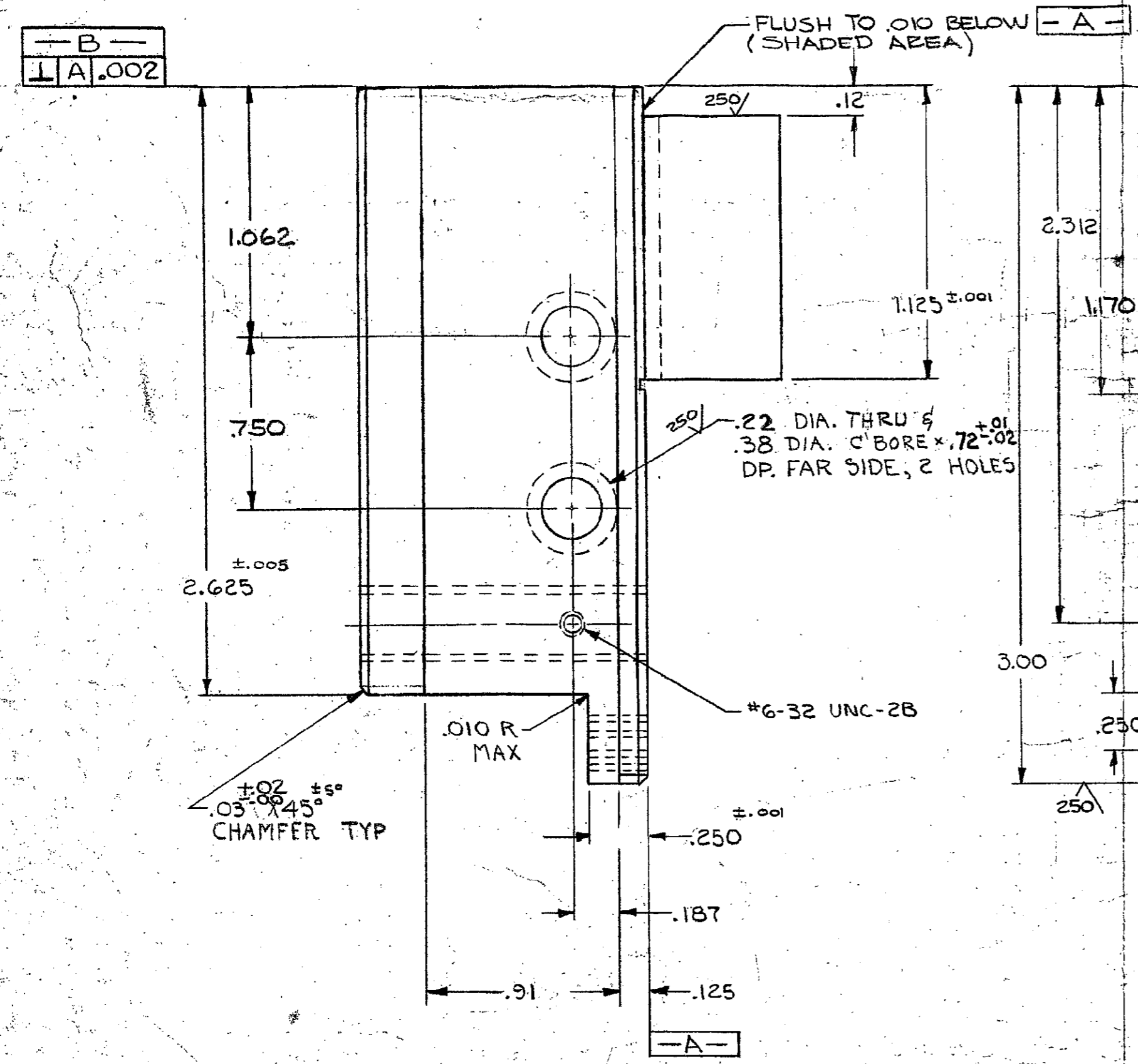
Δ INDIVIDUALLY PACKAGE PERMES 10-30

Δ UNDERCUT MAY BE RADIIUSED OR ACROSS FACE OF RAM.

Δ .250 \pm .002 SLOT TO BE HELD OVER 1.81 DIM. IT IS PERMISSIBLE FOR SLOT TO CONTINUE TO OTHER END OF PART.



SECT. A-A



QUAN.	PART NO.	DESCRIPTION	REMARKS
1	21028-2	PIN, SLOTTED SPRING	.062 DIA X .25 LG.
1		RAM	

UNLESS OTHERWISE SPECIFIED: FRACTIONS: 1/64 DECIMALS: .005, .02, .050, .0005, .00005		125/
MATERIAL: ALY STL	DR: 10-14-69	APP: I.K. MILLER
HEAT TREAT: H-52 R-50-54	CHK: [Signature]	REL: [Signature]
COATING OR PLATING: [Blank]	AMP INCORPORATED, HARRISBURG, PENNA.	
W/ ECN: 0150-0262-100	DATE: 4-00	TERMINAL FIRST USED: [Blank]
V/ ECN: R-7146	DATE: 10-66	LOC: A C
T/ REV PER ECN: R-5488	DATE: 8-89	NO: 690476 W
S/ REV PER ECN: R-3151	DATE: 8-79	NAME: RAM APPLICATOR
U/ REV PER ECN: R-2045	DATE: 4-77	SCALE: 2:1
R/ SUPD REDRAWN W/ CR: 150	DATE: 1-74	
LTR: [Blank]	DATE: [Blank]	

USED ON [Blank]
SIMILAR 238016

THIS INFORMATION IS CONFIDENTIAL AND IS DISCLOSED TO YOU ON CONDITION THAT NO FURTHER DISCLOSURE IS MADE BY YOU TO OTHER THAN AMP PERSONNEL WITHOUT WRITTEN AUTHORIZATION FROM AMP INCORPORATED, HARRISBURG, PA. DIMENSIONS IN INCHES. DO NOT SCALE PRINT.