



CIRCULAR PLASTIC CONNECTORS (CPC) PROTECTIVE CAPS

TE Connectivity (TE) CPC disposable protective caps are designed to fit the existing CPC plugs and receptacles, providing protection from environmental contaminants during storage and handling. The low-cost protective caps seamlessly fit the CPC plugs and receptacle when not mated for added protection from dust, dirt, storage, shipping and handling damage. Protective caps act as insurance on your expensive connectors and cable assemblies. Caps are available in orange, black, red and yellow.

FEATURES

- Design to fit existing CPC portfolio
- Disposable
- Temperature resistant up to 80° C
- Recyclable

APPLICATIONS

- Robotics
- Industrial machinery
- Instrumentation
- Material handling
- Power supplies
- Welding equipment

MECHANICAL

- Designed to fit shell sizes 11, 13, 17, and 23 for Series 1-6

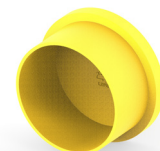
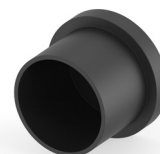
MATERIALS

- LDPE (Low Density Polyethylene)

Circular Plastic Connectors (CPC) Protective Caps

PART NUMBERS

Cap Type	Shell Size	Color	Part Number	Description
PLUG	11	ORANGE	2407269-1	CAP, CPC, SIZE 11, PLUG, ORANGE
		BLACK	2407269-2	CAP, CPC, SIZE 11, PLUG, BLACK
		RED	2407269-3	CAP, CPC, SIZE 11, PLUG, RED
		YELLOW	2407269-4	CAP, CPC, SIZE 11, PLUG, YELLOW
RECEPTACLE/ PLUG	11/13	ORANGE	1-2407269-1	CAP, CPC, SIZE 11 RECP & 13 PLUG, ORANGE
		BLACK	1-2407269-2	CAP, CPC, SIZE 11 RECP & 13 PLUG, BLACK
		RED	1-2407269-3	CAP, CPC, SIZE 11 RECP & 13 PLUG, RED
		YELLOW	1-2407269-4	CAP, CPC, SIZE 11 RECP & 13 PLUG, YELLOW
RECEPTACLE	13	ORANGE	2-2407269-1	CAP, CPC, SIZE 13 RECP, ORANGE
		BLACK	2-2407269-2	CAP, CPC, SIZE 13 RECP, BLACK
		RED	2-2407269-3	CAP, CPC, SIZE 13 RECP, RED
		YELLOW	2-2407269-4	CAP, CPC, SIZE 13 RECP, YELLOW
PLUG	17	ORANGE	3-2407269-1	CAP, CPC, SIZE 17 PLUG, ORANGE
		BLACK	3-2407269-2	CAP, CPC, SIZE 17 PLUG, BLACK
		RED	3-2407269-3	CAP, CPC, SIZE 17 PLUG, RED
		YELLOW	3-2407269-4	CAP, CPC, SIZE 17 PLUG, YELLOW
RECEPTACLE	17	ORANGE	4-2407269-1	CAP, CPC, SIZE 17 RECP, ORANGE
		BLACK	4-2407269-2	CAP, CPC, SIZE 17 RECP, BLACK
		RED	4-2407269-3	CAP, CPC, SIZE 17 RECP, RED
		YELLOW	4-2407269-4	CAP, CPC, SIZE 17 RECP, YELLOW
PLUG	23	ORANGE	5-2407269-1	CAP, CPC, SIZE 23 PLUG, ORANGE
		BLACK	5-2407269-2	CAP, CPC, SIZE 23 PLUG, BLACK
		RED	5-2407269-3	CAP, CPC, SIZE 23 PLUG, RED
		YELLOW	5-2407269-4	CAP, CPC, SIZE 23 PLUG, YELLOW
RECEPTACLE	23	ORANGE	6-2407269-1	CAP, CPC, SIZE 23 RECP, ORANGE
		BLACK	6-2407269-2	CAP, CPC, SIZE 23 RECP, BLACK
		RED	6-2407269-3	CAP, CPC, SIZE 23 RECP, RED
		YELLOW	6-2407269-4	CAP, CPC, SIZE 23 RECP, YELLOW



Connect With Us

We make it easy to connect with our experts and are ready to provide the support you need. Visit te.com/support to chat with a Product Information Specialist.

te.com/circular-plastic-connectors

TE Connectivity, TE, TE connectivity (logo) and EVERY CONNECTION COUNTS are trademarks owned or licensed by the TE Connectivity plc family of companies. All other logos, products and/or company names referred to herein might be trademarks of their respective owners.

While TE has made every reasonable effort to ensure the accuracy of the information in this document, TE does not guarantee that it is error-free, nor does TE make any other representation, warranty or guarantee that the information is accurate, correct, reliable or current. TE reserves the right to make any changes to the information contained herein without prior notice. TE Connectivity's obligations shall only be as set forth in TE Connectivity's Standard Terms and Conditions of Sale for this product and in no case will TE Connectivity be liable for any incidental, indirect, or consequential damages arising out of the sale, resale, use, or misapplication of the product. TE expressly disclaims any implied warranties with respect to the information contained herein, including, but not limited to, implied warranties of merchantability or fitness for a particular purpose. Dimensions, specifications and/or information contained herein are for reference purposes only and are subject to change without notice. Consult TE for the latest dimensions, specifications and/or information. Users of TE Connectivity products must make their own assessment as to whether the respective product is suitable for the respective desired application.

©2026 TE Connectivity. All Rights Reserved.

01-26