



**Part Number :** [936014325](#)

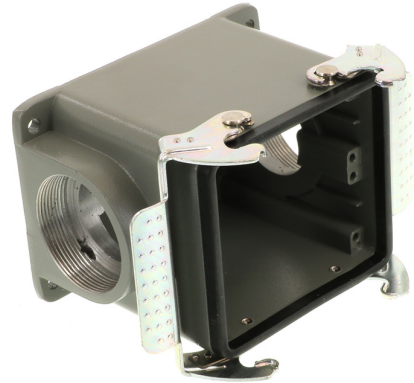
**Product Description :** GWconnect STD - Standard, Double Lever Surface Mount Housing, Die-cast Aluminum, with 2 Levers, with Gasket, Size 32B «77x62», Pg36x2 Thread, Grey

**Series Number :** 93601

**Status :** Active

**Product Category :** Heavy-Duty Connectors

**Engineering Number :** 7832.6329.0



---

## Product Environment Compliance

### Compliance

GADSL/IMDS	Not Relevant
China RoHS	
EU ELV	Not Relevant
Low-Halogen Status	Not Reviewed per IEC 61249-2-21
REACH SVHC	Not Reviewed per D(2024)6225-DC (07 Nov 2024)
EU RoHS	Compliant per EU 2015/863

### Multiple Part Product Compliance Statements

- Eu RoHS
- REACH SVHC
- Low-Halogen

### Multiple Part Industry Compliance Documents

- IPC 1752A Class C
- IPC 1752A Class D
- Molex Product Compliance Declaration
- IEC-62474
- chemSHERPA (xml)

### EU RoHS Certificate of Compliance

---

## Part Details

## General

Status	Active
Category	Heavy-Duty Connectors
Series	93601
Description	GWconnect STD - Standard, Double Lever Surface Mount Housing, Die-cast Aluminum, with 2 Levers, with Gasket, Size 32B «77x62», Pg36x2 Thread, Grey
Component Type	Double Lever SMT Housing
IP Rating	IP66
Product Name	GWconnect
Standard	ANSI/UL 50, ANSI/UL 50 E, CSA C22.2 No.94-1-2, EN 61984
Type	STD
UPC	887191894218

## Agency

CSA	256883
UL	E249674

## Electrical

Voltage - Maximum	500V
-------------------	------

## Physical

Component Size	32B «77X62»
Housing Coating	Polyester Powder
Housing Color	Grey RAL 7037
Lock to Mating Part	Yes
Material - Gasket	NBR
Material - Housing	Die-cast Aluminum
Material - Lever	Galvanized Steel
Mounting Style	Surface Mount
Net Weight	656.000/g
Number of Levers	2
Packaging Type	Bag

Thread Size	Pg36x2
Thread Type	(Pg)

---

**Use with Part(s)**

Description	Part Number
Use With	Size 32B «77x62» S-D, S-DD, S-E, S-EE, S-EP, S-ES, S-HSB, S-ESHV, S-K, S-M, and S-EHV Inserts

---

This document was generated on Feb 09, 2025