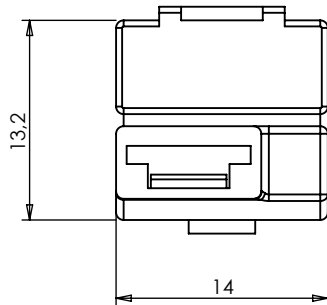
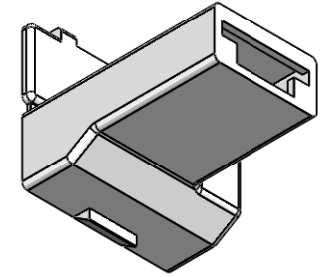
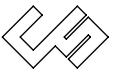


SEZIONE A-A



4	Aggiornato cartiglio	29/04/2011
3	Corretto disegno	06/10/2000
2	Creato scarico su dente di aggancio terminale	15/09/2000
1	Modificata geometria	24/05/2000

INDEX	MODIFICATION	DATE
-------	--------------	------


**COLOMBO SERGIO e Figli S.r.l.**  
 20063 CERNUSCO S/N - VIA COMO, 11  
 TEL +39.02.9210.7404 - FAX +39.02.9210.0217  
 http://www.cscolombo.com - e-mail: info@cscolombo.com

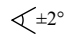
CHECKED BY	DATE	DESIGN UNITS
Stefano Galimberti	29/04/2011	METRIC

DRAWN BY	DATE	WEIGHT
Stefano Querzoli	29/04/2011	

SCALE	CAD REFER	SIZE	INDEX 0
2:1	Y:\dis\cs\63\6329\	A4	12/12/1995

BASE CODE	DESCRIPTION
63N029	Giunto 90° per terminale femmina 6.3 mm aggraff. tradiz.

	63N029	PA66 UL94 V-2
	63N029V0	PA6/66 UL94 V-0
	63N029STY	PA46 UL94 V-2
	63N029V0750NF	PA66 UL94 V-0 GWIT 775
	63N029-G	PA6 UL94 V-2 GWIT 775
	PART NUMBER	MATERIAL

DIMENSIONS WITHOUT TOLERANCES		
 $\pm 2^\circ$	0 - 6	$\pm 0.1$
	6 - 30	$\pm 0.2$
	> 30	$\pm 0.3$