



Part Number : [03092042](#)

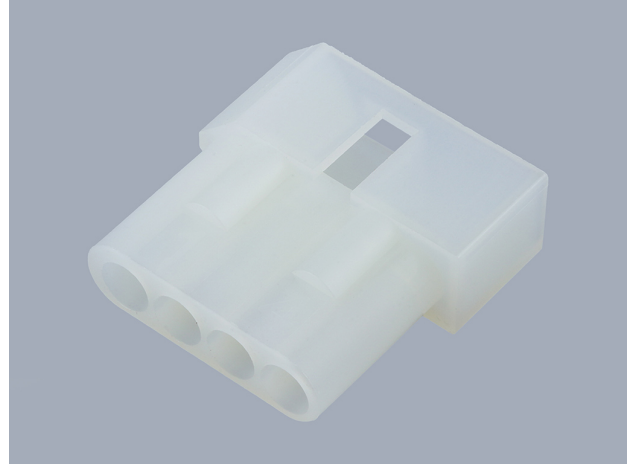
Product Description : 2.36mm Diameter Standard .093" Pin and Socket Plug Housing, 4 Circuits, Single Row

Series Number : 1490

Status : Active

Product Category : Connector Housings

Engineering Number : 1490-P1



Documents & Resources

Drawings

[003092042_sd.pdf](#)

[PK-1490-001-001.pdf](#)

3D Models and Design Files

[003092042_stp.zip](#)

Specifications

[PS-02-09-001.pdf](#)


[PS-1490-001-001.pdf](#)

[PS-1490-002-001.pdf](#)

[PS-43660-9999-001.pdf](#)

Product Environment Compliance

Compliance

GADSL/IMDS	Not Relevant
China RoHS	
EU ELV	Not Relevant
Low-Halogen Status	Low-Halogen per IEC 61249-2-21
REACH SVHC	Not Contained per D(2024)6225-DC (07 Nov 2024)
EU RoHS	Compliant per EU 2015/863

[Multiple Part Product Compliance Statements](#)

- Eu RoHS
- REACH SVHC
- Low-Halogen

Multiple Part Industry Compliance Documents

- IPC 1752A Class C
- IPC 1752A Class D
- Molex Product Compliance Declaration
- IEC-62474
- chemSHERPA (xml)

EU RoHS Certificate of Compliance

Part Details

General

Status	Active
Category	Connector Housings
Series	1490
Description	2.36mm Diameter Standard .093" Pin and Socket Plug Housing, 4 Circuits, Single Row
Application	Power, Wire-to-Wire
Comments	14.0A max. can be achieved when housing is used with 42477 or 42478 terminals
Product Name	Standard .093"
UPC	800753614840

Agency

CSA	LR19980
UL	E29179

Physical

Circuits Detail	(1 x 4)
Circuits (maximum)	4
Color - Resin	Natural
Flammability	94V-2
Gender	Plug
Glow-Wire Capable	No

Material - Resin	Nylon
Net Weight	2.142/g
Number of Rows	1
Packaging Type	Bag
Panel Mount	No
Pitch - Mating Interface	5.03mm
Pitch - Termination Interface	5.03mm
Stackable	No
Temperature Range - Operating	-40° to +105°C

Solder Process Data

Lead-Free Process Capability	N/A
------------------------------	-----

Mates With / Use With

Mates with Part(s)

Description	Part Number
2.36mm Diameter Standard .093" Pin and Socket Receptacle Housing, 4 Circuits, Single Row, Natural	<u>03091041</u>
2.36mm Diameter Standard .093" Pin and Socket Receptacle Housing, 4 Circuits, Single Row, Natural	<u>03091042</u>

Use with Part(s)

Description	Part Number
Standard .093" Pin and Socket Female Crimp Terminals	<u>1189</u>
Standard .093" Pin and Socket Male Crimp Terminals	<u>1190</u>
Standard .093" Pin and Socket Male Crimp Terminals	<u>1380</u>
Standard .093" Pin and Socket Female Crimp Terminals	<u>1381</u>
Standard .093" Pin and Socket Male Crimp Terminal	<u>1434</u>
Standard .093" Pin and Socket Male Crimp Grounding Terminals	<u>1973</u>
Standard .093" Pin and Socket Female Crimp Terminal	<u>4550</u>

This document was generated on Feb 13, 2025