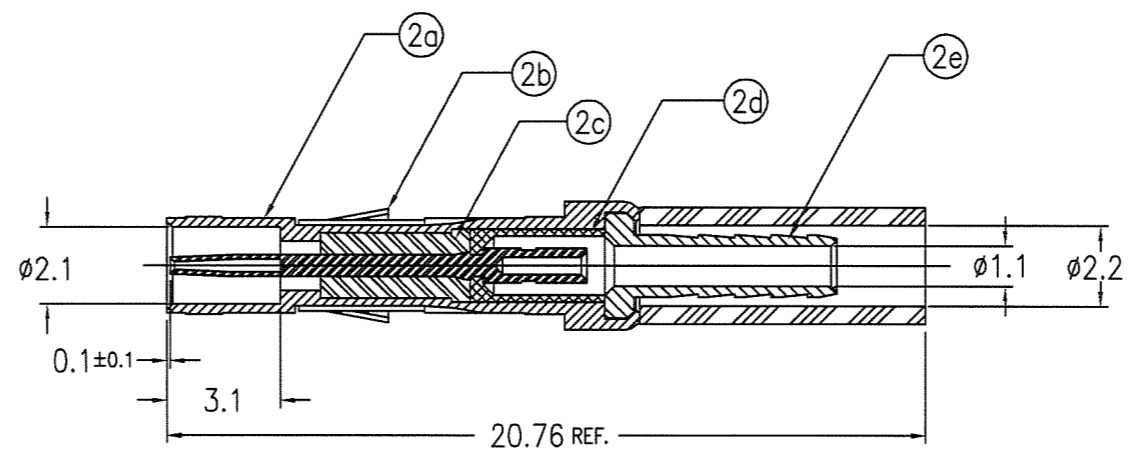
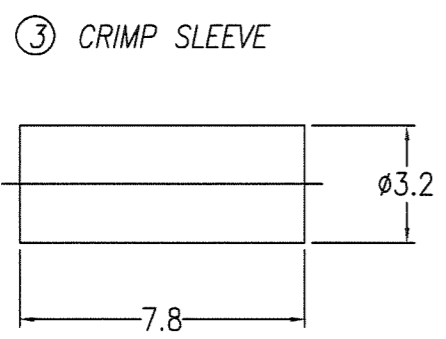
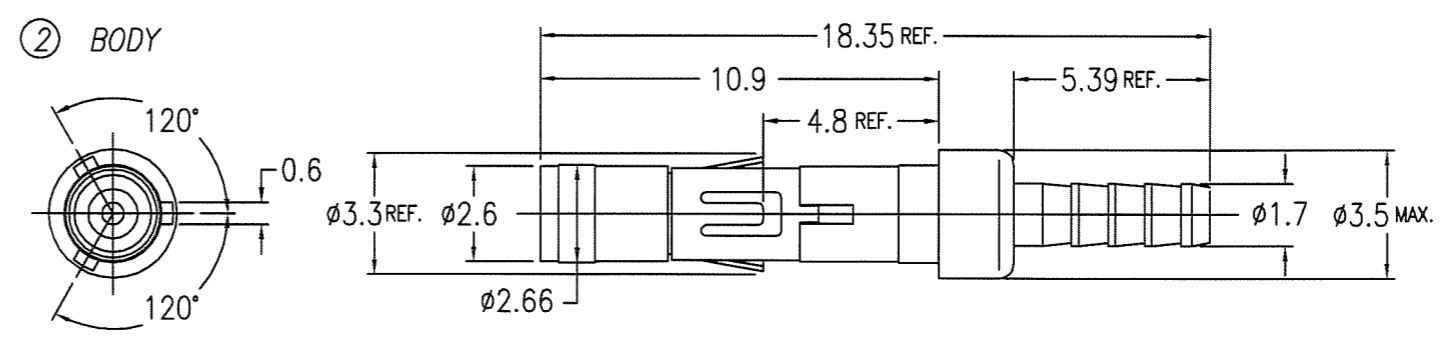
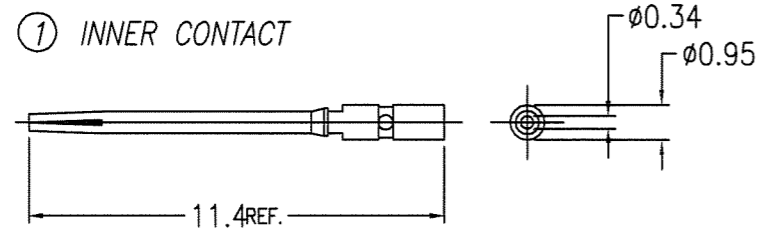


PRODUCT NO.	CABLES
61427-001	RG196A/U
61427-001LF	



AFTER ASSY

NOTES

- PULL OUT FORCE OF CENTER CONTACT MUST BE 0.1N MIN. / 0.8N MAX.
- ASSEMBLE PRODUCT WITH TOOL HT430, USE CRIMP BITS NO.193460-001
- ADD AN LF SUFFIX TO PART NUMBERS FOR PRODUCT THAT MEETS EUROPEAN UNION DIRECTIVES AND OTHER COUNTRY REGULATIONS AS DESCRIBED IN GS-22-008.
- THIS PRODUCT IS NOT INTENDED TO BE EXPOSED TO A MANUFACTURING SOLDER PROCESS.

No.	DESCRIPTION	MATERIAL	PLATING
①	INNER CONTACT	BERYLLIUM COPPER	Au 1.27um MIN.
②	BODY		
②a	SHELL	BRASS	Au 1.27um MIN.
②b	SPRING CLIP	BERYLLIUM COPPER	Ni 1.27um MIN.
②c	FRONT INSULATOR	PTFE	
②d	REAR INSULATOR	PTFE	
②e	FERRULE	BRASS	Au 0.05um MIN.
③	CRIMP SLEEVE	BRASS	Au 0.05um MIN.

mat'l. code ---				surface ISO 1302 ✓	tolerance ISO 406 ISO 1101	projection	product family METRAL	CODE JP
ltr	description	ecn no	dr	date	tolerances unless otherwise specified		title	
B	REVISED	J70160	M.N	6/20/'97	angles	linear 0.X ±0.2	METRAL MINICOAX CONTACT KIT	
C	REVISED	J80042	Y.K	2/16/'98	0°±2'	0.XX ±0.2	FEMALE CRIMP-TO-WIRE	
D	REVISED	J80070	Y.K	3/9/'98		0.XXX ±0.2	scale 5:1	
E	REVISED	J90011	Y.K	1/12/'99	dr	M.NAGASE	12/5/'96	dwg no
F	REVISED	J90036	Y.K	2/1/'99	enrg	S.OKUDAIRA	1/18/'07	sheet 1 of 4 size
G	REVISED	J06-0005	S.O	3/15/'06	chr	R. Shoji	1/18/'07	61427
H	REVISED	J07-0030	S.O	1/18/'07	appd	S. Okudaira	1/18/'07	A3
sheet index	revision sheet	H	E	F	D			Rev. H
		1	2	3	4			

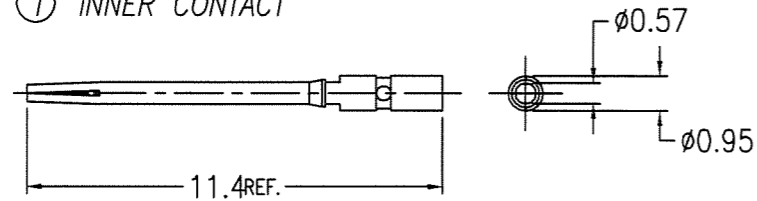


FCIconnect.com

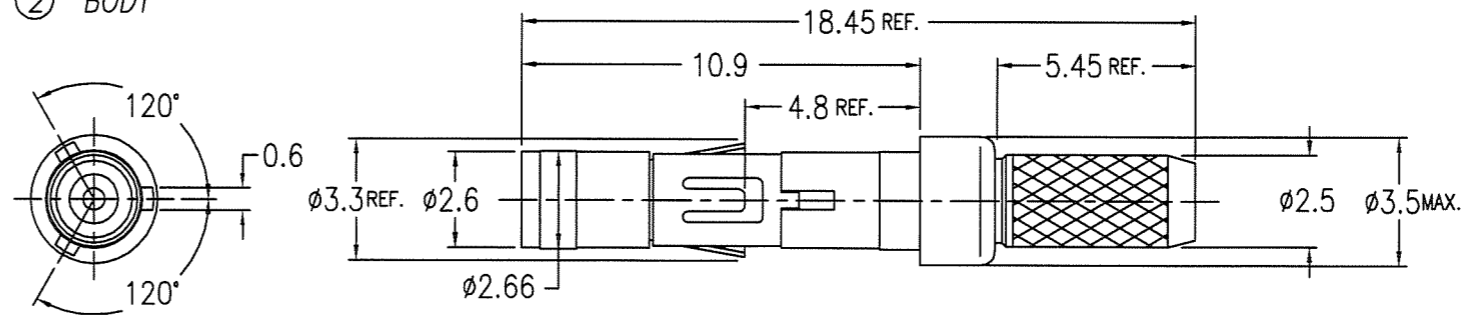
Copyright FCI.

PRODUCT NO.	CABLES
61427-002	RG188A/U
61427-002LF	

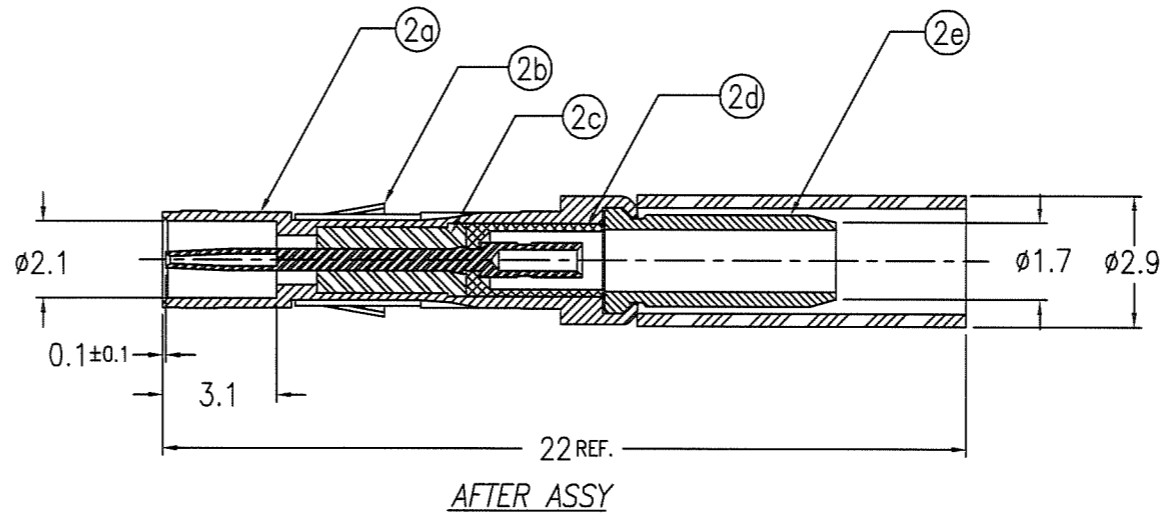
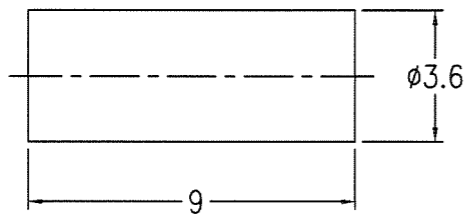
① INNER CONTACT



② BODY



③ CRIMP SLEEVE



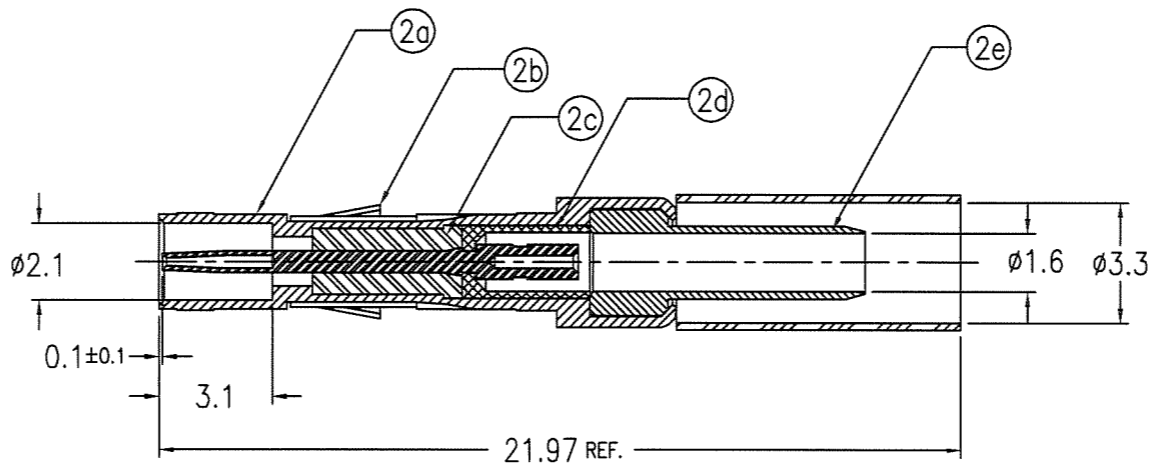
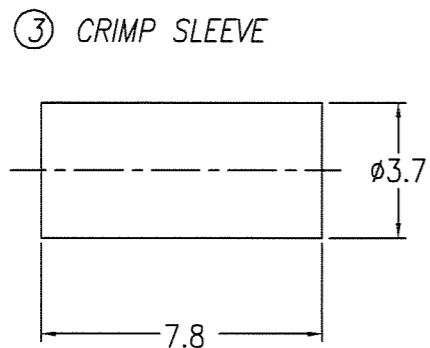
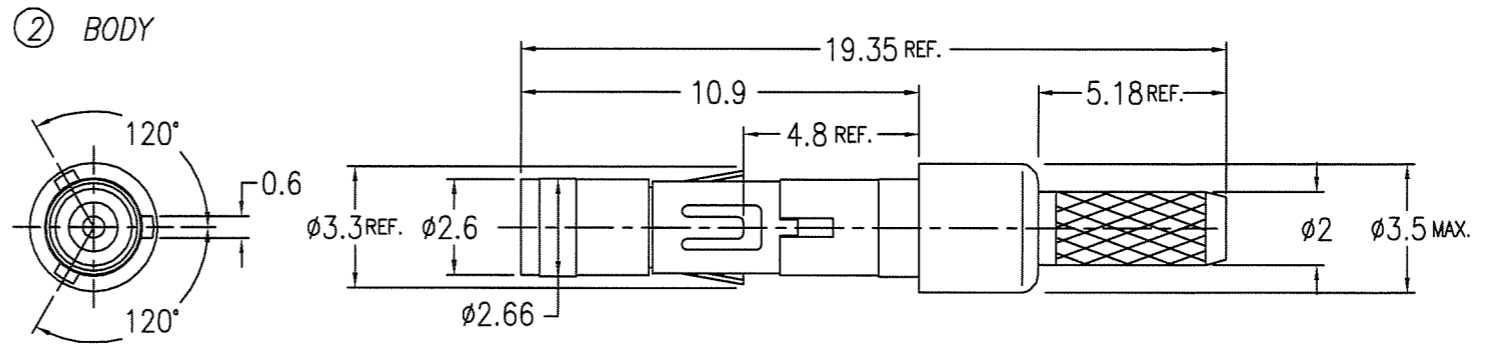
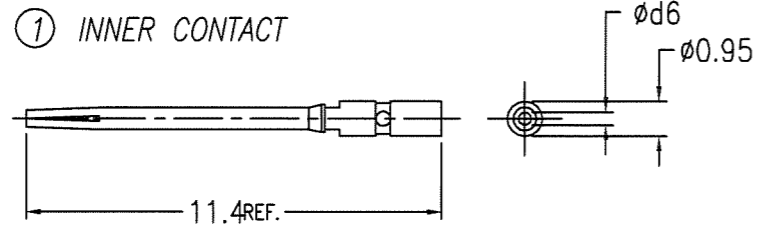
No.	DESCRIPTION	MATERIAL	PLATING
①	INNER CONTACT	BERYLLIUM COPPER	Au 1.27um MIN.
②	BODY		
②a	SHELL	BRASS	Au 1.27um MIN.
②b	SPRING CLIP	BERYLLIUM COPPER	Ni 1.27um MIN.
②c	FRONT INSULATOR	PTFE	
②d	REAR INSULATOR	PTFE	
②e	FERRULE	BRASS	Au 0.05um MIN.
③	CRIMP SLEEVE	BRASS	Au 0.05um MIN.

NOTES

- PULL OUT FORCE OF CENTER CONTACT MUST BE 0.1N MIN. / 0.8N MAX.
- ASSEMBLE PRODUCT WITH TOOL HT430, USE CRIMP BITS NO.193460-001
- ADD AN LF SUFFIX TO PART NUMBERS FOR PRODUCT THAT MEETS EUROPEAN UNION DIRECTIVES AND OTHER COUNTRY REGULATIONS AS DESCRIBED IN GS-22-008.
- THIS PRODUCT IS NOT INTENDED TO BE EXPOSED TO A MANUFACTURING SOLDER PROCESS.

mat'l. code				surface ISO 1302		tolerance ISO 406 ISO 1101		projection		product family METRAL		CODE JP	
---				✓		0.X ±0.2		MM		title			
ltr description ecn no dr date				tolerances unless otherwise specified		0.XX ±0.2		scale 5:1		METRAL MINICOAX CONTACT KIT			
A	RELEASED	J70160	M.N	6/20/97	angles	0.XXX ±0.2			FEMALE CRIMP-TO-WIRE				
B	REVISED	J80070	Y.K	3/9/98	linear					dwg no		sheet 2 of size	
C	REVISED	J90036	Y.K	2/1/99	0°±2'					61427		A3	
D	REVISED	J06-0005	S.O	3/15/06	dr	M.NAGASE	6/20/97			type		Customer Drawing	
E	REVISED	J07-0030	S.O	1/18/07	enr	S.OKUDAIRA	1/18/07					Rev. E	
				chr		R. Shoji	4/18/07						
				app		S. Okuda	1/18/07						
sheet index	revision sheet												

PRODUCT NO.	CABLES
61427-003	DOUBLE SHIELDED TYPE
61427-003LF	M17/152-0001(HARBOUR INDUSTRIES)



AFTER ASSY

NOTES

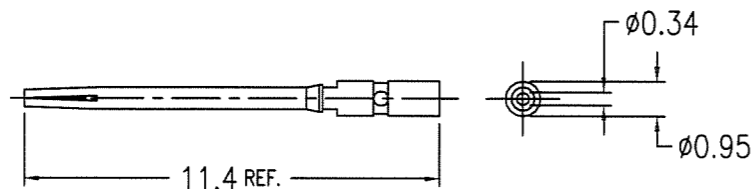
- PULL OUT FORCE OF CENTER CONTACT MUST BE 0.1N MIN. / 0.8N MAX.
- ASSEMBLE PRODUCT WITH TOOL HT430, USE CRIMP BITS NO.193460-001
- ADD AN LF SUFFIX TO PART NUMBERS FOR PRODUCT THAT MEETS EUROPEAN UNION DIRECTIVES AND OTHER COUNTRY REGULATIONS AS DESCRIBED IN GS-22-008.
- THIS PRODUCT IS NOT INTENDED TO BE EXPOSED TO A MANUFACTURING SOLDER PROCESS.

No.	DESCRIPTION	MATERIAL	PLATING
①	INNER CONTACT	BERYLLIUM COPPER	Au 1.27um MIN.
②	BODY		
②a	SHELL	BRASS	Au 1.27um MIN.
②b	SPRING CLIP	BERYLLIUM COPPER	Ni 1.27um MIN.
②c	FRONT INSULATOR	PTFE	
②d	REAR INSULATOR	PTFE	
②e	FERRULE	BRASS	Au 0.05um MIN.
③	CRIMP SLEEVE	BRASS	Au 0.05um MIN.

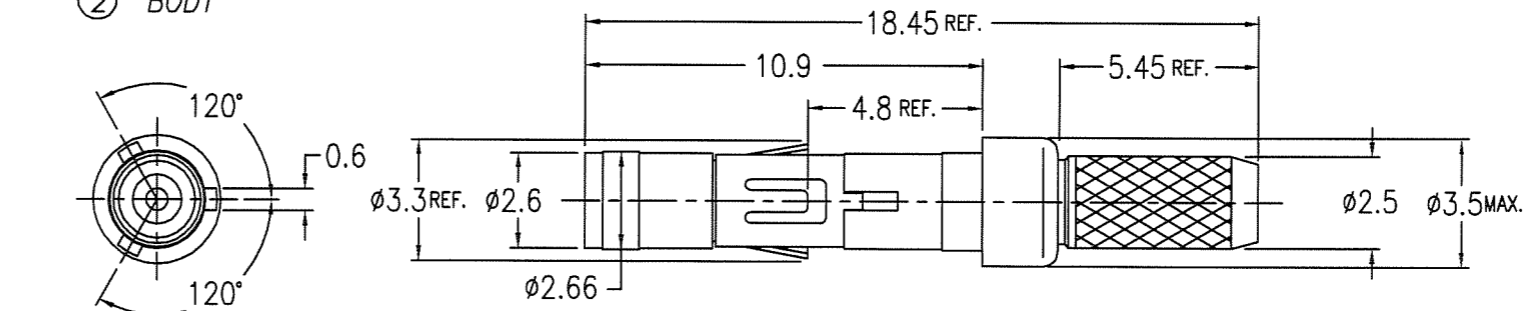
mat'l. code				surface ISO 1302		tolerance ISO 406 ISO 1101		projection		product family METRAL		CODE JP	
---				✓		0.X ±0.2		MM		title			
ltr				description		ecn no		dr		date		tolerances unless otherwise specified	
A	RELEASED	J70160	M.N	6/20/97	angles	linear	0.XX ±0.2			METRAL MINICOAX CONTACT KIT			
B	REVISED	J80042	Y.K	2/16/98	0°±2'		0.XXX ±0.2	scale 5:1		FEMALE CRIMP-TO-WIRE			
C	REVISED	J80070	Y.K	3/9/98	dr		M.NAGASE	6/20/97		dwg no		sheet 3 of	
D	REVISED	J90036	Y.K	2/1/99	enrg		S.OKUDAIRA	1/18/07		61427		A3	
E	REVISED	J06-0005	S.O	3/15/06	chr		R. Shoji	1/18/07		type		Customer Drawing	
F	REVISED	J07-0030	S.O	1/18/07	appd		S. Okudaira	1/18/07		Rev.		F	
sheet index		revision sheet											

PRODUCT NO.	CABLES
61427-004	1.5C-XV
61427-004LF	1.5C-QEV.CW

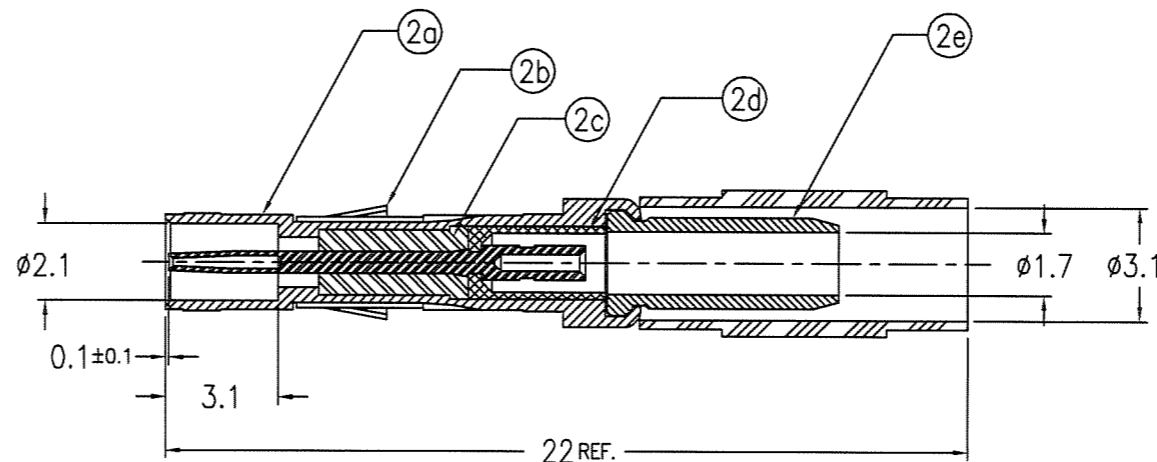
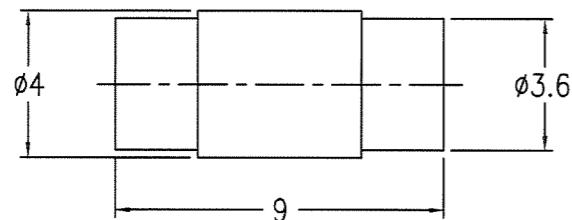
① INNER CONTACT



② BODY



② CRIMP SLEEVE



AFTER ASSY

NOTES

- PULL OUT FORCE OF CENTER CONTACT MUST BE 0.1N MIN. / 0.8N MAX.
- ASSEMBLE PRODUCT WITH TOOL HT430, USE CRIMP BITS NO.193460-001
- ADD AN LF SUFFIX TO PART NUMBERS FOR PRODUCT THAT MEETS EUROPEAN UNION DIRECTIVES AND OTHER COUNTRY REGULATIONS AS DESCRIBED IN GS-22-008.
- THIS PRODUCT IS NOT INTENDED TO BE EXPOSED TO A MANUFACTURING SOLDER PROCESS.

No.	DESCRIPTION	MATERIAL	PLATING
①	INNER CONTACT	BERYLLIUM COPPER	Au 1.27um MIN.
②	BODY		
②a	SHELL	BRASS	Au 1.27um MIN.
②b	SPRING CLIP	BERYLLIUM COPPER	Ni 1.27um MIN.
②c	FRONT INSULATOR	PTFE	
②d	REAR INSULATOR	PTFE	
②e	FERRULE	BRASS	Au 0.05um MIN.
③	CRIMP SLEEVE	BRASS	Au 0.05um MIN.

mat'l. code		surface ISO 1302		tolerance ISO 406 ISO 1101		projection		product family METRAL		CODE JP	
---		✓		0.X ±0.2		MM		title			
A REVISED		J90011 Y.K 1/12/'99		0.XX ±0.2		scale 5:1		METRAL MINICOAX CONTACT KIT			
B REVISED		J90036 Y.K 2/1/'99		0.XXX ±0.2				FEMALE CRIMP-TO-WIRE			
C REVISED		J06-0005 S.O 3/15/'06						dwg no		sheet 4 of	
D REVISED		J07-0030 S.O 1/18/'07						61427		A3	
		dr Y.KODAIRA 1/12/'99						type		Customer Drawing	
		enr S.OKUDAIRA 1/18/'07									
		chr R. Shoyji 1/18/'07									
		app J. Oudaris 1/18/'07									
sheet index		revision sheet								Rev. D	