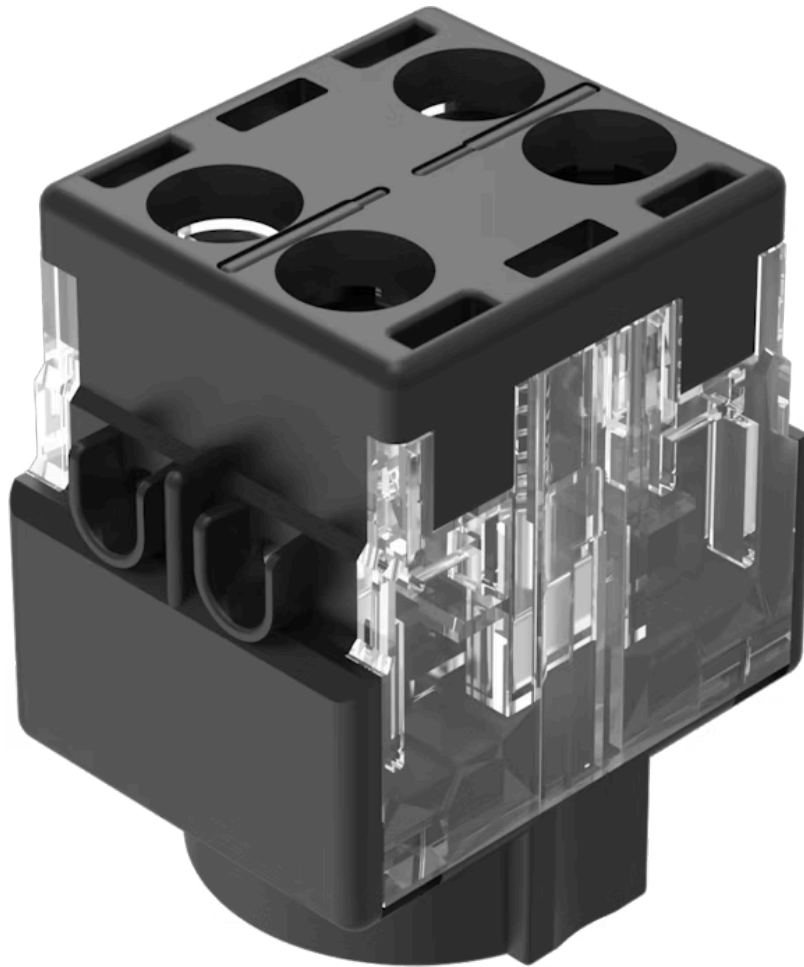


Switching element

61-8755.11



<https://eao.com/p/61-8755.11>

Your product:



61-8755.11 Switching element

ELECTRICAL CHARACTERISTICS

Recommended minimum operational data:

Voltage 20 VAC/DC
Current 100 mA

Standards:

The switches comply with the "Standards for low-voltage switching devices" EN IEC 60947-5-1

Thermal current I_{th}:

5 A, according to EN / IEC 60947-5-1

Contact resistance:

New state ≤ 50 m Ω , as per DIN/IEC 60512-2-4, measured at 100 mA, 10 V

Electric strength:

4000 VAC, 50 Hz, 1 minute, as per DIN / IEC 60512-2 between all terminals and earth

Overvoltage category:

III, according to EN / IEC 60947-5-1

Protection class:

II, according to EN / IEC 61058-1

Rated impulse withstand voltage U_{imp}:

4 kV, according to EN/IEC 60947-5-1

Rated insulation voltage U_i:

320 VAC, according to EN / IEC 60947-5-1

Rated Operational Voltage U_e:

250 VAC/DC according to EN IEC 60947-1

Contacts:

2 NC

Electrical lifetime:

$\geq 50\,000$ cycles of operation at 250VAC, 2A, $\cos\phi$ 0.95,

Pollution degree:

3, according to EN IEC 60947-1

Switching voltage and switching current:

Switch rating AC with silver contact
Service category AC-15
according to EN IEC 60947-5-1

Voltage	125 VAC	250 VAC
Current	3 A	2 A

Switch rating DC with silver contact
Service category DC-13
according to EN IEC 60947-5-1

Voltage	250 VDC
Current	0.2 A

MECHANICAL CHARACTERISTIC

Switching positions:

3 positions

Switching system:	Double-break slow-make system, contact opening width 2 x 1.5 mm, with 2 x 2 contact points per switching element. NC-contact elements in the slow-make elements fulfill requirements of switches with forced opening as per EN / IEC 60947-5-12.17.
Wire cross section:	1 wire flexible: 0.5 ... 0.75 mm ² 1 wire super flexible: 0.5 mm ² 1 wire rigid: 0.5 ... 1.5 mm ² 2 wires super flexible: 0.5 mm ² 2 wires flexible: 0.5 mm ² 2 wires rigid: 0.75 mm ²
Terminal:	Screw terminal
Weight:	0.008 kg
Contact material:	Silver
Switching system:	Slow-make switching element

AMBIENT CONDITION

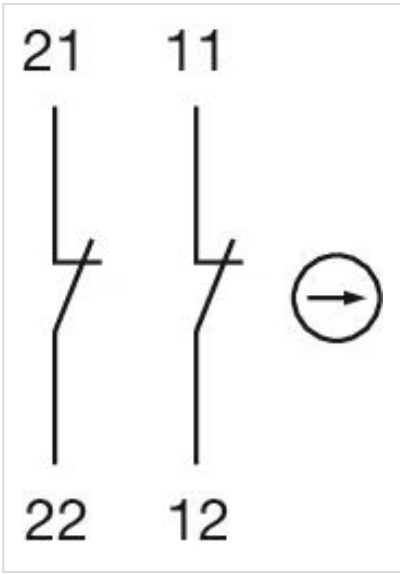
Shock resistance:	Max. 100 m / s ² , pulse width, 3-axis (sinusoidal EN IEC 60068-2-27)
Climate resistance:	Damp heat, cyclic: 96 hours, + 25 °C/97 %, + 55 °C/93 % relative humidity, as per EN IEC 60068-2-30 Damp heat, steady: 56 days, + 40 °C/93 % relative humidity, according to EN IEC 60068-2-78 Rapid change of temperature: 100 cycles, – 40 °C ... + 80 °C, as per EN / IEC 60068-2-14
IP Protection:	IP40
Operating temperature:	– 25 °C ... + 55 °C
Storage temperature:	– 40 °C ... + 85 °C
Vibration resistance:	Max. 100 m / s ² from 10 Hz ... 500 Hz, (sinusoidal EN IEC 60068-2-6)

CERTIFICATE

Approbations:	CB (IEC 60947-5-1), CB (IEC 61058-1), CENELEC CCA-NTR (EN 60947-5-1), CQC, CSA, DNV, EAC, ENEC (EN 61058-1), NFF, SEV (EN / IEC 60947-5-1), UL
Conformities:	CE, UKCA, 2011 / 65 / EC (RoHS), 2014 / 35 / EU (LVD)

OTHER

Material:	Plastic, according to UL 94 V0
Short Description:	Switching element, Slow-make switching element, 250 V AC/DC @ 5 A, Silver, 2 NC, Screw terminal
Hints:	Without lamp terminal
Wiring diagrams:	



Component layouts:

