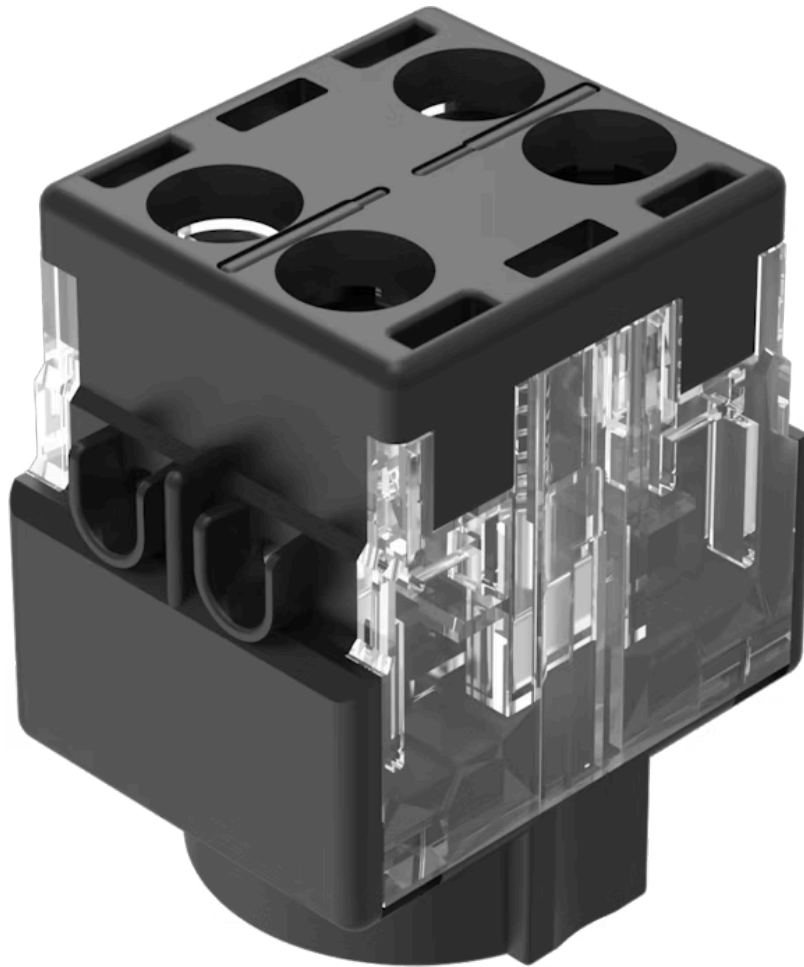


Switching element

61-8655.11



<https://eao.com/p/61-8655.11>

Your product:



61-8655.11 Switching element

ELECTRICAL CHARACTERISTICS

Contacts:	2 NC		
Electrical lifetime:	≥50 000 cycles of operation at 250VAC, 2A, cosφ 0.95,		
Pollution degree:	3, according to EN IEC 60947-1		
Switching voltage and switching current:	Switch rating AC with silver contact Service category AC-15 according to EN IEC 60947-5-1		
	Voltage	125 VAC	250 VAC
	Current	3 A	2 A
	Switch rating DC with silver contact Service category DC-13 according to EN IEC 60947-5-1		
	Voltage	250 VDC	
	Current	0.2 A	
Recommended minimum operational data:	Voltage	20 VAC/DC	
	Current	100 mA	
Standards:	The switches comply with the "Standards for low-voltage switching devices" EN IEC 61058-1, EN IEC 60947-5-1		
Thermal current I_{th}:	5 A, according to EN / IEC 60947-5-1		
Contact resistance:	New state ≤ 50 mΩ, as per DIN/IEC 60512-2-4, measured at 100 mA, 10 V		
Electric strength:	4000 VAC, 50 Hz, 1 minute, as per DIN / IEC 60512-2 between all terminals and earth		
Overvoltage category:	III, according to EN / IEC 60947-5-1		
Protection class:	II, according to EN / IEC 61058-1		
Rated impulse withstand voltage U_{imp}:	4 kV, according to EN/IEC 60947-5-1		
Rated insulation voltage U_i:	320 VAC, according to EN / IEC 60947-5-1		
Rated Operational Voltage U_e:	250 VAC/DC according to EN IEC 60947-1		

MECHANICAL CHARACTERISTIC

Terminal: Screw terminal

Weight:	0.008 kg
Contact material:	Silver
Switching positions:	2 positions
Switching system:	Slow-make switching element
Switching system:	Double-break slow-make system, contact opening width 2 x 1.5 mm, with 2 x 2 contact points per switching element. NC-contact elements in the slow-make elements fulfill requirements of switches with forced opening as per EN / IEC 60947-5-12.17.
Wire cross section:	1 wire flexible: 0.5 ... 0.75 mm ² 1 wire super flexible: 0.5 mm ² 1 wire rigid: 0.5 ... 1.5 mm ² 2 wires super flexible: 0.5 mm ² 2 wires flexible: 0.5 mm ² 2 wires rigid: 0.75 mm ²

AMBIENT CONDITION

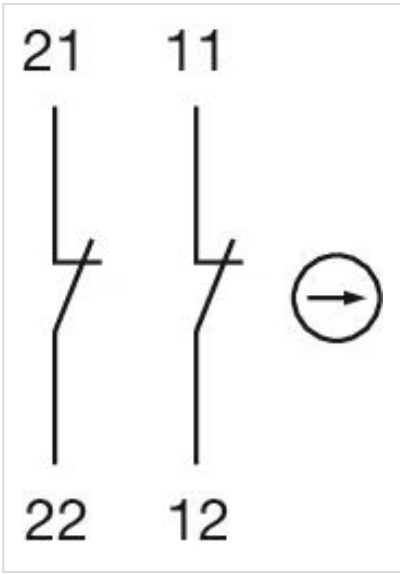
IP Protection:	IP40
Operating temperature:	- 25 °C ... + 55 °C
Storage temperature:	- 40 °C ... + 85 °C
Climate resistance:	Damp heat, cyclic: 96 hours, + 25 °C/97 %, + 55 °C/93 % relative humidity, as per EN IEC 60068-2-30 Damp heat, steady: 56 days, + 40 °C/93 % relative humidity, according to EN IEC 60068-2-78 Rapid change of temperature: 100 cycles, - 40 °C ... + 80 °C, as per EN / IEC 60068-2-14
Shock resistance:	Max. 100 m / s ² , pulse width, 3-axis (sinusoidal EN IEC 60068-2-27)
Vibration resistance:	Max. 100 m / s ² from 10 Hz ... 500 Hz, (sinusoidal EN IEC 60068-2-6)

CERTIFICATE

Approbations:	CB (IEC 60947-5-1), CB (IEC 61058-1), CENELEC CCA-NTR (EN 60947-5-1), CQC, CSA, DNV, EAC, ENEC (EN 61058-1), NFF, SEV (EN / IEC 60947-5-1), UL
Conformities:	CE, UKCA, 2011 / 65 / EC (RoHS), 2014 / 35 / EU (LVD)

OTHER

Material:	Plastic, according to UL 94 V0
Short Description:	Switching element, Slow-make switching element, 250 V AC/DC @ 5 A, Silver, 2 NC, Screw terminal
Wiring diagrams:	



Component layouts:

