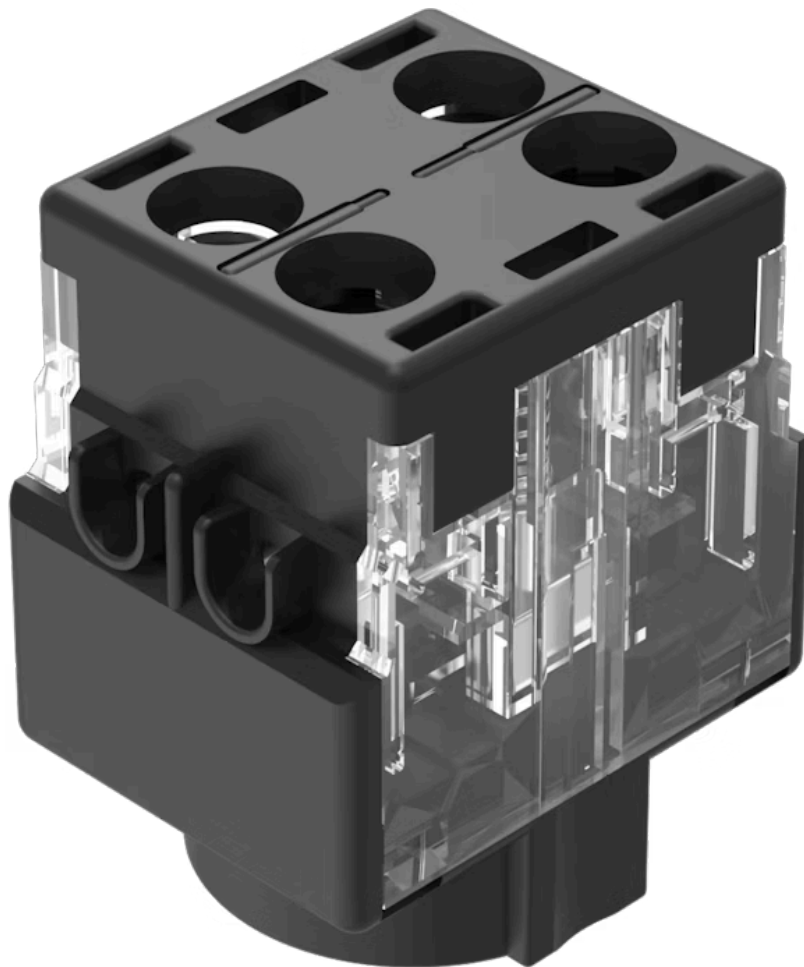


# Switching element

61-8625.11



<https://eao.com/p/61-8625.11>

Your product:



## 61-8625.11 Switching element

### ELECTRICAL CHARACTERISTICS

<b>Contacts:</b>	2 NO
<b>Electrical lifetime:</b>	≥50 000 cycles of operation at 250VAC, 2A, $\cos\phi$ 0.95,
<b>Pollution degree:</b>	3, according to EN IEC 60947-1
<b>Switching voltage and switching current:</b>	Switch rating AC with silver contact Service category AC-15 according to EN IEC 60947-5-1 Voltage 125 VAC 250 VAC Current 3 A 2 A Switch rating DC with silver contact Service category DC-13 according to EN IEC 60947-5-1 Voltage 250 VDC Current 0.2 A
<b>Recommended minimum operational data:</b>	Voltage 20 VAC/DC Current 100 mA
<b>Standards:</b>	The switches comply with the "Standards for low-voltage switching devices" EN IEC 61058-1, EN IEC 60947-5-1
<b>Thermal current I<sub>th</sub>:</b>	5 A, according to EN / IEC 60947-5-1
<b>Contact resistance:</b>	New state ≤ 50 mΩ, as per DIN/IEC 60512-2-4, measured at 100 mA, 10 V
<b>Electric strength:</b>	4000 VAC, 50 Hz, 1 minute, as per DIN / IEC 60512-2 between all terminals and earth
<b>Overvoltage category:</b>	III, according to EN / IEC 60947-5-1
<b>Protection class:</b>	II, according to EN / IEC 61058-1
<b>Rated impulse withstand voltage U<sub>imp</sub>:</b>	4 kV, according to EN/IEC 60947-5-1
<b>Rated insulation voltage U<sub>i</sub>:</b>	320 VAC, according to EN / IEC 60947-5-1
<b>Rated Operational Voltage U<sub>e</sub>:</b>	250 VAC/DC according to EN IEC 60947-1

### MECHANICAL CHARACTERISTIC

**Terminal:** Screw terminal

<b>Weight:</b>	0.008 kg
<b>Contact material:</b>	Silver
<b>Switching positions:</b>	2 positions
<b>Switching system:</b>	Slow-make switching element
<b>Switching system:</b>	Double-break slow-make system, contact opening width 2 x 1.5 mm, with 2 x 2 contact points per switching element. NC-contact elements in the slow-make elements fulfill requirements of switches with forced opening as per EN / IEC 60947-5-12.17.
<b>Wire cross section:</b>	1 wire flexible: 0.5 ... 0.75 mm <sup>2</sup> 1 wire super flexible: 0.5 mm <sup>2</sup> 1 wire rigid: 0.5 ... 1.5 mm <sup>2</sup> 2 wires super flexible: 0.5 mm <sup>2</sup> 2 wires flexible: 0.5 mm <sup>2</sup> 2 wires rigid: 0.75 mm <sup>2</sup>

## AMBIENT CONDITION

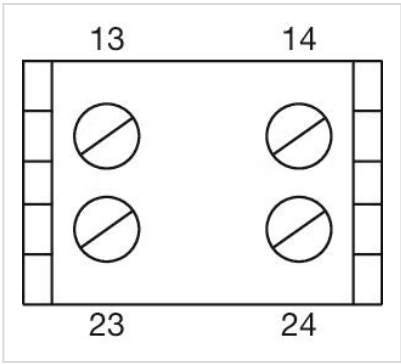
<b>IP Protection:</b>	IP40
<b>Operating temperature:</b>	- 25 °C ... + 55 °C
<b>Storage temperature:</b>	- 40 °C ... + 85 °C
<b>Shock resistance:</b>	Max. 100 m / s <sup>2</sup> , pulse width, 3-axis (sinusoidal EN IEC 60068-2-27)
<b>Climate resistance:</b>	Damp heat, cyclic: 96 hours, + 25 °C/97 %, + 55 °C/93 % relative humidity, as per EN IEC 60068-2-30 Damp heat, steady: 56 days, + 40 °C/93 % relative humidity, according to EN IEC 60068-2-78 Rapid change of temperature: 100 cycles, - 40 °C ... + 80 °C, as per EN / IEC 60068-2-14
<b>Vibration resistance:</b>	Max. 100 m / s <sup>2</sup> from 10 Hz ... 500 Hz, (sinusoidal EN IEC 60068-2-6)

## CERTIFICATE

<b>Approbations:</b>	CB (IEC 60947-5-1), CB (IEC 61058-1), CENELEC CCA-NTR (EN 60947-5-1), CQC, CSA, DNV, EAC, ENEC (EN 61058-1), NFF, SEV (EN / IEC 60947-5-1), UL
<b>Conformities:</b>	CE, UKCA, 2011 / 65 / EC (RoHS), 2014 / 35 / EU (LVD)

## OTHER

<b>Material:</b>	Plastic, according to UL 94 V0
<b>Short Description:</b>	Switching element, Slow-make switching element, 250 V AC/DC @ 5 A, Silver, 2 NO, Screw terminal
<b>Component layouts:</b>	



Wiring diagrams:

