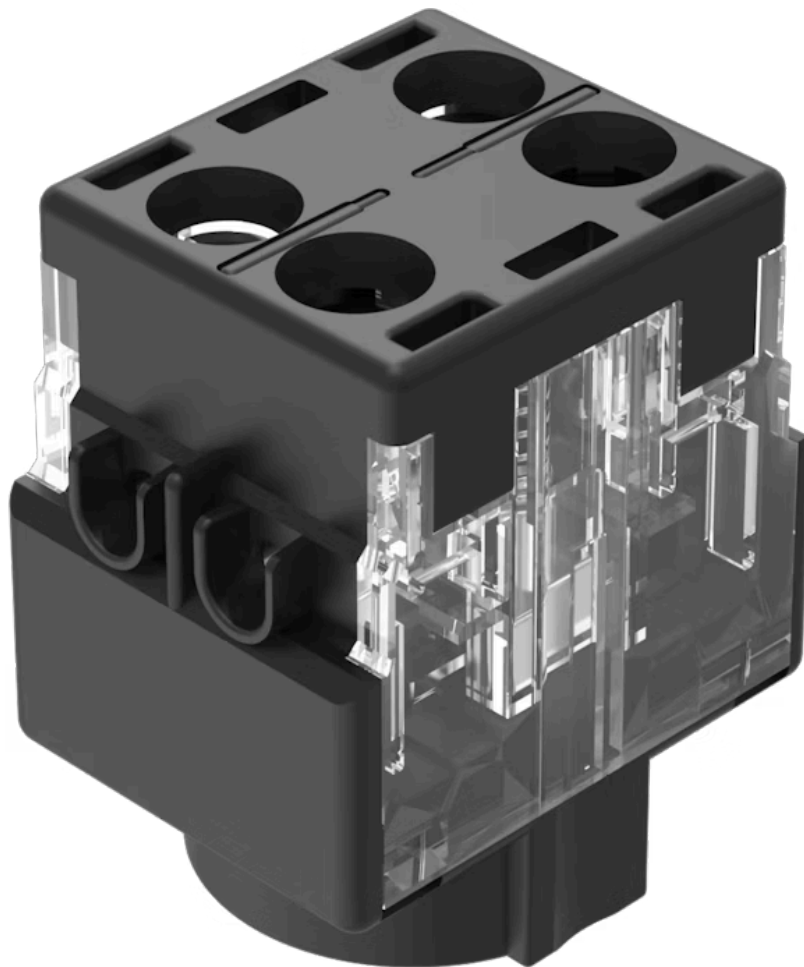


# Switching element

61-8610.11



<https://eao.com/p/61-8610.11>

Your product:



## 61-8610.11 Switching element

### ELECTRICAL CHARACTERISTICS

|   |  |
|---|--|
| <b>Contacts:</b>  | 1 NO   |
| <b>Electrical lifetime:</b>                             | ≥50 000 cycles of operation at 250VAC, 2A, $\cos\phi$ 0.95,  |
| <b>Pollution degree:</b>                                | 3, according to EN IEC 60947-1   |
| <b>Switching voltage and switching current:</b>         | Switch rating AC with silver contact<br>Service category AC-15<br>according to EN IEC 60947-5-1<br>Voltage 125 VAC 250 VAC<br>Current 3 A 2 A<br>Switch rating DC with silver contact<br>Service category DC-13<br>according to EN IEC 60947-5-1<br>Voltage 250 VDC<br>Current 0.2 A |
| <b>Recommended minimum operational data:</b>            | Voltage 20 VAC/DC<br>Current 100 mA  |
| <b>Standards:</b>                                       | The switches comply with the "Standards for low-voltage switching devices" EN IEC 61058-1, EN IEC 60947-5-1  |
| <b>Thermal current I<sub>th</sub>:</b>                  | 5 A, according to EN / IEC 60947-5-1   |
| <b>Contact resistance:</b>                              | New state ≤ 50 mΩ, as per DIN/IEC 60512-2-4, measured at 100 mA, 10 V  |
| <b>Electric strength:</b>                               | 4000 VAC, 50 Hz, 1 minute, as per DIN / IEC 60512-2 between all terminals and earth  |
| <b>Overvoltage category:</b>                            | III, according to EN / IEC 60947-5-1   |
| <b>Protection class:</b>                                | II, according to EN / IEC 61058-1  |
| <b>Rated impulse withstand voltage U<sub>imp</sub>:</b> | 4 kV, according to EN/IEC 60947-5-1  |
| <b>Rated insulation voltage U<sub>i</sub>:</b>          | 320 VAC, according to EN / IEC 60947-5-1   |
| <b>Rated Operational Voltage U<sub>e</sub>:</b>         | 250 VAC/DC according to EN IEC 60947-1   |

### MECHANICAL CHARACTERISTIC

**Terminal:** Screw terminal

|                             |   |
|-----------------------------|---|
| <b>Weight:</b>              | 0.008 kg  |
| <b>Contact material:</b>    | Silver  |
| <b>Switching positions:</b> | 2 positions   |
| <b>Switching system:</b>    | Slow-make switching element   |
| <b>Switching system:</b>    | Double-break slow-make system, contact opening width 2 x 1.5 mm, with 2 x 2 contact points per switching element.<br>NC-contact elements in the slow-make elements fulfill requirements of switches with forced opening as per EN / IEC 60947-5-12.17.                  |
| <b>Wire cross section:</b>  | 1 wire flexible: 0.5 ... 0.75 mm <sup>2</sup><br>1 wire super flexible: 0.5 mm <sup>2</sup><br>1 wire rigid: 0.5 ... 1.5 mm <sup>2</sup><br>2 wires super flexible: 0.5 mm <sup>2</sup><br>2 wires flexible: 0.5 mm <sup>2</sup><br>2 wires rigid: 0.75 mm <sup>2</sup> |

## AMBIENT CONDITION

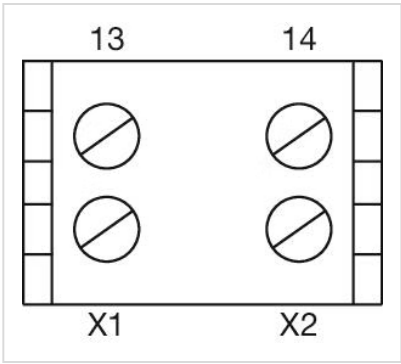
|                               |   |
|-------------------------------|---|
| <b>Vibration resistance:</b>  | Max. 100 m / s <sup>2</sup> from 10 Hz ... 500 Hz, (sinusoidal EN IEC 60068-2-6)  |
| <b>IP Protection:</b>         | IP40  |
| <b>Operating temperature:</b> | - 25 °C ... + 55 °C   |
| <b>Storage temperature:</b>   | - 40 °C ... + 85 °C   |
| <b>Climate resistance:</b>    | Damp heat, cyclic: 96 hours, + 25 °C/97 %, + 55 °C/93 % relative humidity, as per EN IEC 60068-2-30<br>Damp heat, steady: 56 days, + 40 °C/93 % relative humidity, according to EN IEC 60068-2-78<br>Rapid change of temperature: 100 cycles, - 40 °C ... + 80 °C, as per EN / IEC 60068-2-14 |
| <b>Shock resistance:</b>      | Max. 100 m / s <sup>2</sup> , pulse width, 3-axis (sinusoidal EN IEC 60068-2-27)  |

## CERTIFICATE

|                      |  |
|----------------------|--|
| <b>Approbations:</b> | CB (IEC 60947-5-1), CB (IEC 61058-1), CENELEC CCA-NTR (EN 60947-5-1), CQC, CSA, DNV, EAC, ENEC (EN 61058-1), NFF, SEV (EN / IEC 60947-5-1), UL |
| <b>Conformities:</b> | CE, UKCA, 2011 / 65 / EC (RoHS), 2014 / 35 / EU (LVD)  |

## OTHER

|                           |   |
|---------------------------|---|
| <b>Material:</b>          | Plastic, according to UL 94 V0  |
| <b>Short Description:</b> | Switching element, Slow-make switching element, 250 V AC/DC @ 5 A, Silver, 1 NO, Screw terminal |
| <b>Component layouts:</b> |   |



Wiring diagrams:

