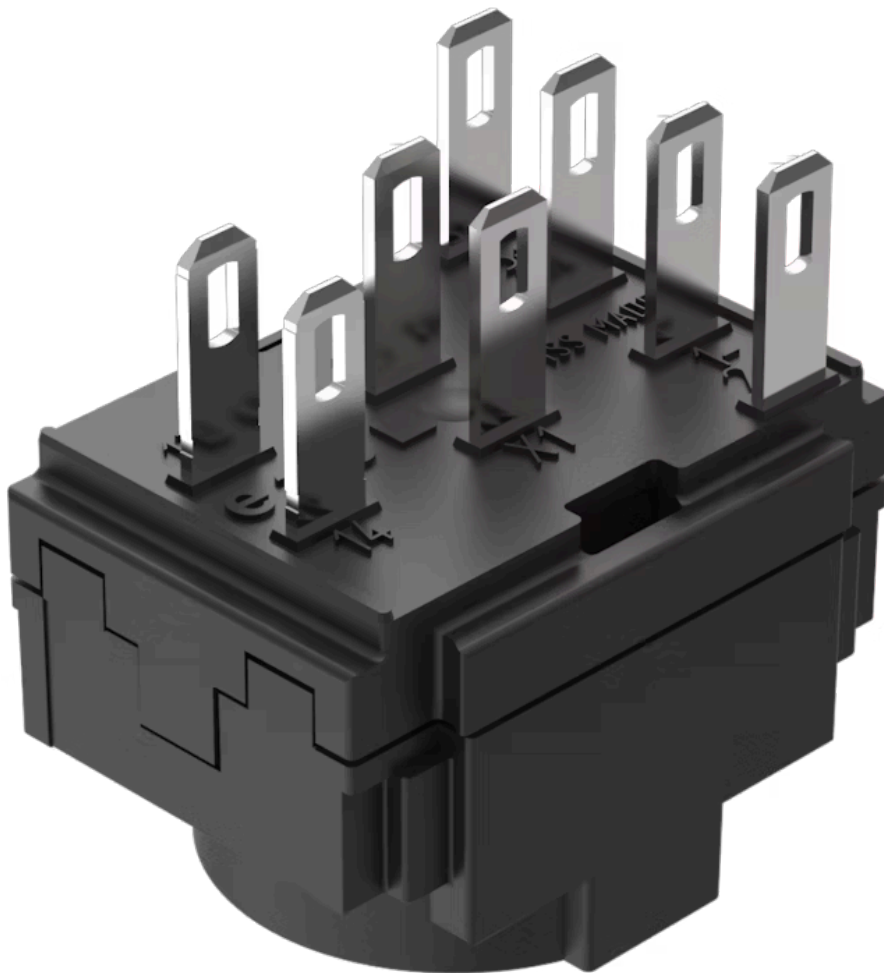


# Switching element

61-8490.12



<https://eao.com/p/61-8490.12>

Your product:



## 61-8490.12 Switching element

### ELECTRICAL CHARACTERISTICS

<b>Contacts:</b>	1 NC / 2 NO	
<b>Electrical lifetime:</b>	≥50 000 cycles of operation at 250VAC, 2A, $\cos\phi$ 0.95,	
<b>Pollution degree:</b>	3, according to EN IEC 60947-1	
<b>Switching voltage and switching current:</b>	Switch rating AC with silver contact or silver contact with gold plating Service category AC-15 according to EN IEC 60947-5-1 Voltage Current	125 VAC 2.5 A
	Switch rating DC with silver contact or silver contact with gold plating Service category DC-13 according to EN IEC 60947-5-1 Voltage Current	250 VDC 0.15 A
<b>Recommended minimum operational data:</b>	Voltage Current	20 VAC/DC 100 mA
<b>Standards:</b>	The switches comply with the "Standards for low-voltage switching devices" EN IEC 61058-1, EN IEC 60947-5-1	
<b>Thermal current I<sub>th</sub>:</b>	5 A	
<b>Electric strength:</b>	2500 VAC, 50 Hz, 1 minute, as per DIN / IEC 60512-2 between all terminals and earth	
<b>Overvoltage category:</b>	III, according to EN / IEC 60947-5-1	
<b>Protection class:</b>	II, according to EN / IEC 61058-1	
<b>Rated impulse withstand voltage U<sub>imp</sub>:</b>	4 kV, according to EN/IEC 60947-5-1	
<b>Rated insulation voltage U<sub>i</sub>:</b>	320 VAC, according to EN / IEC 60947-5-1	
<b>Rated Operational Voltage U<sub>e</sub>:</b>	250 VAC/DC according to EN IEC 60947-1	

### MECHANICAL CHARATERISTIC

**Terminal:** Plug-in terminal, 2.8 x 0.5 mm

<b>Weight:</b>	0.007 kg
<b>Contact material:</b>	Silver
<b>Switching positions:</b>	2 positions
<b>Switching system:</b>	Snap-action switching element
<b>Switching system:</b>	Self-cleaning, double-break snap-action switching system with contact opening width 2mm x 0.5mm (switch with small contact opening width as per EN IEC 61058-1). The switching elements are optionally equipped with the following switching functions: One to three normally open (NO) or normally closed (NC), or any combination of NO and NC plus connections for T1 3/4 LED or lamp. The number of switching elements cannot exceed three. The switching elements provided for the 3-position switch actuators are equipped with max. 2 NC or 2 NO or any combination. The number of switching elements cannot exceed two.
<b>Wire cross section:</b>	1 wire flexible: 0.5 ... 0.75 mm <sup>2</sup> 1 wire super flexible: 0.5 mm <sup>2</sup> 1 wire rigid: 0.5 ... 1.5 mm <sup>2</sup> 2 wires rigid: 0.75 mm <sup>2</sup> 2 wires flexible: 0.5 mm <sup>2</sup>

## AMBIENT CONDITION

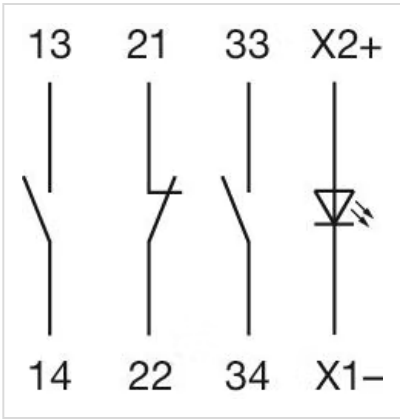
<b>Vibration resistance:</b>	Max. 100 m / s <sup>2</sup> from 10 Hz ... 500 Hz, (sinusoidal EN IEC 60068-2-6)
<b>Operating temperature:</b>	- 25 °C ... + 55 °C
<b>Storage temperature:</b>	- 40 °C ... + 85 °C
<b>Climate resistance:</b>	Damp heat, cyclic: 96 hours, + 25 °C/97 %, + 55 °C/93 % relative humidity, as per EN IEC 60068-2-30 Damp heat, steady: 56 days, + 40 °C/93 % relative humidity, according to EN IEC 60068-2-78 Rapid change of temperature: 100 cycles, - 40 °C ... + 80 °C, as per EN / IEC 60068-2-14
<b>Shock resistance:</b>	Max. 100 m / s <sup>2</sup> , pulse width, 3-axis (sinusoidal EN IEC 60068-2-27)

## CERTIFICATE

<b>Approbations:</b>	CB (IEC 60947-5-1), CB (IEC 61058-1), CENELEC CCA-NTR (EN 60947-5-1), CQC, CSA, DNV, EAC, ENEC (EN 61058-1), NFF, SEV (EN / IEC 60947-5-1), UL
<b>Conformities:</b>	CE, UKCA, 2011 / 65 / EC (RoHS), 2014 / 35 / EU (LVD)

## OTHER

<b>Material:</b>	Plastic, according to UL 94 V0
<b>Short Description:</b>	Switching element, Snap-action switching element, 150 V AC/DC @ 5 A, Silver, 1 NC / 2 NO, Plug-in terminal, 2.8 x 0.5 mm
<b>Hints:</b>	With lamp terminal
<b>Wiring diagrams:</b>	



Component layouts:

