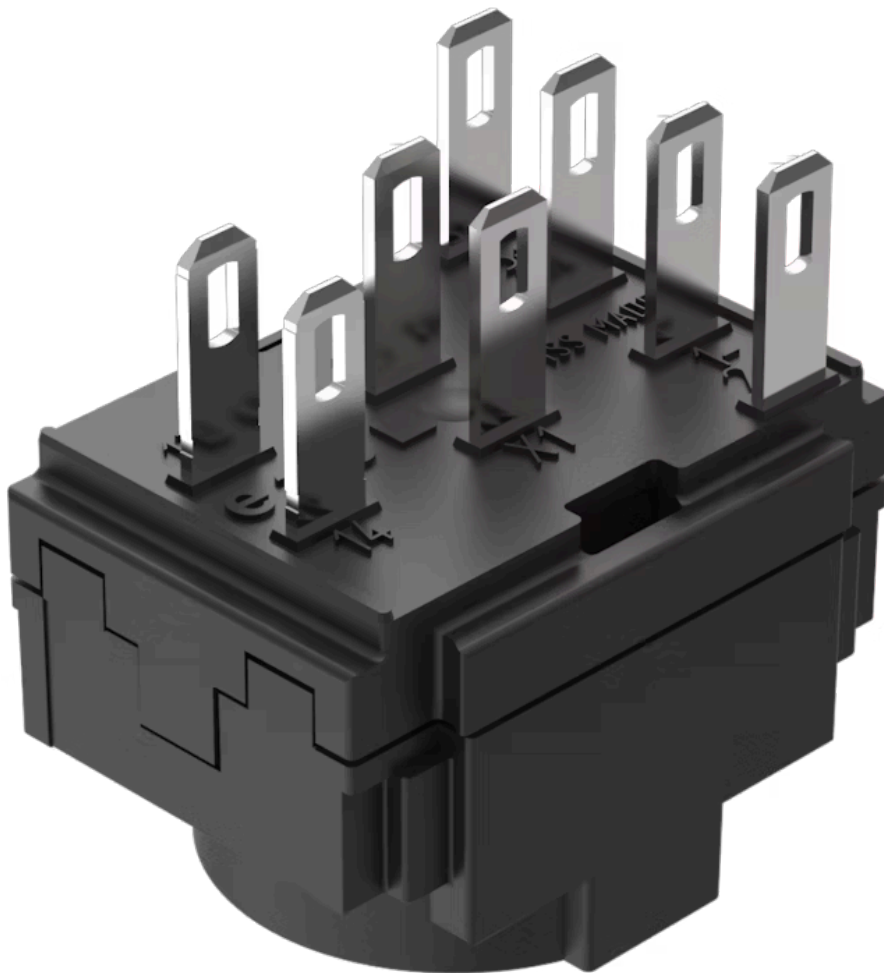


Switching element

61-8430.12



<https://eao.com/p/61-8430.12>

Your product:



61-8430.12 Switching element

ELECTRICAL CHARACTERISTICS

Contacts:	3 NO
Electrical lifetime:	≥50 000 cycles of operation at 250VAC, 2A, $\cos\phi$ 0.95,
Pollution degree:	3, according to EN IEC 60947-1
Switching voltage and switching current:	Switch rating AC with silver contact or silver contact with gold plating Service category AC-15 according to EN IEC 60947-5-1 Voltage 125 VAC Current 2.5 A Switch rating DC with silver contact or silver contact with gold plating Service category DC-13 according to EN IEC 60947-5-1 Voltage 250 VDC Current 0.15 A
Recommended minimum operational data:	Voltage 20 VAC/DC Current 100 mA
Standards:	The switches comply with the "Standards for low-voltage switching devices" EN IEC 61058-1, EN IEC 60947-5-1
Thermal current I_{th}:	3 A
Electric strength:	2500 VAC, 50 Hz, 1 minute, as per DIN / IEC 60512-2 between all terminals and earth
Overvoltage category:	III, according to EN / IEC 60947-5-1
Protection class:	II, according to EN / IEC 61058-1
Rated impulse withstand voltage U_{imp}:	4 kV, according to EN/IEC 60947-5-1
Rated insulation voltage U_i:	320 VAC, according to EN / IEC 60947-5-1
Rated Operational Voltage U_e:	150 VAC/DC (Switching elements with 3 contacts)

MECHANICAL CHARACTERISTIC

Terminal: Plug-in terminal, 2.8 x 0.5 mm

Weight:	0.007 kg
Contact material:	Silver
Switching positions:	2 positions
Switching system:	Snap-action switching element
Switching system:	Self-cleaning, double-break snap-action switching system with contact opening width 2mm x 0.5mm (switch with small contact opening width as per EN IEC 61058-1). The switching elements are optionally equipped with the following switching functions: One to three normally open (NO) or normally closed (NC), or any combination of NO and NC plus connections for T1 3/4 LED or lamp. The number of switching elements cannot exceed three. The switching elements provided for the 3-position switch actuators are equipped with max. 2 NC or 2 NO or any combination. The number of switching elements cannot exceed two.
Wire cross section:	1 wire flexible: 0.5 ... 0.75 mm ² 1 wire super flexible: 0.5 mm ² 1 wire rigid: 0.5 ... 1.5 mm ² 2 wires rigid: 0.75 mm ² 2 wires flexible: 0.5 mm ²

AMBIENT CONDITION

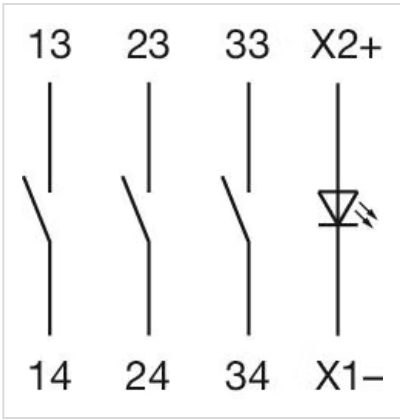
Shock resistance:	Max. 100 m / s ² , pulse width, 3-axis (sinusoidal EN IEC 60068-2-27)
Operating temperature:	- 25 °C ... + 55 °C
Storage temperature:	- 40 °C ... + 85 °C
Climate resistance:	Damp heat, cyclic: 96 hours, + 25 °C/97 %, + 55 °C/93 % relative humidity, as per EN IEC 60068-2-30 Damp heat, steady: 56 days, + 40 °C/93 % relative humidity, according to EN IEC 60068-2-78 Rapid change of temperature: 100 cycles, - 40 °C ... + 80 °C, as per EN / IEC 60068-2-14
Vibration resistance:	Max. 100 m / s ² from 10 Hz ... 500 Hz, (sinusoidal EN IEC 60068-2-6)

CERTIFICATE

Approbations:	CB (IEC 60947-5-1), CB (IEC 61058-1), CENELEC CCA-NTR (EN 60947-5-1), CQC, CSA, DNV, EAC, ENEC (EN 61058-1), NFF, SEV (EN / IEC 60947-5-1), UL
Conformities:	CE, UKCA, 2011 / 65 / EC (RoHS), 2014 / 35 / EU (LVD)

OTHER

Material:	Plastic, according to UL 94 V0
Short Description:	Switching element, Snap-action switching element, 150 V AC/DC @ 3 A, Silver, 3 NO, Plug-in terminal, 2.8 x 0.5 mm
Hints:	With lamp terminal
Wiring diagrams:	



Component layouts:

