

Actuator

61-1220.0



<https://eao.com/p/61-1220.0>

Your product:



61-1220.0 Actuator

FRONT

Front dimension:	18 mm x 18 mm
Front form:	square
Front bezel colour:	Black
Front bezel material:	Plastic

MOUNTING

Mounting cut-out:	Ø 16 mm
--------------------------	---------

OPERATING-/INDICATION PART

Lens illumination:	illuminative
---------------------------	--------------

MECHANICAL CHARACTERISTIC

Operating Travel:	3 mm
Weight:	0.005 kg
Switching action:	Maintained
Mechanical lifetime:	According to DIN/IEC 60512-5-6 and EN/IEC 60947-5-1, 1 Mio. cycles of operation
Operating force:	3 N ... 5 N snap-action switching element, 3.5 ... 11 N slow-make switching element
Tightening torque:	Max. 0.5 Nm

AMBIENT CONDITION

IP Protection:	IP40 rear side, according to EN IEC 60529, IP67 front side, according to EN IEC 60529
-----------------------	---

Storage temperature: - 40 °C ... + 85 °C

OTHER

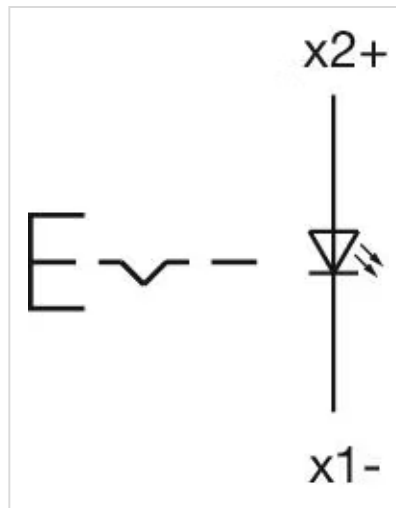
Housing colour: Black

Housing material: Plastic, according to UL 94 V0, self-extinguishing

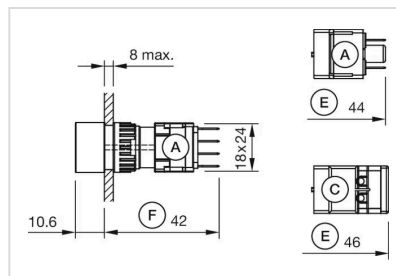
Internal size: 15,3 mm x 15,3 mm

Short Description: Actuator, Ø 16 mm, 18 mm x 18 mm, illuminative, square, Black, Plastic, Maintained

Wiring diagrams:



Dimension drawings:



Mounting cut-outs:

