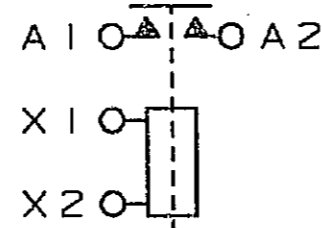


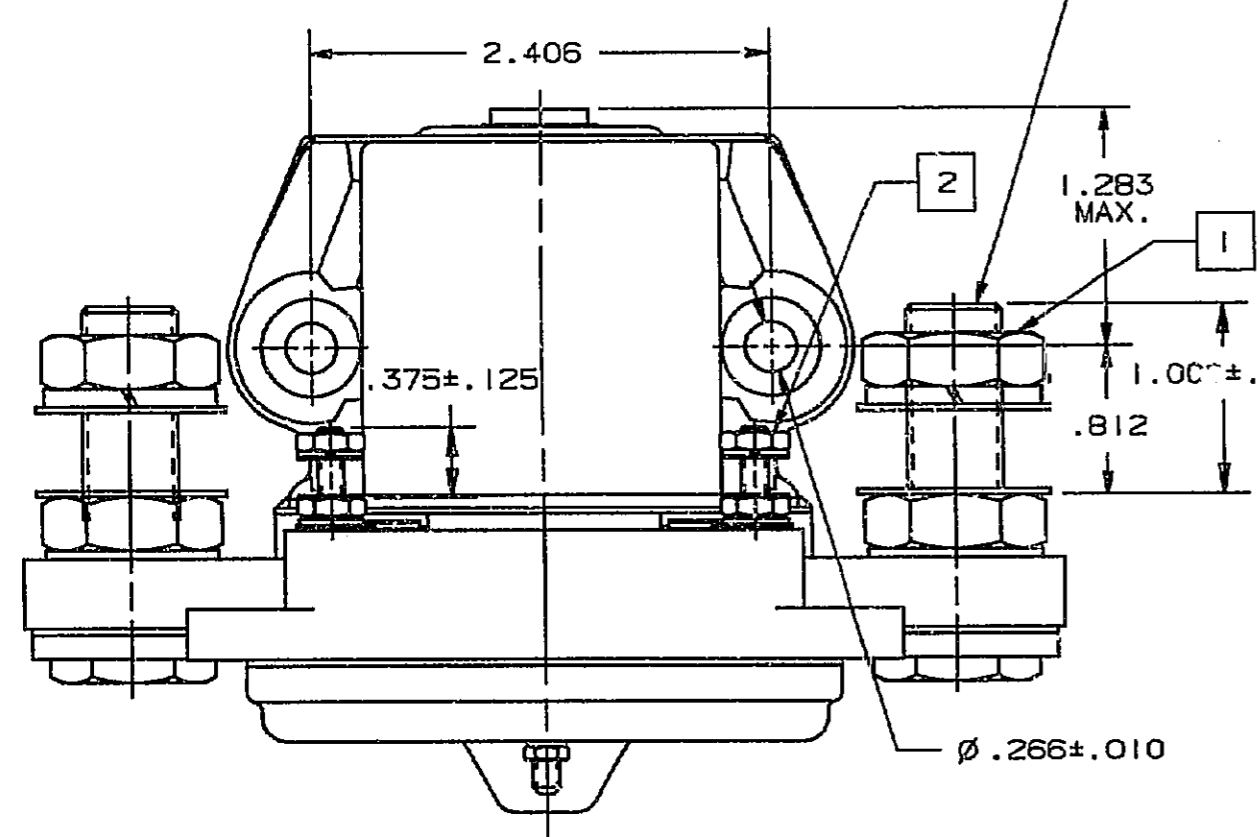
NOTES:

- 1. TORQUE 90 LB. IN. MAX. 2-PLACES.
- 2. TORQUE 6 LB. IN. MAX. 2-PLACES.

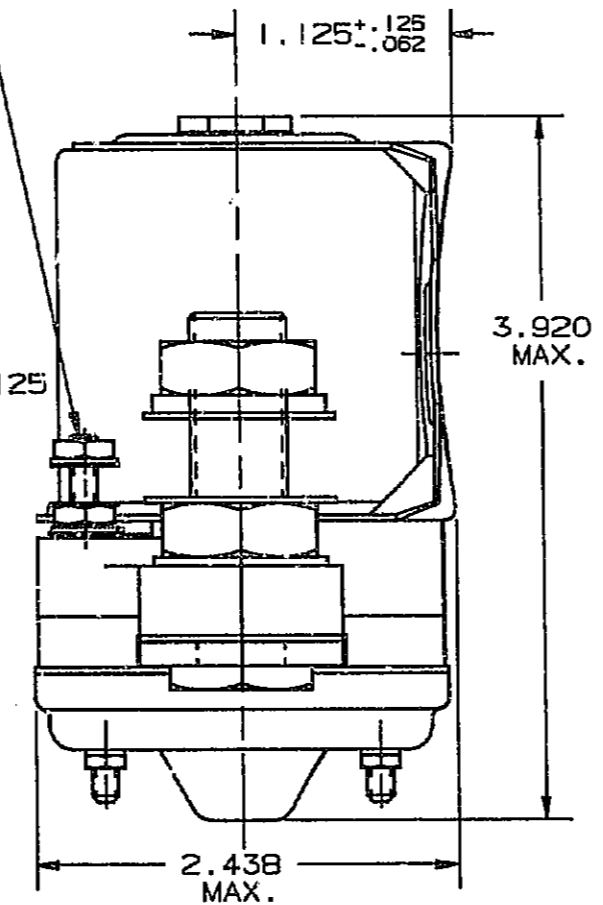
CIRCUIT



STUD, THD .500-20 UNF-2A



STUD, THD .138-32 UNC-2A



DETAIL MEASUREMENTS: (A) CONSTRUCTION - DUST SEALED - INSPECTABLE	MIL-R-6106
(B) POWER CONTACTS - CONFIGURATION - VOLTAGE - LOAD RATINGS - RESISTIVE - NO - INDUCTIVE - NO - MOTOR - NO - MINIMUM CURRENT - RUPTURE (CONTACT DROP - MAX.) - INITIAL - AFTER LIFE TEST	28V DC 400 AMPS DC 100 AMPS DC 400 AMPS DC 40 AMPS 4,000 AMPS 0.150V 0.175V
(C) LIFE - ELECTRICAL - MECHANICAL	50,000 CYCLES 100,000 CYCLES
(D) COIL DATA - DUTY CYCLE - COIL RESISTANCE AT 25°C - CONTINUOUS VOLTAGE (MAX.) - STEADY STATE	CONTINUOUS 60 OHMS ±10% 30V DC .55 AMP MAX.
(E) OPERATING CHARACTERISTICS (MAX. PU VOLTAGE) - NORMAL (-55°C TO +71°C) - HIGH TEMP. TEST - CONTINUOUS CURRENT TEST - DROPOUT VOLTAGE (-55°C TO +71°C) - OPERATE TIME AT 23V DC & 25°C (MAX.) - RELEASE TIME (MAX.) - CONTACT BOUNCE, (MAX.) NO	18V DC 20V DC 21.5V DC 7 +0 -5.5V DC 40 MILLISECONDS 15 MILLISECONDS 5 MILLISECONDS
(F) DIELECTRIC AND INSULATION RESISTANCE - INSUL. RESIST. (MIN.) - INITIAL - AFTER LIFE OR ENV. TESTS - DIELECTRIC STRENGTH-VRMS-SEA LEVEL 3.5 SEC. - COIL TO CASE - ACROSS OPEN POWER CONTACTS - ALL OTHER POINTS - DIELECTRIC STRENGTH-VRMS-50,000 FT. 1 MIN. - COIL TO CASE - ALL OTHER POINTS	100 MEGOHMS 50 MEGOHMS 1,250 (INITIAL) 1,000 (AFTER LIFE TESTS) 1,250 (INITIAL) 625 (AFTER LIFE TESTS) 1,800 (INITIAL) 1,350 (AFTER LIFE TESTS) 500 (INITIAL AND AFTER LIFE TESTS) 700 (INITIAL AND AFTER LIFE TESTS)
(G) ENVIRONMENTAL CHARACTERISTICS - TEMPERATURE RANGE - ALTITUDE RATING (MAX.) - SHOCK - 1/2 SINE - DURATION - MAX DURATION CONTACT OPENING - VIBRATION-SINUSOIDAL-5-10 Hz -10-55 Hz -55-500 Hz - SALT SPRAY - HUMIDITY - ACCELERATION - SAND AND DUST	-54°C TO +74°C 50,000 FT. 25 G'S (N.O.) 15 G'S (N.C.) 6-9 MILLISECONDS 2 MILLISECONDS 0.03" DA 0.06" DA 2 G'S PER SPEC. PER SPEC. 10 G'S PER SPEC.
(H) MAXIMUM WEIGHT W/HARDWARE	2.6 LBS.

REV. 3-3-97 VP PLS RLR ECO #42-97 M	CAD DRAWING NO MANUAL CHGS.	PROJECT NO. DV39-5609-10	BASIC SPECS. SUMMARY ANSI Y14.5M-1982 MS24185-D2 EATON REF. DWG. 10-902	DESCRIPTION: 400 AMP SPST TYPE II RELAY
DESCR: PARA (E), 40 MILLISEC. WAS 60, PARA (F), 100 MEGOHMS WAS 200, 50 MEGOHMS WAS 100.		SURFACE COATING	ALL DIMENSIONS IN INCHES DECIMAL TOLERANCES .XX = ±.06 .XXX = ±.031 ANG. = ±	DO NOT SCALE DRAWING. WORK ACCORDING TO DIMENSIONS. 50-2500 SHALL APPLY UNLESS OTHERWISE SPECIFIED. DIMENSIONS BEFORE COATING ARE SPECIFIED-ALLOWANCES HAVE BEEN MADE FOR COATINGS EXCEPT ON THREADS.
FSCM 81640		SCALE: NONE	DR. G.F.LAMBOY 1-31-52 CHK. L.SOTO 3-13-52 APP. E.C.PETERSON 3-31-52	THIRD ANGLE PROJECTION
				SIZE GRADE B 6041H205 SHEET 1 OF 1