

# 602 SERIES LIGHT PIPE PANEL INDICATOR



## FEATURES

- Ø5.0mm mounting
- Nickel plated brass housing
- Sealed to IP67 - weatherproof
- Wide viewing angle - water clear lens
- Sleeve included on longer lengths

## BENEFITS

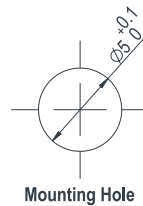
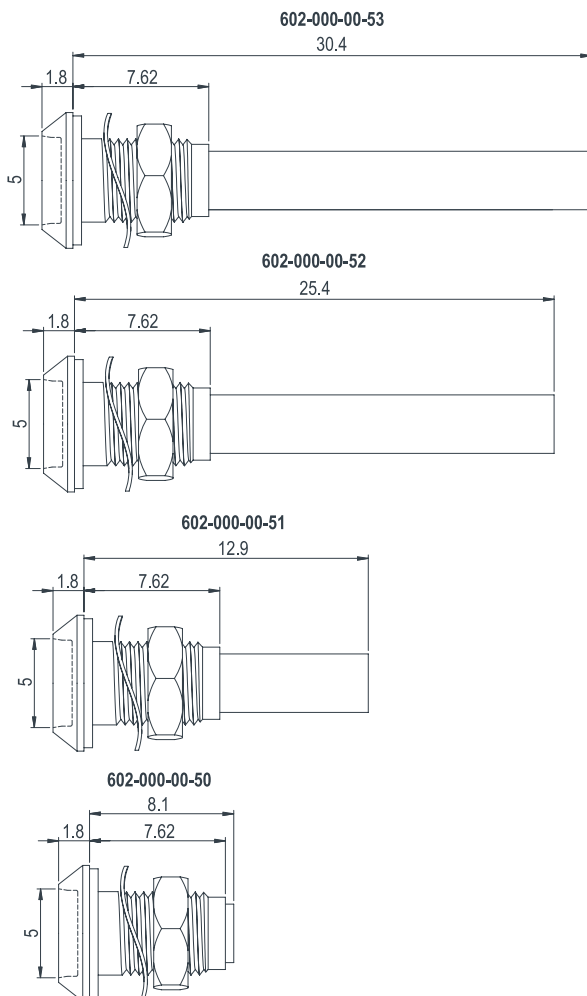
- Our smallest mounting size in a metallic housing
- Suitable for industrial applications
- Suitable for external applications
- Water clear lens gives clear 'off' state
- Sleeve prevents light bleeding to adjacent indicators
- Suitable for status panel indication
- Outstanding reliability
- Vandal resistant

Marl Part Number	Length (typical)	Sleeve included
602-000-00-50	8.1mm	No
602-000-00-51	12.9mm	Yes
602-000-00-52	25.4mm	Yes
602-000-00-53	30.4mm	Yes

This is a light pipe and housing only - LED not included

## TECHNICAL DRAWING

Dimensions in mm (typical). Not to scale. Mounting hole to be clean and burr free.



## MATERIALS

<b>Body</b>	Bright Nickel Plated Brass
<b>Nut</b>	Bright Nickel Plated Brass
<b>Panel Seal</b>	Viton™
<b>Fresnel Lens</b>	Polycarbonate UL94 HB
<b>Lock Washer</b>	Beryllium Copper
<b>Light Pipe</b>	Polycarbonate UL94 V-0

## MOUNTING SPECIFICATION

Series	Panel Cutout	Nut Mounting Torque	Min. Mounting Centres	Min - Max. Panel Thickness
602	5.0	0.35	10.0	1.5 - 5.0
	mm	Nm	mm	mm

To order please contact us on +44 (0) 1229 582 430  
 F +44 (0) 1229 585 155 | E [sales@marl.co.uk](mailto:sales@marl.co.uk) | [www.leds.co.uk](http://www.leds.co.uk)  
 in company/marl-international-limited

