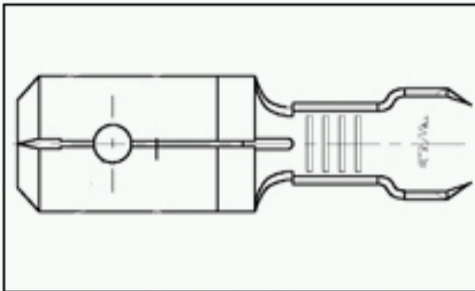


## 60006-2 Product Details

[Live Product Chat](#)



### 60006-2

TE Part Number: 60006-2

[Active](#)

[Add to Part List](#)

### Quick Disconnect Tabs, Tab Adapters & Tab Caps

[Always EU RoHS/ELV Compliant](#) ([Statement of Compliance](#))

#### Product Highlights:

- Tab
- Tab Type = Wire Crimp
- Uninsulated
- Tab Fit = 6.35 x 0.80 mm
- Brass Material

[View all Features](#) | [Find Similar Products](#)

### Quick Links

- ▶ [Check Pricing & Availability](#)
- ▶ [Search for Tooling](#)
- ▶ [Product Feature Selector](#)
- ▶ [Contact Us About This Product](#)
- ▶ [Request Samples](#)

**NEW!**

### Documentation & Additional Information

Documents are temporarily unavailable. We are working hard to correct the problem. Please try again later.

#### Additional Information:

- [Product Line Information](#)

#### Related Products:

- [Tooling](#)

### Product Features (Please use the Product Drawing for all design activity)

#### Product Type Features:

- [Product Type](#) = Tab
- [Insulation](#) = No
- [Tab Fit \(mm \[in\]\)](#) = 6.35 x 0.80 [.250 x .031]
- [Material](#) = Brass
- [Insulation Diameter \(mm \[in\]\)](#) = 2.03-3.05 [.080-.120]
- [Finish](#) = Tin
- [Wire/Cable Type](#) = Regular Wire
- [Mount Angle](#) = Straight
- [Insulation Support](#) = Without

#### Body Related Features:

- [Tab Type](#) = Wire Crimp
- [Wire Range \(mm \[AWG\]\)](#) = 0.30-0.90<sup>2</sup> [22-18]
- [Stud Hole](#) = Without
- [Tab Style](#) = Straight

#### Industry Standards:

- [RoHS/ELV Compliance](#) = RoHS compliant, ELV compliant
- [Lead Free Solder Processes](#) = Not relevant for lead free process
- [RoHS/ELV Compliance History](#) = Always was RoHS compliant

#### Packaging Related Features:

- [Packaging Method](#) = Loose Piece

#### Other:

- [Brand](#) = AMP

[Provide Website Feedback](#) | [Need Help?](#)