



Kontaktbuchse 1 mm geschlitzt

Einsatzbereich: - 623 Stecker, 10-polig
- 923 Stecker, 8 und 9-polig
- 723 htec
- 740 htec

TE Teile Nr.: 60.0216-011-P00
IC Ref. Nr.: 60.216.11

Elektrische Werte
 Bemessungsstrom
 Durchgangswiderstand

bis 14 A*
< 5 mOhm

Werkstoff
 Kontakt

Messing, vergoldet

Anschluss

Anschlussart/ -bereich
 max. Litzenaußendurchmesser
 Abisolierlänge
 Crimpeinstellungen

Crimp/ 0,5 - 1,5 mm²
 ø2,45 mm
 5 mm
 sind individuell zu wählen

Mechanische Werte
 Steckzyklen

500

Werkzeuge (nicht im Lieferumfang enthalten)

digitale Crimpzange

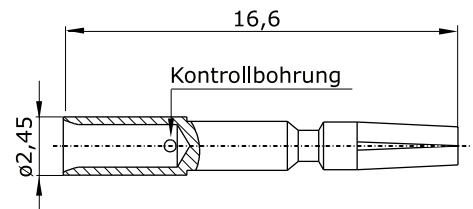
TE Teile Nr.: C0-0236-000-P00
IC Ref. Nr.: C0.236.00

analoge Crimpzange

TE Teile Nr.: C0-0201-000-P00
IC Ref. Nr.: C0.201.00

(Positioniereinsatz für 1 mm Kontakte

TE Teile Nr.: C0-0252-000-000
IC Ref. Nr.: C0.252.00)



Hauptabmessungen
 Kontaktbuchse





Contact Socket 1 mm slotted

application area: - 623 plug, 10-pin
- 923 plug, 8 and 9-pin
- 723 htec
- 740 htec

TE part number: 60-0216-011-P00
IC reference number: 60.216.11

Electrical Data

nominal current max 14 A*
contact resistance < 5 mOhm

Material

contact brass, gold plated

Termination

cross-section crimp/ 0.5 - 1.5 mm²
max. outer wire diameter ø2.45 mm
stripping length 5 mm
crimp settings select individually

Mechanical Data

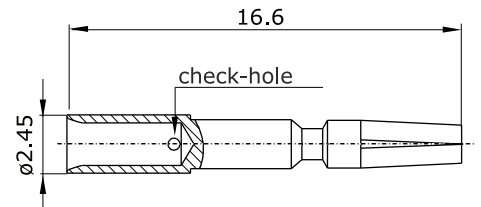
mating cycles 500

Tools (not included in delivery)

digitale crimping tool TE part. no.: C0-0236-000-P00
IC ref. no.: C0.236.00

(analog crimping tool TE part. no.: C0-0201-000-P00
IC ref. no.: C0.201.00

positioning insert for 1 mm contacts TE part. no.: C0-0252-000-000
IC ref. no.: C0.252.00)



Main Dimensions
contact socket

Y6-C144-000-0EN issued: 21.05.2010/Sa; modified: 17.10.2018/KC

© 2018 TE Connectivity

TE Connectivity, TE connectivity (logo), intercontec (logo) and speedtec are trademarks.

While TE Connectivity (TE) has made every reasonable effort to ensure the accuracy of the information in this presentation, TE does not guarantee that it is error-free, nor does TE make any other representation, warranty or guarantee that the information is accurate, correct, reliable or current. TE reserves the right to make any adjustments to the information contained herein at any time without notice. TE expressly disclaims all implied warranties regarding the information contained herein, including, but not limited to, any implied warranties of merchantability or fitness for a particular purpose. The dimensions in this article are for reference purposes only and are subject to change without notice. Specifications are subject to change without notice. Consult TE for the latest dimensions and design specifications.



* for max. wire cross-section