

Residual current operated circuit breaker, 4-pole, type A, In: 80 A, 300 mA, Un AC: 400 V, SIGRES (harsh ambient conditions)



Model	
Product brand name	SETRON
Product designation	RCCB
Design of the product	Instantaneous
Product variations	SIGRES (harsh ambient conditions)
General technical data	
Number of poles	4
Size of installation devices / acc. to DIN 43880	1
Protection against electrical shock	Finger and back-of-hand safe
Short-circuit current / of series fuse / maximum permissible	100 A
Short-circuit current rating	10 kA
circuit-breaker / Design	5SV3
Mechanical service life (switching cycles) / typical	10 000
Switching function / short-term delayed	No
Overvoltage category	III
Supply voltage	
Operating current / at AC / rated value	80 A

Supply voltage	
<ul style="list-style-type: none"> • at AC / rated value • for testing equipment / minimum 	230/400 V 100 V
Operating frequency	50 Hz
Supply voltage frequency	
<ul style="list-style-type: none"> • rated value 	50 Hz

Protection class	
Protection class IP	IP20, if the distribution board is installed, with connected conductors

Switching capacity	
Switching capacity current / according to IEC 61008-1 / rated value	0.8 kA

Dissipation	
Power loss [W] / for rated value of the current / at AC / in hot operating state / per pole	4.2 W

Current	
Tripping residual current / rated value	300 mA
Tripping residual / rated value / derated current	
<ul style="list-style-type: none"> • at 40 Cel • at 45 Cel • at 50 Cel • at 55 Cel • at 60 Cel • at 65 Cel • at 70 Cel 	80 A 77.57 A 74.59 A 70.22 A 64.47 A 57.35 A 48.84 A
Type of fault current	A
I ² t-value / permissible	110 000 A ² ·s
Surge current resistance / rated value	1 kA

Product details	
Product feature / silicon-free	Yes
Product extension / can be installed / supplementary devices	Yes

Connections	
Connectable conductor cross-section / solid	
<ul style="list-style-type: none"> • minimum • maximum 	0.75 mm ² 35 mm ²
Connectable conductor cross-section / stranded	
<ul style="list-style-type: none"> • minimum • maximum 	0.75 mm ² 35 mm ²
Tightening torque / with screw-type terminals	
<ul style="list-style-type: none"> • minimum 	2.5 N·m

• maximum	3 N·m
Position / of power supply cord	top or bottom

Mechanical Design

Height	90 mm
Width	72 mm
Depth	70 mm
Installation depth	70 mm
Number of width units	4
Mounting type	DIN rail (REG)
Mounting position	any

Environmental conditions

Ambient temperature	
• minimum	-25 °C
• maximum	45 °C
Ambient temperature / during storage	
• minimum permissible	-40 °C
• maximum permissible	75 °C

Certificates

Reference code	
• acc. to DIN EN 61346-2	F
• acc. to DIN EN 81346-2	F

General Product Approval	Declaration of Conformity	Test Certificates
--------------------------	---------------------------	-------------------



[Miscellaneous](#)



[Miscellaneous](#)

other	Railway
Miscellaneous	Confirmation
Confirmation	Vibration and Shock
Confirmation	Confirmation

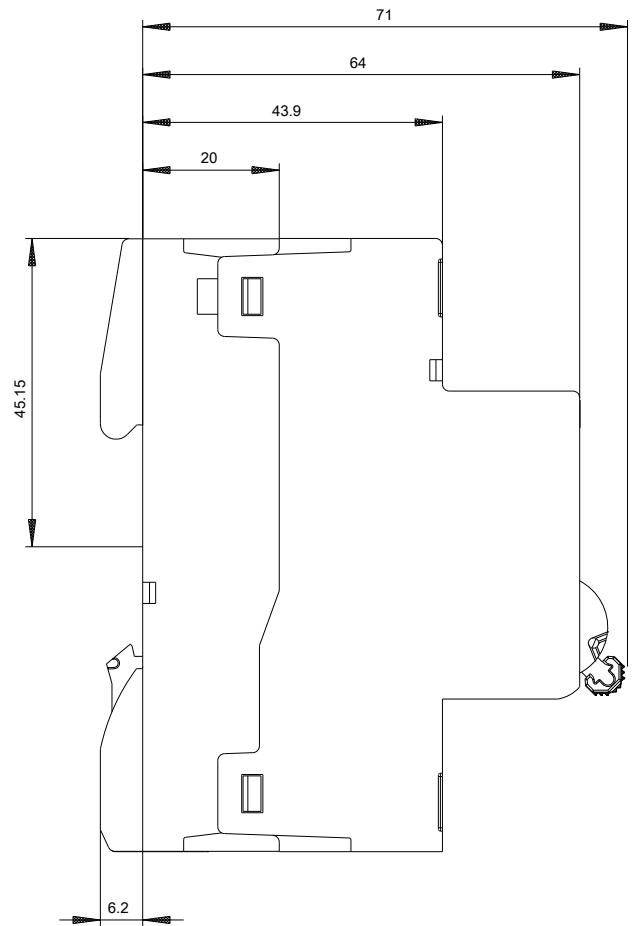
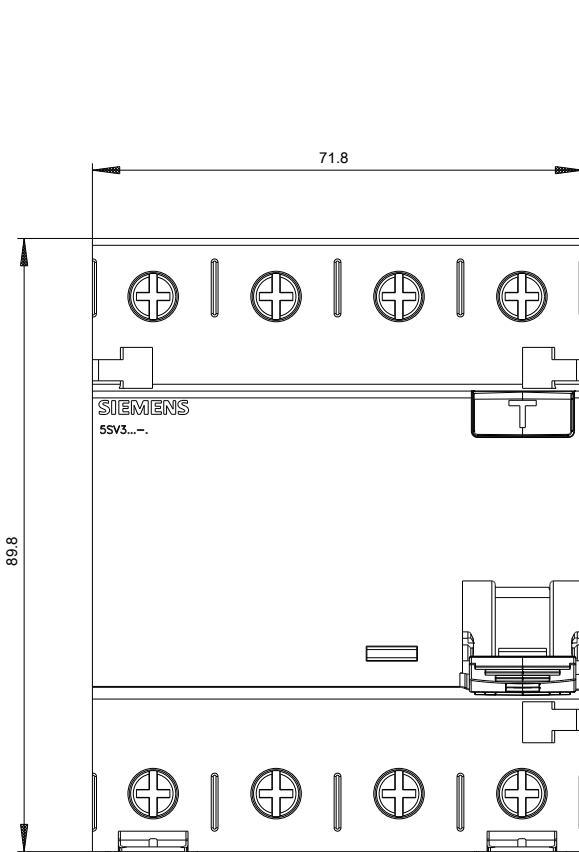
Further information

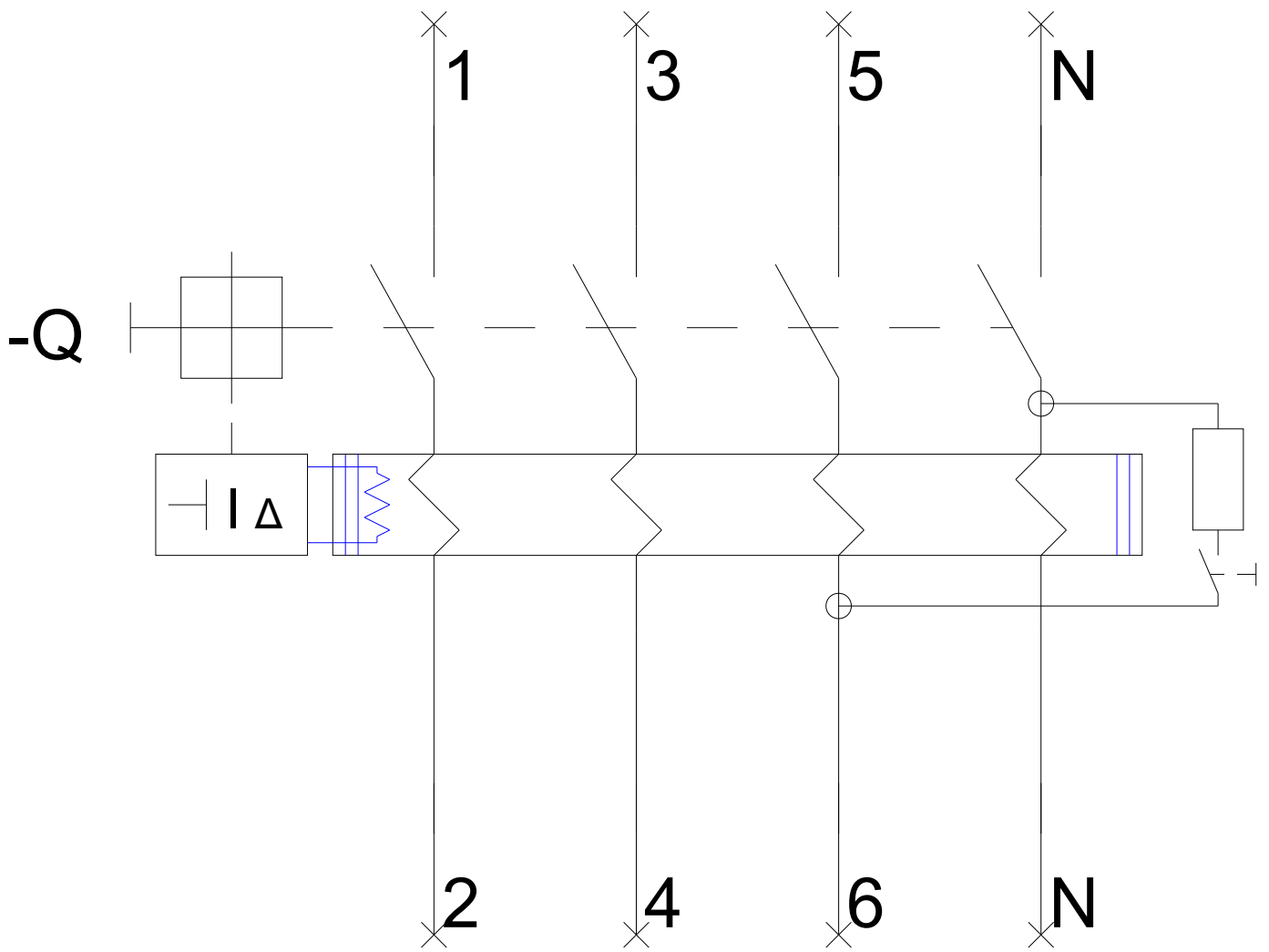
Information- and Downloadcenter (Catalogs, Brochures,...)
<http://www.siemens.com/lowvoltage/catalogs>

Industry Mall (Online ordering system)
<https://mall.industry.siemens.com/mall/en/en/Catalog/product?mlfb=5SV3647-6KK12>

Service&Support (Manuals, Certificates, Characteristics, FAQs,...)
<https://support.industry.siemens.com/cs/ww/en/ps/5SV3647-6KK12>

Image database (product images, 2D dimension drawings, 3D models, device circuit diagrams, ...)
http://www.automation.siemens.com/bilddb/cax_en.aspx?mlfb=5SV3647-6KK12





-CB

