

Residual current operated circuit breaker, 4-pole, type A, In: 40 A, 30 mA, Un AC: 400 V



Model	
product brand name	SENTRON
product designation	RCCB
design of the product	Instantaneous
General technical data	
number of poles	4
size of installation devices / acc. to DIN 43880	1
mechanical service life (switching cycles) / typical	10 000
short-circuit current / of series fuse / maximum permissible	80 A
short-circuit current rating	10 kA
switching function / short-term delayed	No
overvoltage category	III
Supply voltage	
operational current / at AC / rated value	40 A
<ul style="list-style-type: none"> supply voltage / at AC / rated value 	400 V
<ul style="list-style-type: none"> supply voltage / for testing equipment / minimum 	195 V

operating frequency	50 Hz
supply voltage frequency	
• rated value	50 Hz

Protection class	
protection class IP	IP20, if the distribution board is installed, with connected conductors

Switching capacity	
switching capacity current	
• acc. to EN 60898 / rated value	0.8 kA
• according to IEC 61008-1 / rated value	0.8 kA

Dissipation	
power loss [W]	
• for rated value of the current / at AC / in hot operating state / per pole	3.9 W
• maximum	11.7 W

Current	
tripping fault current / rated value	30 mA
residual current type	A
let-through current / permissible	5 200 kA
I ² t value / permissible	58 000 A ² ·s
surge current resistance / rated value	1 kA
operational current	
• at 40 °C / rated value	40 A
• at 45 °C / rated value	38.1 A
• at 50 °C / rated value	35.59 A
• at 55 °C / rated value	32.29 A
• at 60 °C / rated value	28.19 A
• at 65 °C / rated value	23.3 A
• at 70 °C / rated value	17.62 A

Product details	
product feature / silicon-free	Yes
product extension / installable / supplementary devices	Yes

Connections	
connectable conductor cross-section / solid	
• minimum	0.75 mm ²
• maximum	35 mm ²
connectable conductor cross-section / stranded	
• minimum	0.75 mm ²
• maximum	35 mm ²

tightening torque / with screw-type terminals	
<ul style="list-style-type: none"> • minimum • maximum 	<p>2.5 N·m</p> <p>3 N·m</p>
position / of power supply cord	top or bottom

Mechanical Design

height	90 mm
width	72 mm
depth	70 mm
installation depth	70 mm
number of modular width units	4
fastening method	DIN rail (REG)
mounting position	any
net weight	361 g

Environmental conditions

ambient temperature / during operation	
<ul style="list-style-type: none"> • minimum • maximum 	<p>-25 °C</p> <p>45 °C</p>
ambient temperature / during storage	
<ul style="list-style-type: none"> • minimum permissible • maximum permissible 	<p>-40 °C</p> <p>75 °C</p>
number of test cycles / for environmental testing / acc. to IEC 60068-2-30	28

Certificates

reference code	
<ul style="list-style-type: none"> • acc. to DIN EN 61346-2 • acc. to IEC 81346-2 	<p>F</p> <p>F</p>

General Product Approval

EMC



[Miscellaneous](#)



Declaration of Conformity

other

Railway



[Miscellaneous](#)

[Vibration and Shock](#)

[Confirmation](#)

Further information

Information- and Downloadcenter (Catalogs, Brochures,...)

<http://www.siemens.com/lowvoltage/catalogs>

Industry Mall (Online ordering system)

<https://mall.industry.siemens.com/mall/en/en/Catalog/product?mlfb=5SV3344-6>

Service&Support (Manuals, Certificates, Characteristics, FAQs,...)

<https://support.industry.siemens.com/cs/ww/en/ps/5SV3344-6>

Image database (product images, 2D dimension drawings, 3D models, device circuit diagrams, ...)

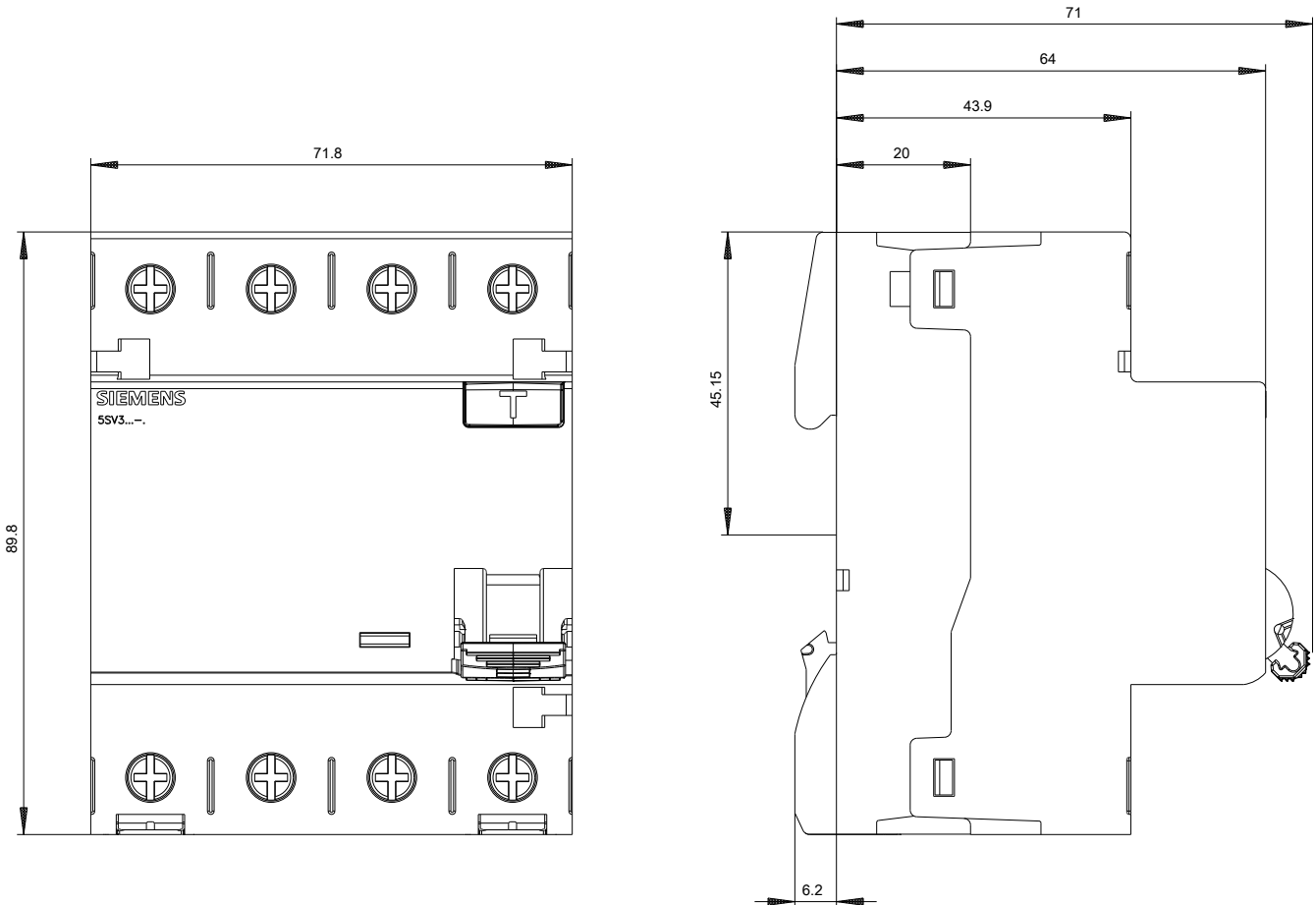
http://www.automation.siemens.com/bilddb/cax_en.aspx?mlfb=5SV3344-6

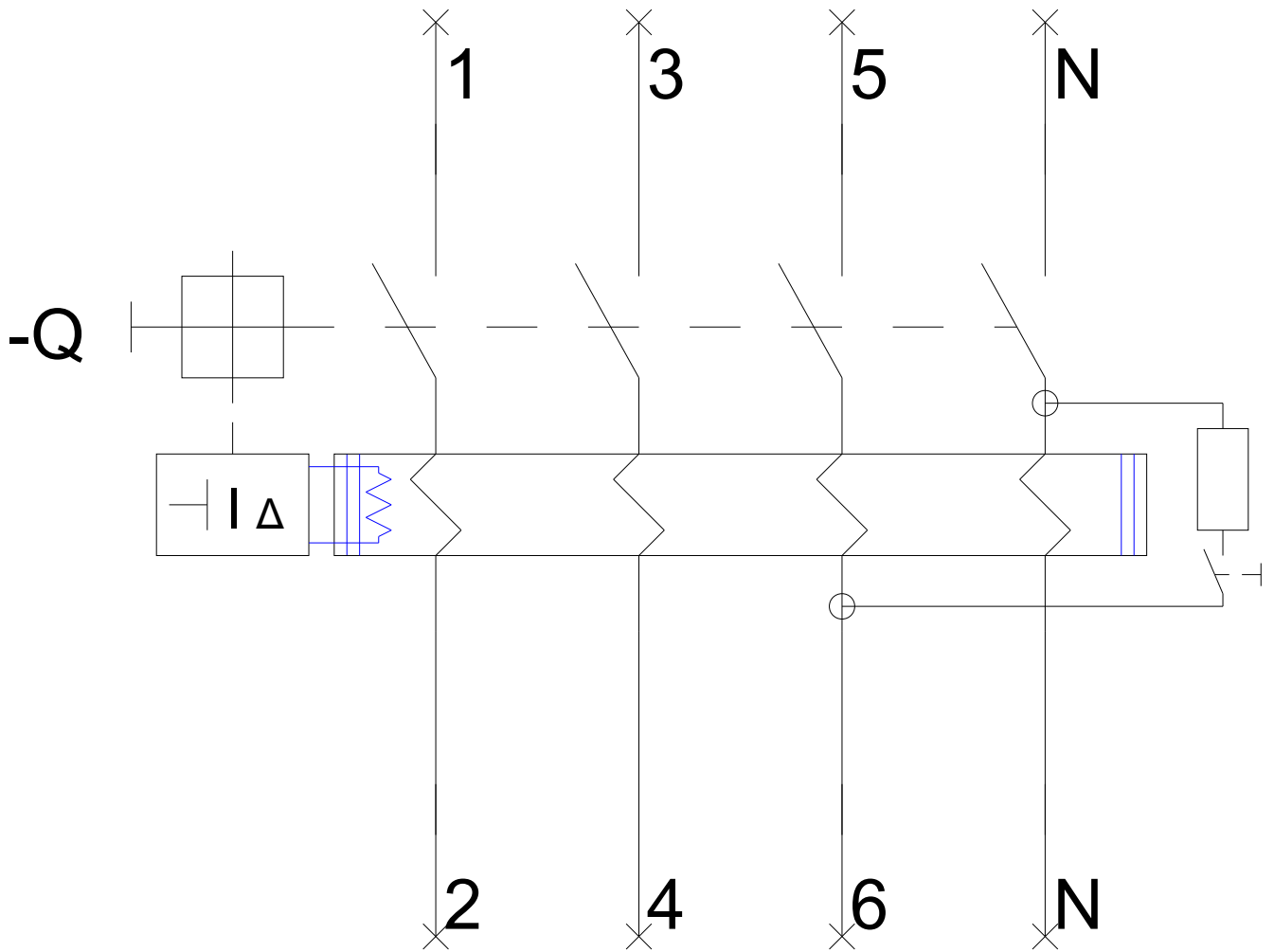
CAX-Online-Generator

<http://www.siemens.com/cax>

Tender specifications

<http://www.siemens.com/specifications>





-CB

