

Residual current operated circuit breaker, 4-pole, type F, short-time delayed, In: 25 A, 30 mA, Un AC: 400 V



Model	
Product brand name	SETRON
Product designation	RCCB
Design of the product	Short-time delayed
General technical data	
Number of poles	4
Size of installation devices / acc. to DIN 43880	1
Protection against electrical shock	Finger and back-of-hand safe
Short-circuit current / of series fuse / maximum permissible	100 A
Short-circuit current rating	10 kA
circuit-breaker / Design	5SV3
Mechanical service life (switching cycles) / typical	10 000
Switching function / short-term delayed	Yes
Overvoltage category	III
Supply voltage	
Operating current / at AC / rated value	25 A
Supply voltage	

<ul style="list-style-type: none"> <li>• at AC / rated value</li> </ul>	400 V
<ul style="list-style-type: none"> <li>• for testing equipment / minimum</li> </ul>	195 V
Supply voltage frequency	
<ul style="list-style-type: none"> <li>• rated value</li> </ul>	50 Hz

#### Protection class

Protection class IP	IP20, if the distribution board is installed, with connected conductors
---------------------	---

#### Switching capacity

Switching capacity current / according to IEC 61008-1 / rated value	0.8 kA
---	--------

#### Dissipation

Power loss [W] / for rated value of the current / at AC / in hot operating state / per pole	0.8 W
---	-------

#### Current

Tripping residual current / rated value	30 mA
Tripping residual / rated value / derated current	
<ul style="list-style-type: none"> <li>• at 40 Cel</li> </ul>	25 A
<ul style="list-style-type: none"> <li>• at 45 Cel</li> </ul>	25 A
<ul style="list-style-type: none"> <li>• at 50 Cel</li> </ul>	25 A
<ul style="list-style-type: none"> <li>• at 55 Cel</li> </ul>	25 A
<ul style="list-style-type: none"> <li>• at 60 Cel</li> </ul>	25 A
<ul style="list-style-type: none"> <li>• at 65 Cel</li> </ul>	25 A
<ul style="list-style-type: none"> <li>• at 70 Cel</li> </ul>	25 A
Type of fault current	F
I <sup>2</sup> t-value / permissible	58 000 A <sup>2</sup> ·s
Surge current resistance / rated value	3 kA

#### Product details

Product feature / silicon-free	Yes
Product extension / can be installed / supplementary devices	Yes

#### Connections

Connectable conductor cross-section / solid	
<ul style="list-style-type: none"> <li>• minimum</li> </ul>	0.75 mm <sup>2</sup>
<ul style="list-style-type: none"> <li>• maximum</li> </ul>	35 mm <sup>2</sup>
Connectable conductor cross-section / stranded	
<ul style="list-style-type: none"> <li>• minimum</li> </ul>	0.75 mm <sup>2</sup>
<ul style="list-style-type: none"> <li>• maximum</li> </ul>	35 mm <sup>2</sup>
Tightening torque / with screw-type terminals	
<ul style="list-style-type: none"> <li>• minimum</li> </ul>	2.5 N·m
<ul style="list-style-type: none"> <li>• maximum</li> </ul>	3 N·m

Position / of power supply cord	top or bottom
---------------------------------	---------------

### Mechanical Design

Height	90 mm
Width	72 mm
Depth	70 mm
Installation depth	70 mm
Number of width units	4
Mounting type	DIN rail (REG)
Mounting position	any
Net weight	350 g

### Environmental conditions

Ambient temperature	
<ul style="list-style-type: none"> <li>• minimum</li> <li>• maximum</li> </ul>	-25 °C 45 °C
Ambient temperature / during storage	
<ul style="list-style-type: none"> <li>• minimum permissible</li> <li>• maximum permissible</li> </ul>	-40 °C 75 °C

### Certificates

Reference code	
<ul style="list-style-type: none"> <li>• acc. to DIN EN 61346-2</li> <li>• acc. to DIN EN 81346-2</li> </ul>	F F

General Product Approval	Declaration of Conformity	other	Railway
--------------------------	---------------------------	-------	---------



[Miscellaneous](#)



EG-Konf.

[Miscellaneous](#)

[Vibration and Shock](#)

[Confirmation](#)

### Further information

#### Information- and Downloadcenter (Catalogs, Brochures,...)

<http://www.siemens.com/lowvoltage/catalogs>

#### Industry Mall (Online ordering system)

<https://mall.industry.siemens.com/mall/en/en/Catalog/product?mlfb=5SV3342-3>

#### Service&Support (Manuals, Certificates, Characteristics, FAQs,...)

<https://support.industry.siemens.com/cs/ww/en/ps/5SV3342-3>

#### Image database (product images, 2D dimension drawings, 3D models, device circuit diagrams, ...)

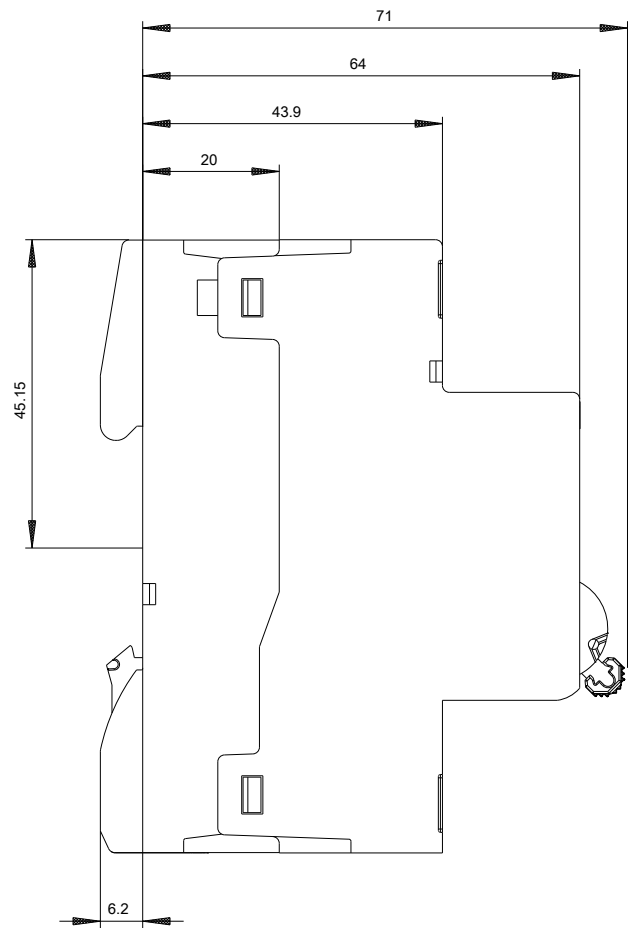
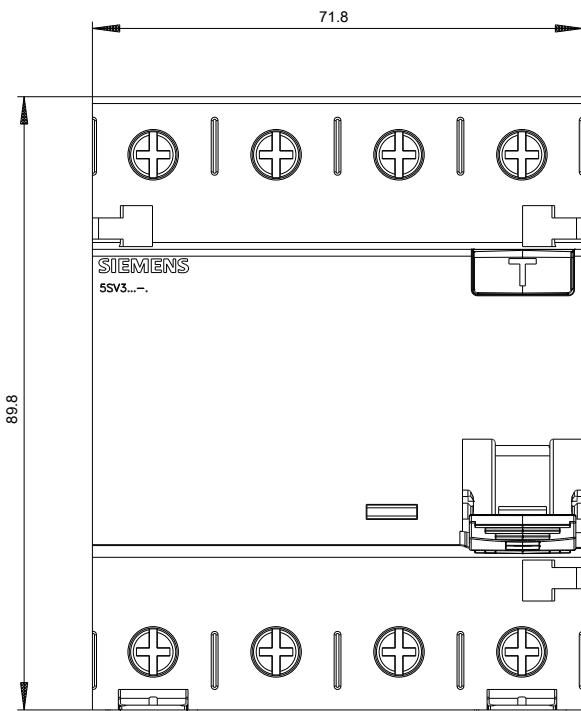
[http://www.automation.siemens.com/bilddb/cax\\_en.aspx?mlfb=5SV3342-3](http://www.automation.siemens.com/bilddb/cax_en.aspx?mlfb=5SV3342-3)

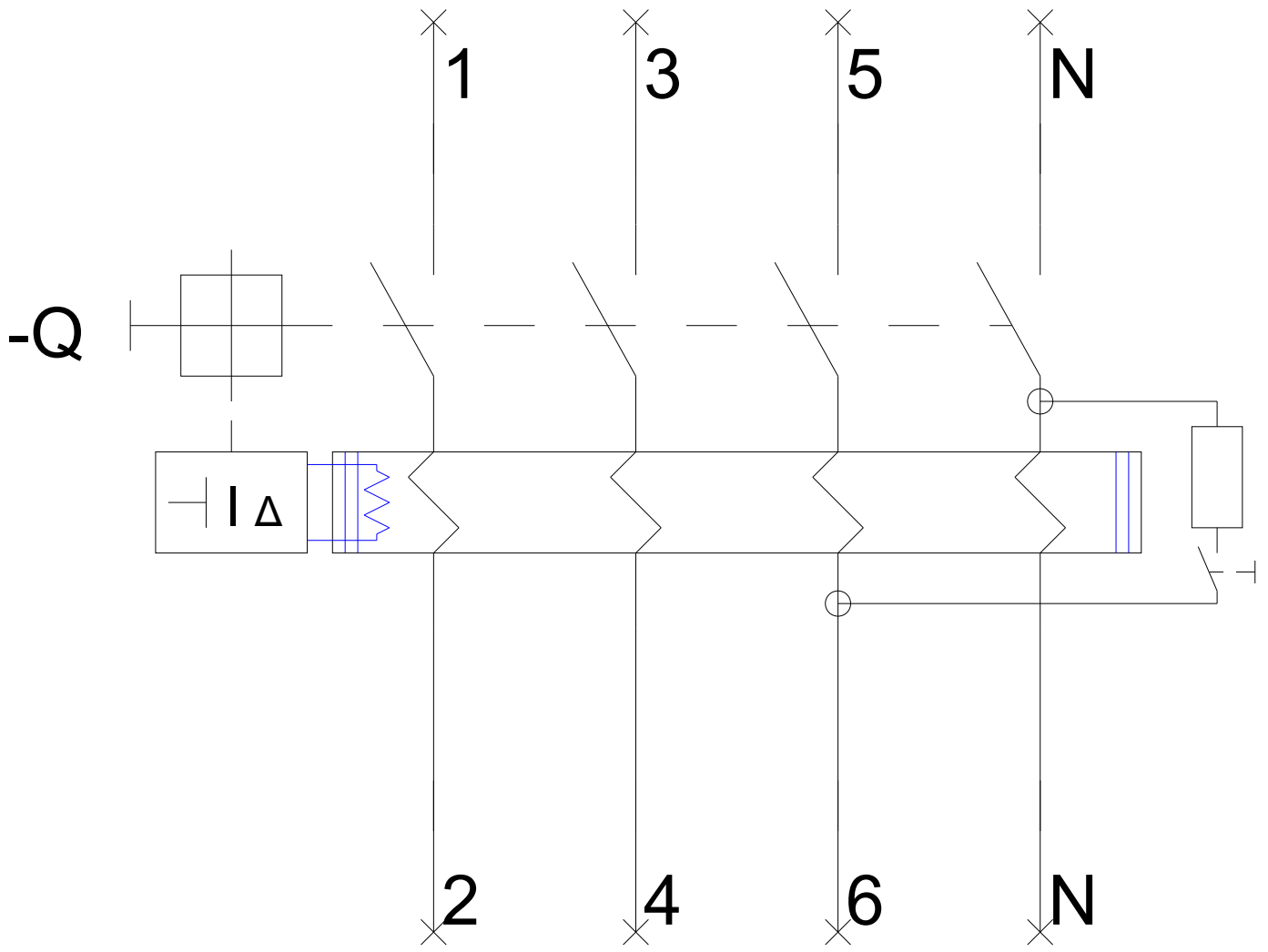
#### CAX-Online-Generator

<http://www.siemens.com/cax>

#### Tender specifications

<http://www.siemens.com/specifications>





-CB

