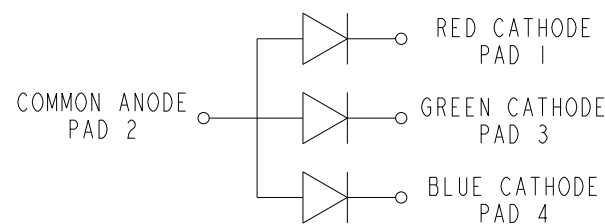


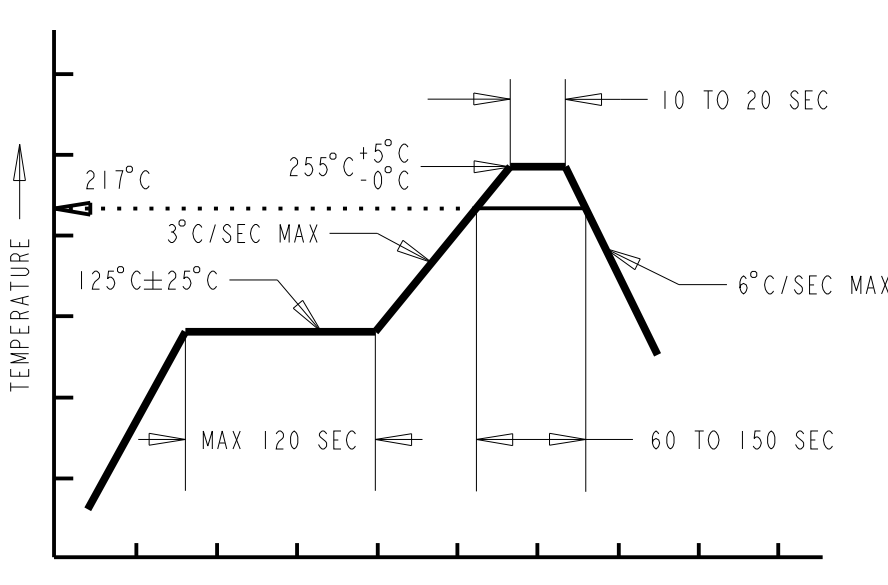
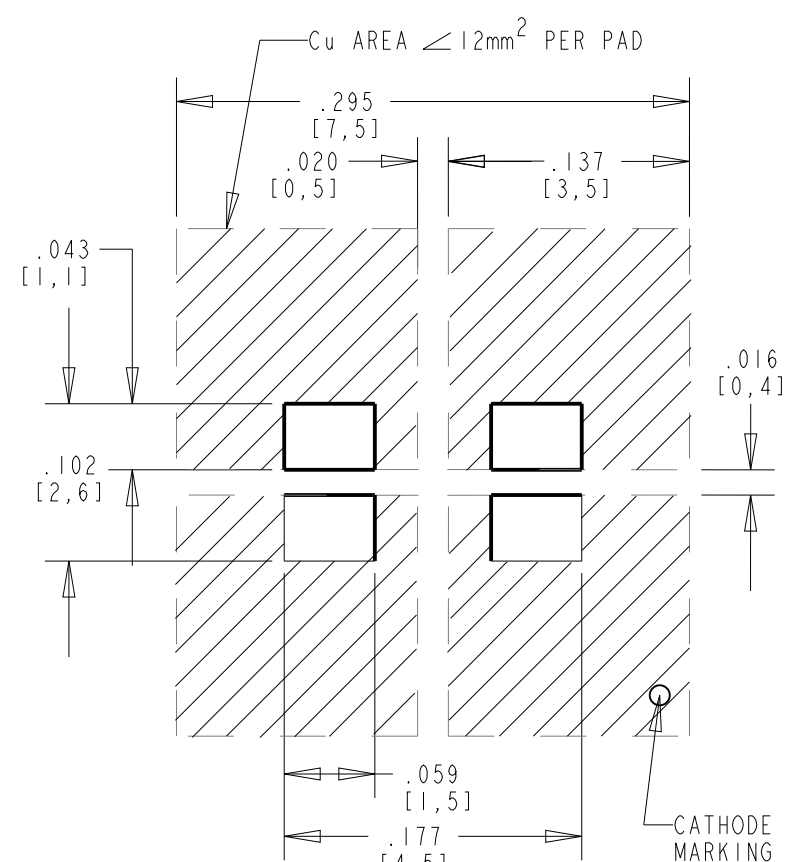
ABSOLUTE MAXIMUM RATINGS AT 25 °C AMBIENT	RED	GREEN	BLUE	UNITS
CONTINUOUS FORWARD CURRENT (ONE CHIPS ON)	30	20	20	mA
POWER DISSIPATION (TOTAL)	72	120	120	mW
OPERATING TEMPERATURE	-55 TO +100			°C
STORAGE TEMPERATURE	-55 TO +100			°C
JUNCTION TEMPERATURE	+110			°C
REVERSE VOLTAGE	5	5	5	V



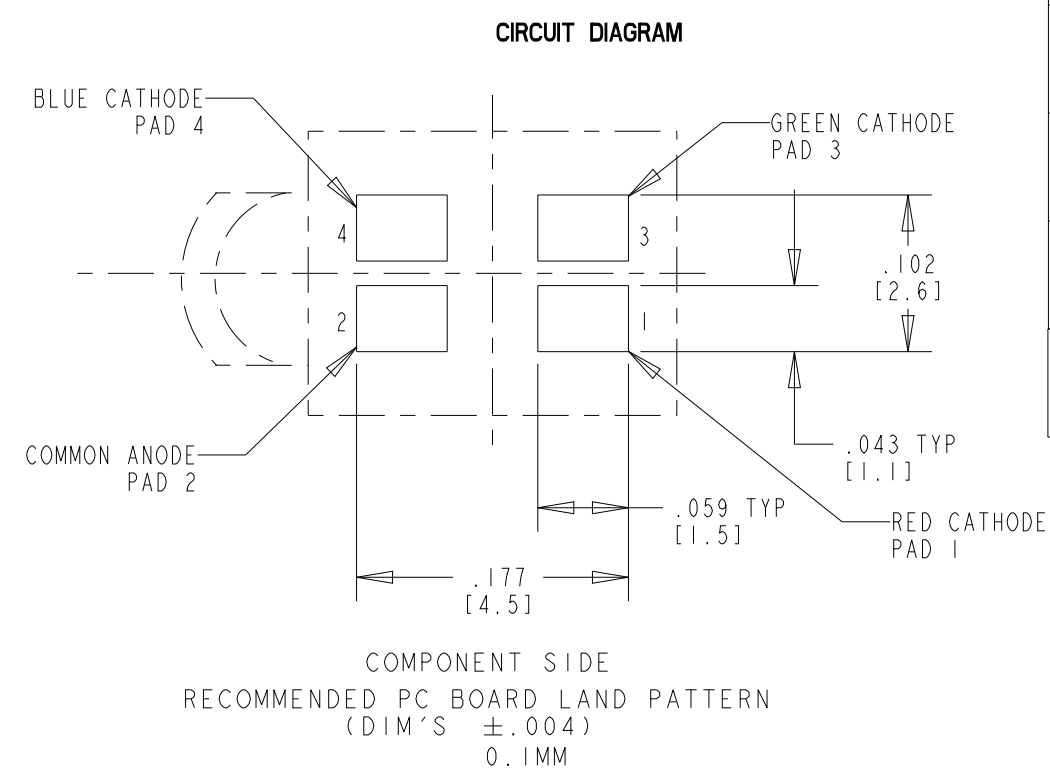
TRI-COLOR LEDS
OPERATING CHARACTERISTICS AT T_A = 25 °C

LED CHARACTERISTICS	COLOR	TYP.	MAX.	UNITS	TEST CONDITIONS
LUMINOUS INTENSITY	RED	60	-	mcd	I _f = 20 mA
	GREEN	150			
	BLUE	30			
REVERSE CURRENT	RED	100		mA	V _R = 12 V (RED) V _R = 5 V (GREEN/BLUE)
	GREEN	100			
	BLUE	100			
PEAK WAVELENGTH	RED	635		nm	I _f = 20 mA
	GREEN	523			
	BLUE	468			
DOMINANT WAVELENGTH	RED	626		nm	I _f = 20 mA
	GREEN	525			
	BLUE	470			
VIEWING ANGLE (2 θ 1/2)	RED	120		DEG.	
	GREEN	120			
	BLUE	120			
FORWARD VOLTAGE	RED	1.9	2.4	V	I = 20 mA
	GREEN	3.4	4.05		
	BLUE	3.4	4.05		

REV	ECN NO	REVISIONS	DRN	CKD	APP	DATE
A		NEW RELEASE	VP	JTD	NO	1-13-16



* THE TIME FROM 25°C TO PEAK TEMPERATURE = 6 MINUTES MAX
RECOMMENDED RoHS SOLDER PROFILE



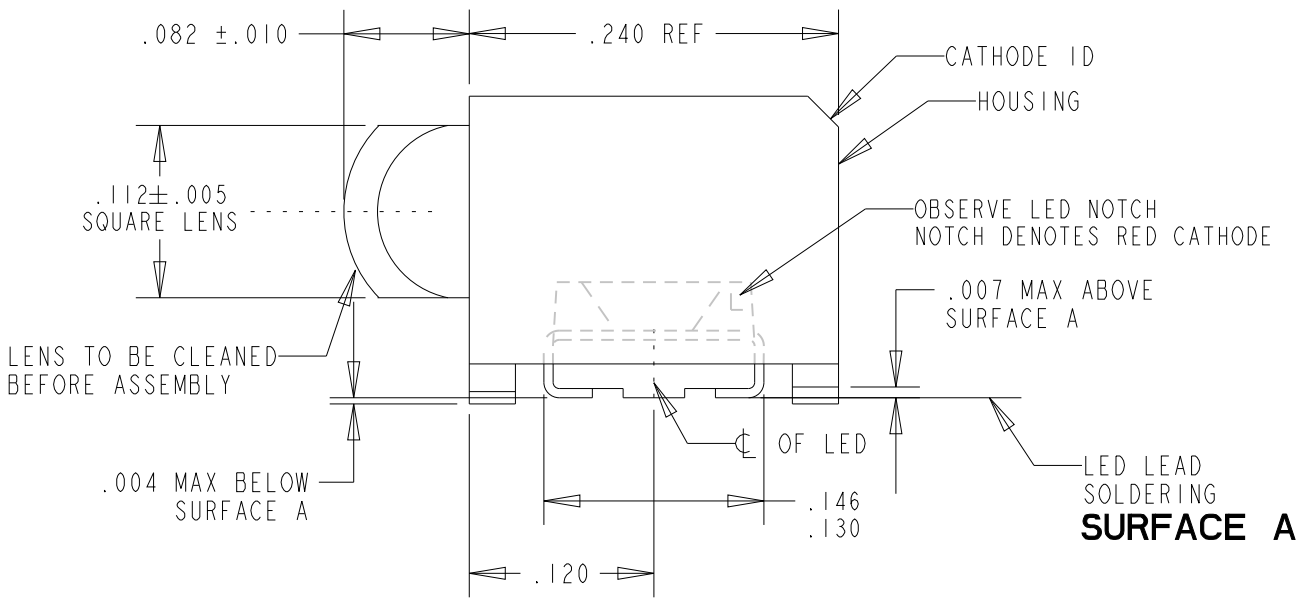
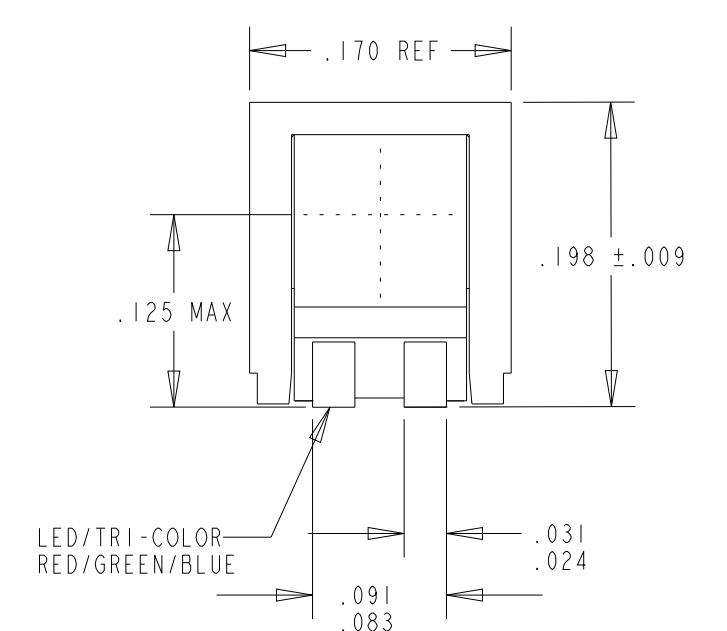
COMPONENT SIDE
RECOMMENDED PC BOARD LAND PATTERN
(DIM'S ±.004)
0.1MM

NOTES:

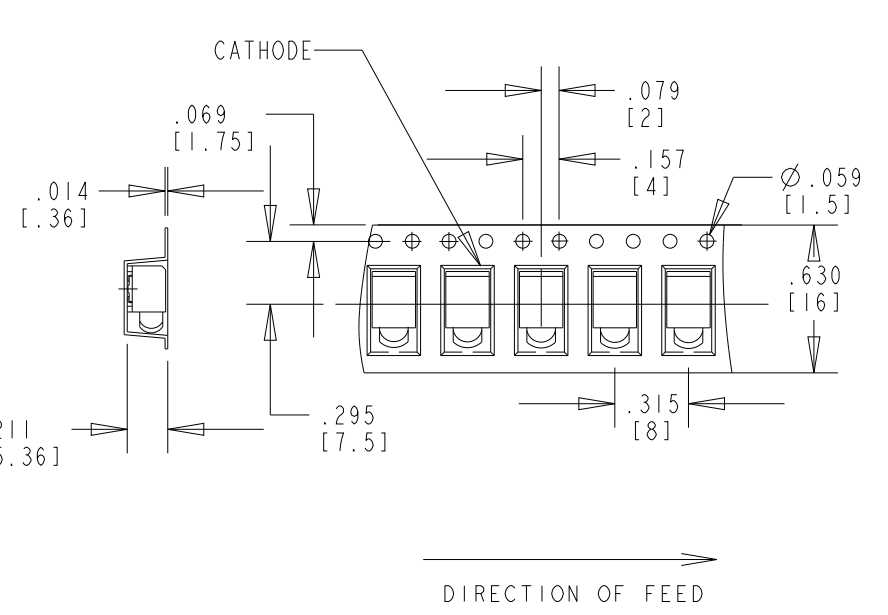
- MILLIMETER DIMENSIONS SHOWN FOR REFERENCE ONLY.
- PAD NUMBERS FOR REFERENCE ONLY, DESIGNATION NON-EXISTENT ON PART.
- STORAGE CONDITIONS FOR TAPED PRODUCT: RE-TAPING MAY BE NECESSARY FOR PRODUCT STORED MORE THAN TWELVE MONTHS.
- ORDER QUANTITY IS LED ASSEMBLIES, NOT REELS.
- 850F SUFFIX MEANS PARTS ARE PACKED ON A 20 PCS SAMPLE STRIP.
-851F SUFFIX MEANS PARTS ARE PACKED ON A 7 INCH REEL, 400 PCS/REEL.
-852F SUFFIX MEANS PARTS ARE PACKED ON A 13 INCH REEL, 1600 PCS/REEL.
- LENS MOVEMENT IN RELATIONSHIP TO THE HOUSING IS:
.009" T.I.R. VERTICALLY.
.007" T.I.R. HORIZONTALLY.
- FRONT AND REAR TERMINALS OF ASSEMBLY TO BE WITHIN .005 COPLANARITY.
- DEVICE HAS A MOISTURE SENSITIVITY LEVEL "2a" CAUTION LABEL APPLIED AS PER JEDEC STD. 033
- THIS PRODUCT IS Pb FREE. IT IS IN COMPLIANCE WITH THE DIRECTIVE 2002/95/EC (RoHS) AND DOES NOT CONTAIN ANY OF THE BANNED SUBSTANCES Pb, Cd, MERCURY, HEXAVALENT CHROMIUM OR FLAME RETARDANTS (PBB, PBDE)
- REFER TO DIALIGHT P/N 591-3501-850F, 591-3501-851F & 591-3501-852F.
- THIS ASSEMBLY CONTAINS ELECTROSTATIC DISCHARGE SENSITIVE DEVICES (ESDS). MAINTAIN ALL PRECAUTIONARY MEASURES DURING ASSEMBLY, HANDLING AND STORAGE IN ACCORDANCE WITH IPC-A-610.



IR REFLOW SOLDERING PAD

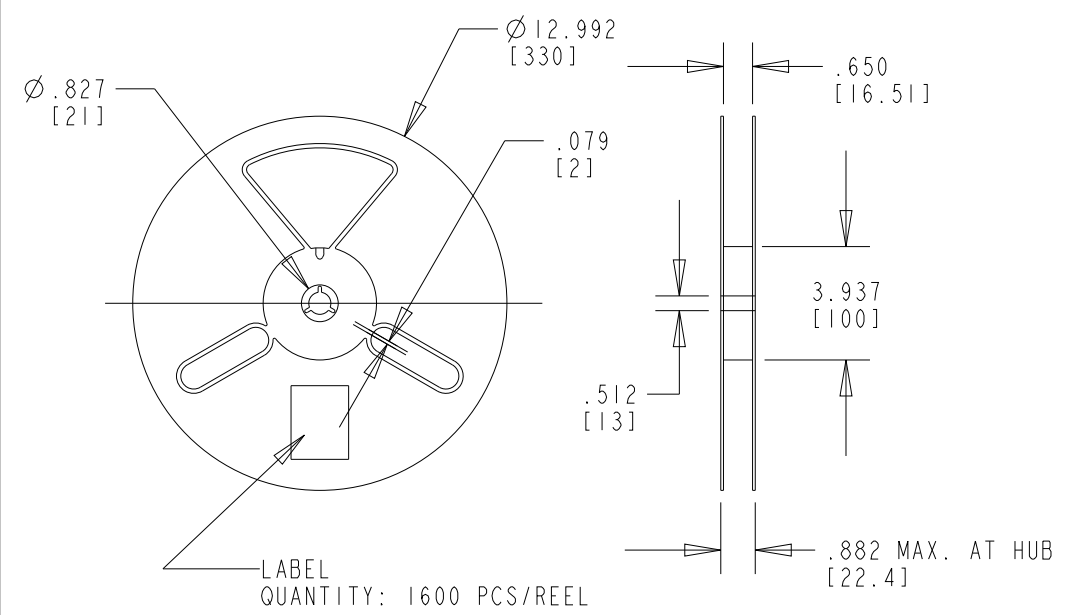


TAPING SPECIFICATION

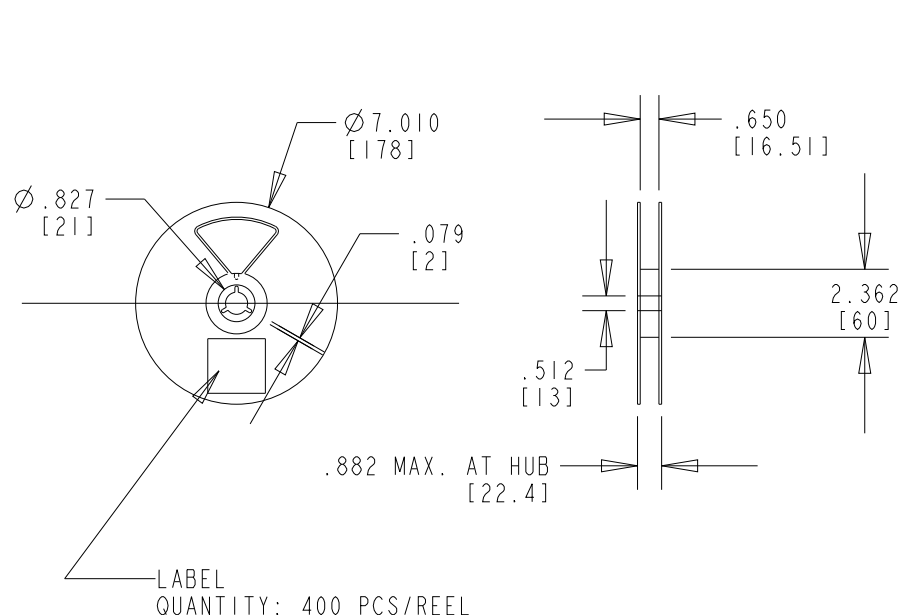


TOLERANCE: .004 UNLESS OTHERWISE SPECIFIED.
MILLIMETER DIMENSIONS SHOWN FOR REFERENCE ONLY.

REEL SPECIFICATION



13 INCH DIA. REEL SPECIFICATIONS



7 INCH DIA. REEL SPECIFICATIONS



ATTENTION:
OBSERVE PRECAUTIONS FOR
HANDLING ELECTROSTATIC
SENSITIVE DEVICES

RoHS Compliant 591-3501-85XF

Part Numbers with the "F" suffix ending are RoHS Compliant.
For example: 591-3501-851F
Reel and bag packaging are marked with "RoHS Compliant"
label or equivalent markings. These parts can be used with
RoHS reflow profile. Parts can be wave soldered, dip soldered
or hand soldered using typical lead-free soldering process
with max 260°C temp. for 5 sec.

THIS DRAWING AND THE CONTENTS HEREIN ARE CONFIDENTIAL AND THE SOLE PROPERTY OF DIALIGHT. REPRODUCTION OF THIS DRAWING OR CONSTRUCTION OF ANY PARTS WITHIN THIS DRAWING ARE FORBIDDEN WITHOUT THE WRITTEN CONSENT OF DIALIGHT.		
SCALE: DRAWING SCALE	DRAWING NUMBER	REV
ALL DIM'S IN: INCHES (MM)	C-18235	A
TOLERANCES: UNLESS OTHERWISE SPECIFIED	TITLE SURFACE MOUNT CBI-SQUARE LENS	
FRACTIONS: ±1/64	RoHS COMPLIANT	
DECIMALS (.XX): ±.01	MATERIAL	
DECIMALS (.XXX): ±.005	FINISH:	
DECIMALS (.XXXX): ±.0005	FSCM 83330	
ANGLES: ±1°	SHEET 1 OF 1 FAMILY TABLE:	
	Dialight 1501 ROUTE 34 SOUTH FARMINGDALE, NJ 07727	