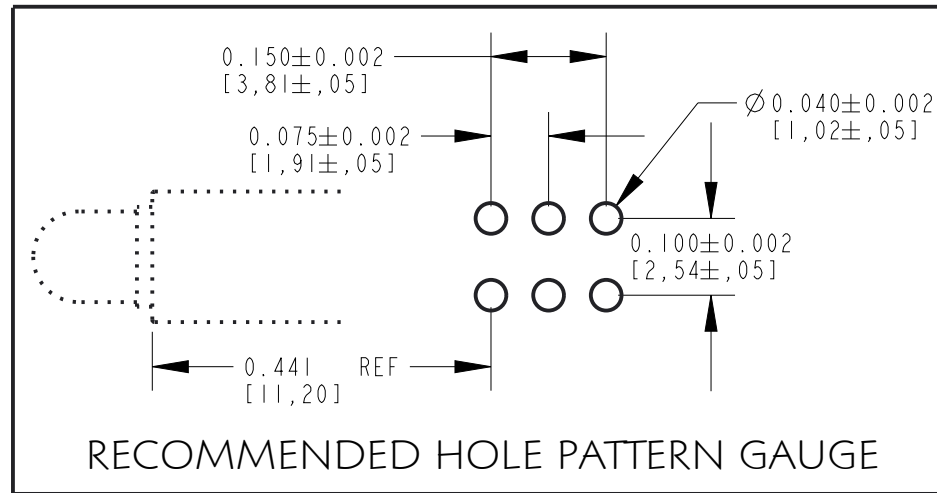


# RoHS COMPLIANT 568-0202-810F

Part Numbers with the "F" suffix ending are RoHS Compliant. Packaging is marked with "RoHS Compliant" label or equivalent markings. Parts can be wave soldered, dip soldered or hand soldered using typical lead-free soldering process with max 260°C temp. for 5 sec.

REV	ECN NO	REVISIONS	DRN	CKD	APP	DATE
A		NEW RELEASE	LD		NO	7-1-21

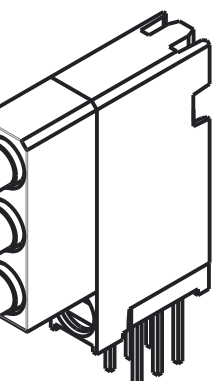


**NOTES:**

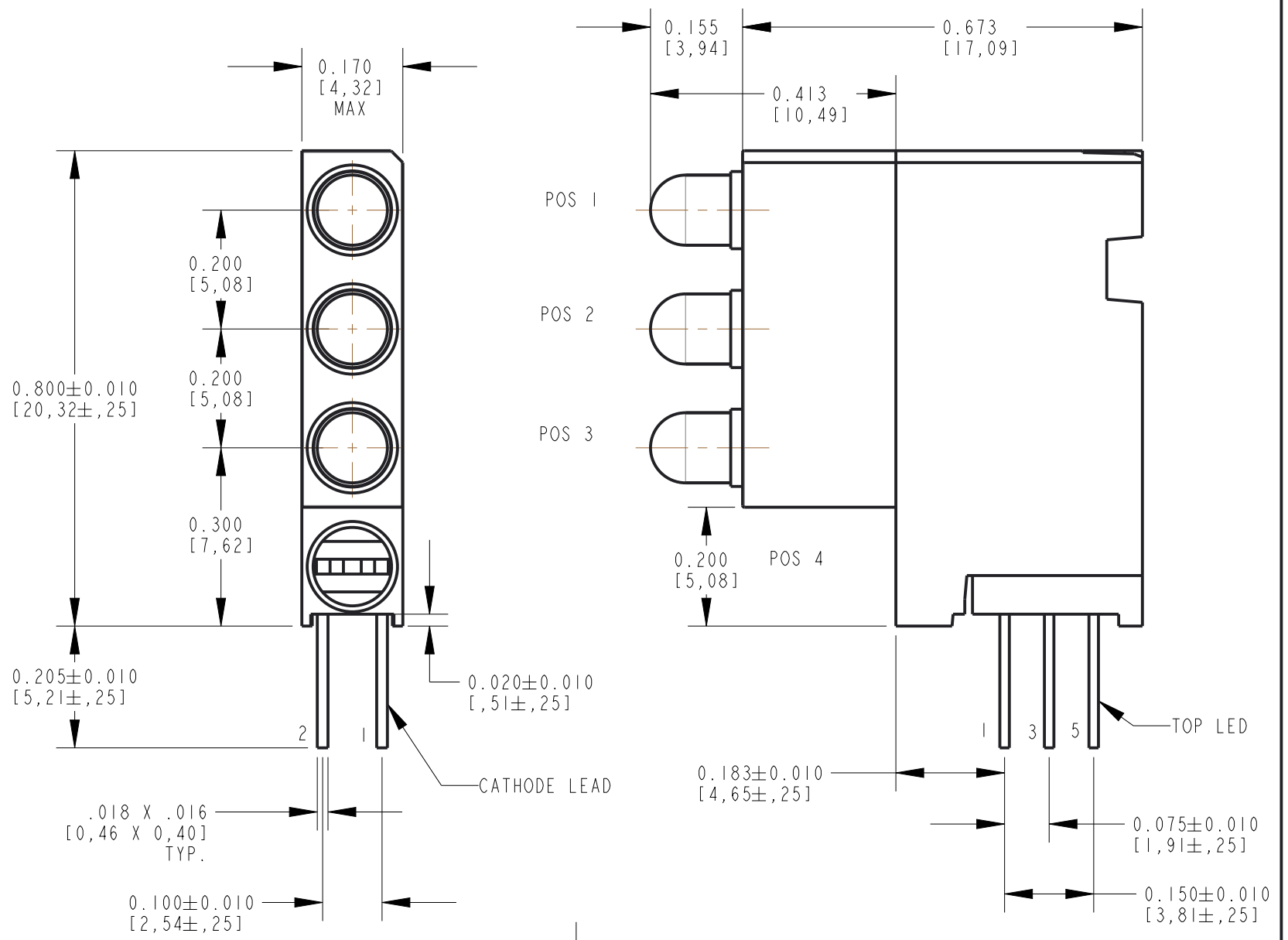
- LED LEAD DIMENSIONS SHOWN ARE MEASURED AT HOUSING EXIT.
- LEADS TO FIT INTO HOLES SPACED AS PER PATTERN.
- PIN NUMBERS FOR REFERENCE ONLY, DESIGNATION NON-EXISTENT ON PART.
- DIALIGHT PART NUMBER: 568-0202-810F.
- THIS ASSEMBLY CONTAINS ELECTROSTATIC DISCHARGE SENSITIVE DEVICES (ESDS). MAINTAIN ALL PRECAUTIONARY MEASURES DURING ASSEMBLY, HANDLING, AND STORAGE IN ACCORDANCE WITH IPC-A-610.

OPERATING CHARACTERISTICS AT 25°C AMBIENT						
LED CHARACTERISTICS	COLOR	MIN.	TYP.	MAX.	UNITS	TEST CONDITIONS
LUMINOUS INTENSITY	GREEN	1.0	1.6		mcd	I <sub>F</sub> = 2 mA
	YELLOW	1.0	1.6			
	RED	1.0	1.6			
PEAK WAVELENGTH	GREEN		565		nm	
	YELLOW		585			
	RED		635			
FORWARD VOLTAGE	GREEN		2.1	2.8	V	I <sub>F</sub> = 2 mA
	YELLOW		1.8	2.7		
	RED		1.7	2.2		
REVERSE CURRENT	GREEN			10	µA	V <sub>r</sub> = 5 V
	YELLOW			10		
	RED			10		
VIEWING ANGLE	GREEN		60		DEGREES	
	YELLOW		60			
	RED		60			

ABSOLUTE MAXIMUM RATINGS AT 25°C AMBIENT	COLOR			UNITS
	GREEN	YELLOW	RED	
POWER DISSIPATION	20	20	20	mW
CONTINUOUS FORWARD CURRENT	7	7	7	mA
PEAK FORWARD CURRENT (1/10 DUTY CYCLE, 0.1ms PULSE WIDTH)	500	500	500	mA
REVERSE VOLTAGE		5		V
SOLDERING TEMPERATURE FOR 5 SEC. (.063" [1,60mm] FROM BODY)		260		°C
OPERATING TEMPERATURE		-55 TO +100		°C
STORAGE TEMPERATURE		-55 TO +100		°C



**ATTENTION:**  
OBSERVE PRECAUTIONS FOR  
HANDLING ELECTROSTATIC  
SENSITIVE DEVICES



LED POSITION	COLOR	PIN OUTS
1	GREEN DIFFUSED	5 CATHODE, 6 ANODE
2	YELLOW DIFFUSED	3 CATHODE, 4 ANODE
3	RED DIFFUSED	1 CATHODE, 2 ANODE
4	BLANK	BLANK

THIS DRAWING AND THE CONTENTS HEREIN ARE CONFIDENTIAL AND THE SOLE PROPERTY OF DIALIGHT CORP. REPRODUCTION OF THIS DRAWING OR CONSTRUCTION OF ANY PARTS WITHIN THIS DRAWING ARE FORBIDDEN WITHOUT THE WRITTEN CONSENT OF DIALIGHT CORP.

SCALE: 4.000	DRAWING NUMBER	REV
ALL DIM'S: INCH (mm)	C-18522	A
TOLERANCES: UNLESS OTHERWISE SPECIFIED	TITLE	
FRACTIONS: ±1/64	Ø3mm QUAD LEVEL CBI W/ 10.5mm PROTRUSION	
DECIMALS (.XX): ±.02	LOW CURRENT LEDS & .205 [5.21mm] LL	
DECIMALS (.XXX): ±.015	MATERIAL	
ANGLES: ±3°		
FINISH		
FSCM 83330	<b>Dialight</b>	1501 ROUTE 34 SOUTH FARMINGDALE, NJ 07727 (732) 919-3119 www.dialight.com
	SHEET 1 OF 1	FAMILY TABLE: