

5645518-1 ✓ ACTIVE



TE Internal #: 5645518-1

Pin Sockets, Socket Length 5.23 mm [.206 in], PCB Hole Diameter .

075 in [1.91 mm], Closed Bottom, .653 – .823 mm² Wire Size, 19 – 18

AWG Wire Size

[View on TE.com >](#)

Connectors > Socket Connectors > Pin Sockets > Miniature Spring Sockets: Closed Bottom, Beryllium Copper, 6.5A



Socket Length: 5.23 mm [.206 in]

PCB Hole Diameter: 1.91 mm [.075 in]

Socket Sleeve Style: **Closed Bottom**

Wire Size: .653 – .823 mm²

[All Miniature Spring Sockets: Closed Bottom, Beryllium Copper, 6.5A \(10\)](#)

Features

Product Type Features

Socket Sleeve Style	Closed Bottom
Connector System	Cable-to-Board
Sealable	No
Connector & Contact Terminates To	Printed Circuit Board

Configuration Features

Compatible With Wire & Cable Type	Discrete Wire
-----------------------------------	---------------

Body Features

Sleeve Material	Copper
Sleeve Plating Material	Tin

Contact Features

Contact Spring Plating Material	30 μin
Contact Spring Plating Material	Gold
Contact Mating Area Plating Material Thickness	30 μm[30 μin]
Contact Base Material	Beryllium Copper



Contact Current Rating (Max)	6.5 A
------------------------------	-------

Termination Features

Insertion Method	Hand/Semi-Automatic/Automatic
------------------	-------------------------------

Termination Method to Printed Circuit Board	Through Hole - Press-Fit
---	--------------------------

Termination Method to Wire & Cable	Solder
------------------------------------	--------

Dimensions

PCB Thickness (Recommended)	.79 – 3.18 mm [.031 – .125 in]
-----------------------------	--------------------------------

Socket Length	5.23 mm [.206 in]
---------------	-------------------

PCB Hole Diameter	1.91 mm [.075 in]
-------------------	-------------------

Wire Size	.653 – .823 mm ²
-----------	-----------------------------

Mating Pin Diameter Range	.96 – 1.07 mm [.038 – .042 in]
---------------------------	--------------------------------

Usage Conditions

Operating Temperature Range	-65 – 125 °C [-85 – 257 °F]
-----------------------------	-----------------------------

Operation/Application

Solder Process Feature	None
------------------------	------

Circuit Application	Power & Signal
---------------------	----------------

Packaging Features

Packaging Quantity	50000
--------------------	-------

Packaging Method	Reel
------------------	------

Other

Spring Material	Beryllium Copper
-----------------	------------------

Product Compliance

[For compliance documentation, visit the product page on TE.com>](#)

EU RoHS Directive 2011/65/EU	Compliant
------------------------------	-----------

EU ELV Directive 2000/53/EC	Compliant
-----------------------------	-----------

China RoHS 2 Directive MIIT Order No 32, 2016	No Restricted Materials Above Threshold
---	---

EU REACH Regulation (EC) No. 1907/2006	Current ECHA Candidate List: JUNE 2022 (224) Candidate List Declared Against: JUNE 2022 (224) Does not contain REACH SVHC
--	---

Halogen Content	Low Halogen - Br, Cl, F, I < 900 ppm per homogenous material. Also BFR/CFR/PVC
-----------------	--

Free

Solder Process Capability

Pin-in-Paste capable to 260°C

Product Compliance Disclaimer

This information is provided based on reasonable inquiry of our suppliers and represents our current actual knowledge based on the information they provided. This information is subject to change. The part numbers that TE has identified as EU RoHS compliant have a maximum concentration of 0.1% by weight in homogenous materials for lead, hexavalent chromium, mercury, PBB, PBDE, DBP, BBP, DEHP, DIBP, and 0.01% for cadmium, or qualify for an exemption to these limits as defined in the Annexes of Directive 2011/65/EU (RoHS2). Finished electrical and electronic equipment products will be CE marked as required by Directive 2011/65/EU. Components may not be CE marked. Additionally, the part numbers that TE has identified as EU ELV compliant have a maximum concentration of 0.1% by weight in homogenous materials for lead, hexavalent chromium, and mercury, and 0.01% for cadmium, or qualify for an exemption to these limits as defined in the Annexes of Directive 2000/53/EC (ELV). Regarding the REACH Regulation, the information TE provides on SVHC in articles for this part number is based on the latest European Chemicals Agency (ECHA) 'Guidance on requirements for substances in articles' posted at this URL: <https://echa.europa.eu/guidance-documents/guidance-on-reach>

Customers Also Bought



TE Part #1-1734592-8
FPC CONN. 0.5MM PITCH B/C, 18P



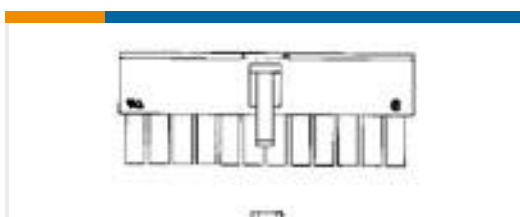
TE Part #2176057-8
RLP73V 3A R020 1% 1K RL



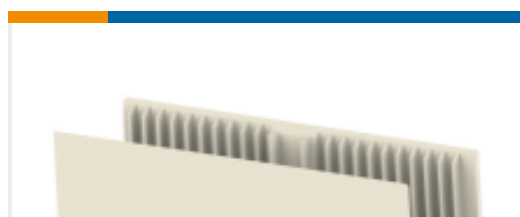
TE Part #1586862-4
4P FH PLUG VAL-U-LOK FH GW



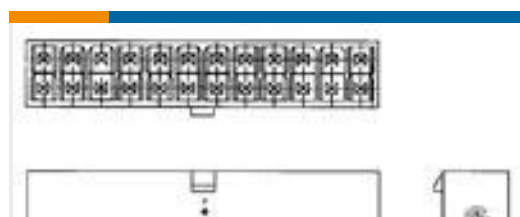
TE Part #5569381-1
STK MJ ASSY,8POS,2X1,SHLD,CAT5



TE Part #1-794954-4
14P RCPT VAL-U-LOK V2



TE Part #100745-3
Z-PACK/L M-HSG 06P



TE Part #1-1586768-0
10P VERT HDR VAL-U-LOK GW



TE Part #2-1474612-4
FSP-11.25A-6

Documents

Product Drawings

MSS SER 4 SPL ON STRIP

English

CAD Files

Customer View Model

ENG_CVM_5645518-1_O1.3d_igs.zip

English

Customer View Model

ENG_CVM_5645518-1_O1.3d_stp.zip

English



Customer View Model

[ENG_CVM_5645518-1_O1.2d_dxf.zip](#)

English

[3D PDF](#)

English

By downloading the CAD file I accept and agree to the [Terms and Conditions](#) of use.

Product Specifications

[Product Specification](#)

English

Product Environmental Compliance

[TE Material Declaration](#)

English