

Technical Product Information

1. General

Battery Pack including safety circuit & wires with connector
 Cell: LPP 503562 DL
 PCM: Yes
 NTC: 10 kΩ ± 3%; B-Value 3435 ± 3%
 ID: None
 Configuration: 2P stack up
 Weight: appr. 43g

2. Electrical Specification

Rated Capacity: 2500mAh min., 2600mAh typical
 Nominal Voltage: 3.7V
 Watt-Hour Rating: 9.7Wh
 Charging Method: Constant Current + Constant Voltage
 Max. Charge Voltage [V]: 4.2(±50mV)
 Max. Continuous Charge Current: 1250mA
 Rec. Charge Cut Off: by current 50mA or timer 5h
 Max. Continuous Discharge Current: 2000mA (limited by PCM)
 Rec. Discharge Cut Off: 3V
 Internal Impedance: approx. 110mΩ
 Exp. Cycle Life: 300 cycles >80% of initial cap. (0.5C/0.5C)
 500 cycles > 70% of initial cap. (0.5C/0.5C)

Cell Protection

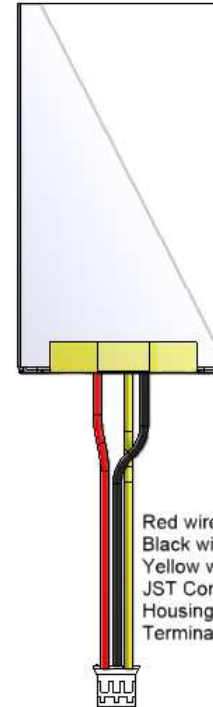
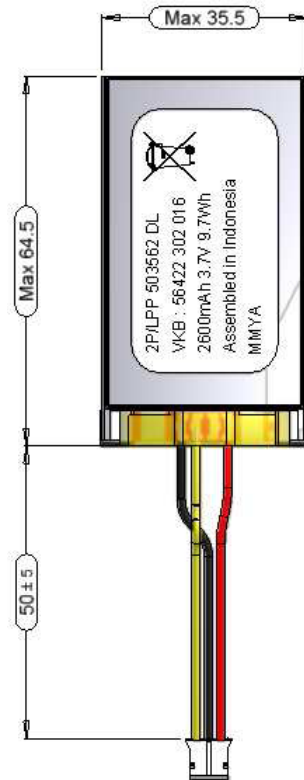
Overcharge Detection: 4.3V ± 20mV
 (0.8 to 1.2sec. delay, resume 4.1V ± 30mV)
 Overdischarge Detection: 2.4V ± 35mV
 (78.8 to 115.2msec. delay @ remove loader & charging current)
 Overcurrent Detection: 3.2A to 5.2A (9.6 to 14.4 msec. delay)

3. Ambient Conditions

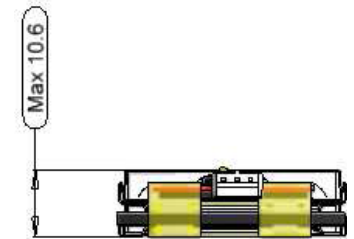
Temperature Range
 • Charge: 0 to +45°C
 • Discharge: -20 to +60°C
 • Storage Temperature: 1 year at -20 to +35°C
 3 months at -20 to +45°C
 1 month at -20 to +60°C
 • Humidity: 65 ± 20%RH

4. Environmental and Safety

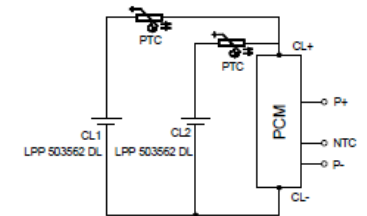
Please follow VARTA Handling and Safety Precautions for Lilon & LiPolymer.
 The cell is approved according UL 1642.
 This battery meets the requirements of Battery Directives and the battery parts are RoHS-Compliant.



Red wire (AWG 24 UL 1007) Pin 1
 Black wire (AWG 24 UL 1007) Pin 2
 Yellow wire (AWG 24 UL 1007) NTC Pin 3
 JST Connector :
 Housing PHR-03
 Terminal SPH-002T-P0.5S



Protection Circuit Module



2P/LPP 503562 DL
 VKB: 56422 302 016
 2600mAh 3.7V 9.7Wh
 Assembled in Indonesia
 MMYA

MM - Month two digits
 Y - Year one digit
 A - Week one digit

Minimum Packaging Unit: 60 pcs
 Product for OEM customers only!

2P/LPP 503562 DL PCM WC
 VKB 56422 302 016

Product Information

