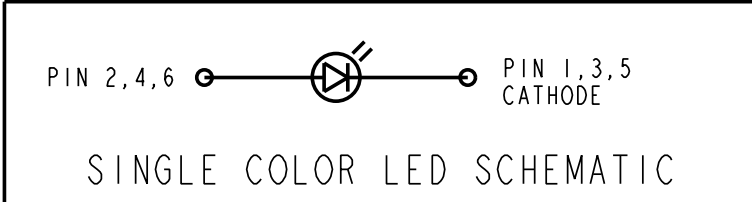
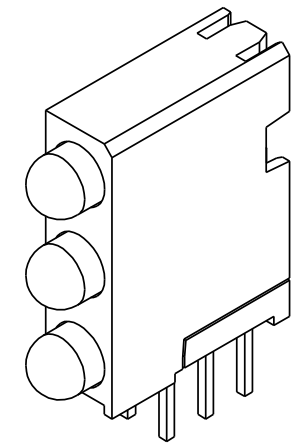
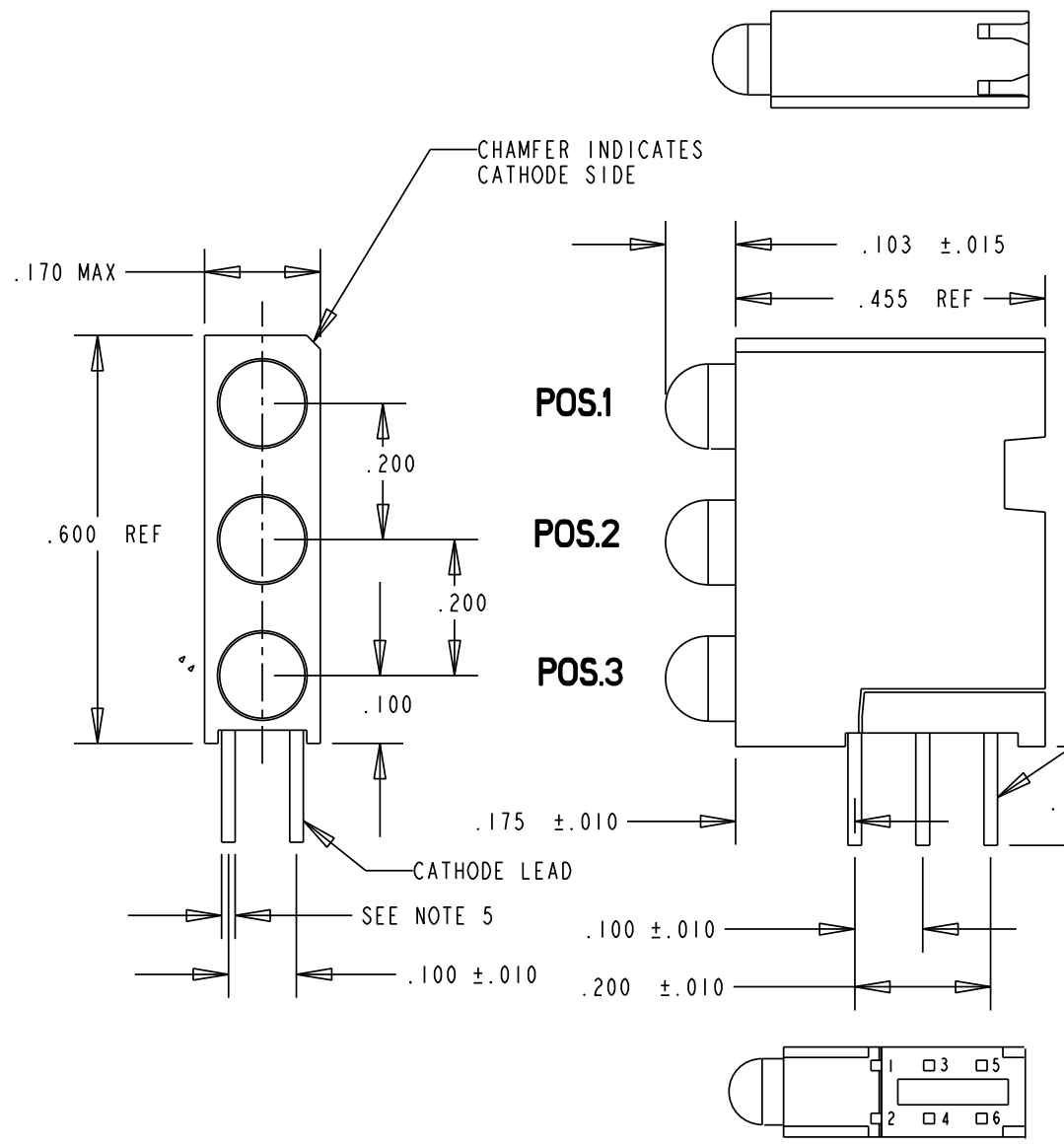


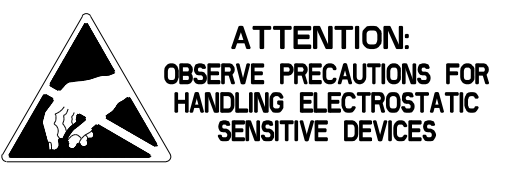
PART NUMBER and LEGEND	LED COLOR		
	POSITION 1	POSITION 2	POSITION 3
564-0100-824F	BLUE DIFFUSED	YELLOW DIFFUSED	GREEN WATER CLEAR

REV	ECN NO	REVISIONS	DRN	CKD	APP	DATE
01		NEW RELEASE	SM			

OPERATING CHARACTERISTICS AT 25°C AMBIENT						
CHARACTERISTICS	LED COLOR	MIN	TYP	MAX	UNITS	TEST CONDITIONS
LUMINOUS INTENSITY	YELLOW	74	100			
	GREEN	280	1120			
	BLUE	6.3		20		
FORWARD VOLTAGE	YELLOW		2.1	2.8		
	GREEN		2.9	3.3	3.9	
	BLUE		3.5	4.2		
REVERSE CURRENT	YELLOW			100	μA	V _R = 5 V
	GREEN			.01	10	
	BLUE			10		
PEAK WAVELENGTH	YELLOW		585			
	GREEN		523			
	BLUE		428			
VIEWING ANGLE	YELLOW		60		Degree	
	GREEN		30			
	BLUE		70			



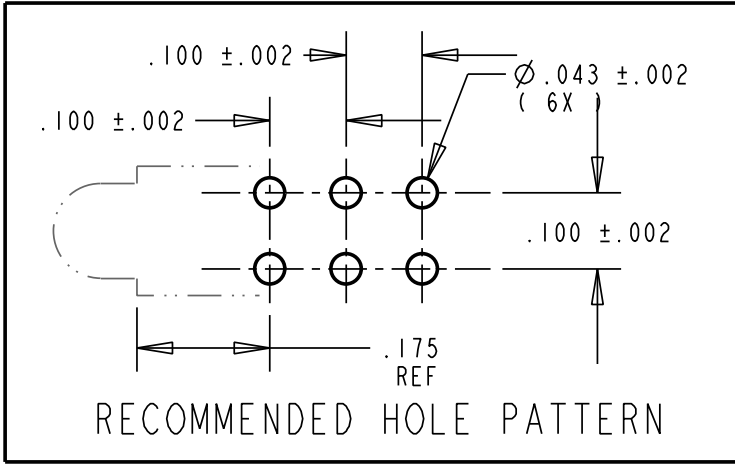
- NOTES:
- LEADS TO FIT INTO HOLES SPACED AS PER HOLE PATTERN
 - WHEN A ZERO APPEARS IN THE LAST 3 DIGITS OF THE PART NUMBER THIS MEANS NO LAMP REQUIRED IN THAT POSITION
 - LED LEAD DIMENSIONS SHOWN ARE MEASURED AT HOUSING EXIT. NON-EXISTENT ON PARTS.
 - PIN NUMBERS FOR REFERENCE ONLY, DESIGNATION NON-EXISTENT ON PARTS.
 - BLUE, GREEN .020 SQ; YELLOW .018 X .016
 - DIALIGHT PART NO. 564-0100-824F



* ATTENTION: OBSERVE PRECAUTIONS FOR HANDLING ELECTROSTATIC SENSITIVE DEVICES.

RoHS Compliant 564-0100-824F Thru hole Tri-level CBI

Part Numbers with the "F" suffix ending are RoHS Compliant. The bag packaging is marked with "RoHS Compliant" label or equivalent markings. Parts can be wave soldered, dip soldered or hand soldered using typical lead-free soldering process with max 260°C temp. for 5 sec.



ABSOLUTE MAXIMUM RATING AT 25°C AMBIENT		UNITS	YELLOW	GREEN	BLUE
POWER DISSIPATION		mW	60	80	100
CONTINUOUS FORWARD CURRENT		mA	20	20	20
DERATING LINEAR FROM 50° C		mA/°C	.25	—	.44
PEAK FORWARD CURRENT (1/10 DUTY CYCLE, 0.1 ms PULSE WIDTH)		mA	80	—	128
LEAD SOLDERING TEMPERATURE, 5 SEC., 1/16" FROM BODY		°C	260	260	260
OPERATING TEMPERATURE		°C	-55 TO 100	-55 TO 100	-40 TO 100
STORAGE TEMPERATURE		°C	-55 TO 100	-55 TO 100	-40 TO 100

THIS DRAWING AND THE CONTENTS HEREIN ARE CONFIDENTIAL AND THE SOLE PROPERTY OF DIALIGHT. REPRODUCTION OF THIS DRAWING OR CONSTRUCTION OF ANY PARTS WITHIN THIS DRAWING ARE FORBIDDEN WITHOUT THE WRITTEN CONSENT OF DIALIGHT.

SCALE: DRAWING SCALE	DRAWING NUMBER	REV
ALL DIM'S IN: INCHES (MM)	C-17450	01
TOLERANCES: UNLESS OTHERWISE SPECIFIED	TITLE 3 X 1 CBI BLOCK B, Y, G RoHS COMPLIANT	
FRACTIONS: ±1/64	MATERIAL	
DECIMALS (.XX): ±.01		
DECIMALS (.XXX): ±.005		
DECIMALS (.XXXX): ±.0005		
ANGLES: ±1°	FINISH:	
FSCM 83330	SHEET 1 OF 1 FAMILY TABLE:	

1501 ROUTE 34 SOUTH
FARMINGDALE, NJ 07727