

PRODUCT NUMBER
 5 4 2 0 2 - X X X X X - X X X LF

PLATING

S=15μ" [0.38μm] GOLD
 ON CONTACT AREA
 100μ" [2.5μm] TIN
 ON TAIL

G=30μ" [0.76μm] GOLD
 ON CONTACT AREA
 100μ" [2.5μm] TIN
 ON TAIL

T=100μ" [2.5μm] TIN
 ON CONTACT AREA
 AND ON TAIL (SEE NOTE 11, 15)

F=2μ" [0.05μm] GOLD
 ON CONTACT AREA
 AND ON TAIL

LEAD FREE OPTION NOTE 9 & 10

POLARIZATION
 NOTE 6

PACKAGING TYPE, NOTE 5

POSITIONS PER ROW
 02 TO 20

LEAD STYLE	POST
08	0.230/5.84
30	0.318/8.08

NOTES:

- ① HOUSING MAT'L: HIGH TEMPERATURE THERMOPLASTIC.
 FLAME RETARDANT PER UL 94V-0
 COLOR: BLACK
 OR
 MINERAL FILLED LCP FLAME RETARDENT
 PER UL-94V-0. COLOR: BLACK.
- THESE PART NUMBERS WILL WITHSTAND EXPOSURE
 TO 260 C PEAK TEMPERATURE FOR 20 SECONDS IN
 WAVE SOLDER, INFRA-RED OR VAPOR PHASE SOLDER PROCESS.

- ② PIN MATERIAL: PHOSPHOR-BRONZE
- ③ TO DETERMINE DIMENSIONS:
 N = NUMBER OF POSITIONS ROW.
 EXAMPLE: 10 POS., N x .100/2.54=1.00/25.4
- ④ 2LBS/0.9KG MIN. PIN RETENTION IN EITHER DIRECTION.
- ⑤ PACKAGING: _ =POLY BAGS WITHOUT PICKUP CAP.
 T =TUBES (OMIT DASH IF NOT POLARIZED).
 P =TUBES WITH PICKUP CAPS.
 A =TAPE AND REEL WITH PICKUP CAPS.
 C =CUSTOMIZED TAPE AND REEL WITH PICKUP CAPS.

- ⑥ FOR POLARIZATION, SPECIFY POSITION NUMBER
 (i.e. A03=ROW A POS. 3) TO OMIT PIN.
 OMIT FROM PRODUCT NUMBER IF THIS FEATURE IS NOT APPLICABLE.
 PRODUCT MANAGEMENT APPROVAL REQUIRED PRIOR TO RELEASE
 OR SALE OF POLARIZED PRODUCTS.

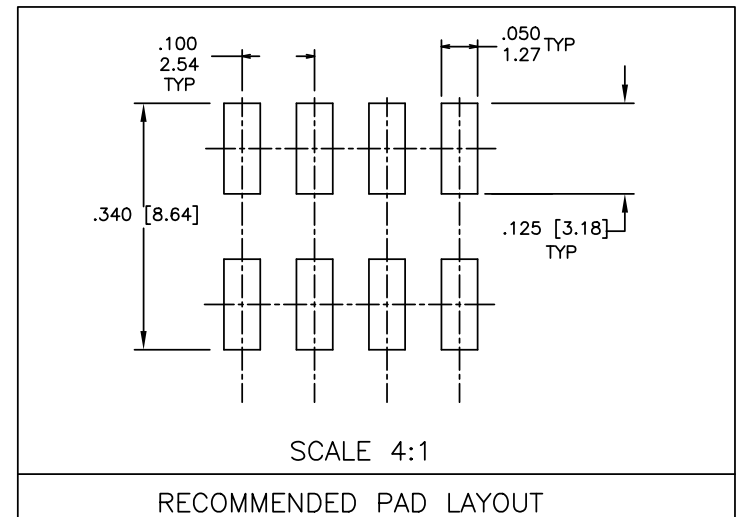
7. UNDERPLATING: 50μ"/1.2μm Ni.
8. PIN TIPS ON Sn PLATED PRODUCT MAY HAVE BARE METAL ON TWO SIDES,
 BOTH ENDS.

- ⑨ PART NUMBERS WITH "LF" SUFFIX AT THE END ARE LEAD FREE.

- ⑩ THESE PRODUCTS MEETS EUROPEAN UNION DIRECTIVES AND OTHER
 COUNTRY REGULATION AS DESCRIBED IN GS-22-008.

- ⑪ "THIS PRODUCT HAS 100% PURE TIN PLATING IN THE INTERFACE AND
 HAS NOT BEEN TESTED FOR WHISKER GROWTH IN ALL INTERCONNECT
 ENVIRONMENTS."

12. THE HOUSING WILL WITHSTAND EXPOSURE TO 260°C PEAK TEMPERATURE
 FOR 20 SECONDS IN A CONVECTION, INFRA-RED OR VAPOR PHASE REFLOW
 OVEN. SEE APPLICATION NOTES/PROCEDURES IF THEY ARE AVAILABLE.

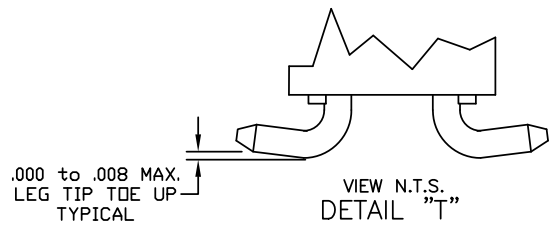
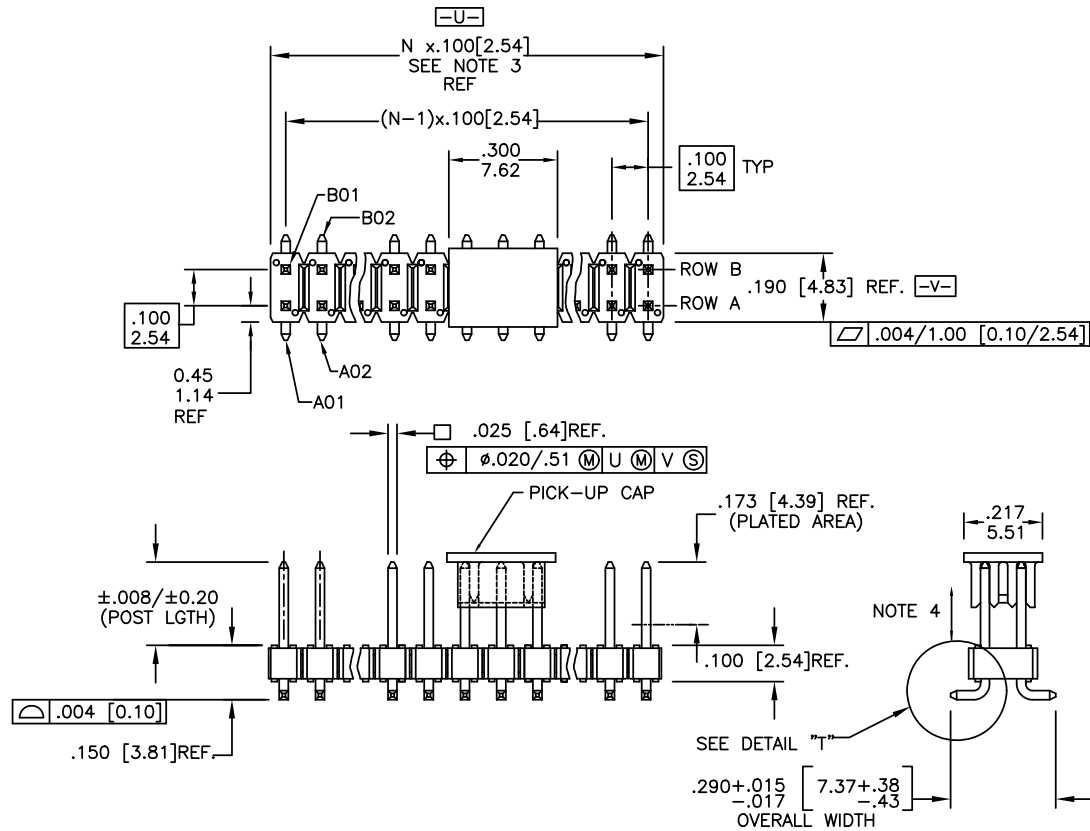


Copyright FCI.

www.fciconnect.com		surface 6.4 ISO 1302	tolerance std ISO 406 ISO 1101	projection A4	INCH/MM ↔
Dr	D.INGRAM	05/17/99	ANGULAR	0.X ±0.3	size
Eng	H.SUNDY	07/21/99	LINEAR	0.XX ±0.15	Scale
Chr	H.SUNDY	07/21/99	0° ±2°	0.XXX ±0.05	1.000
Appr	H.SUNDY	07/21/99	Product family BERGSTIK		ECN ELX-N-012227
title .100 UNSHROUDED HDR. DUAL ROW VERT. SMT.					Spec ref
catalog no					CUSTOMER
dwg no 54202					Rev. W
sheet 1 of 3					

rev	ecn no	dr	date
W	ELX-N-012227	J.Z	2012-07-15
R	M07-0092	MHT	2/07/07
S	M07-0361	MHT	8/14/07
T	M08-0208	MHT	7/18/08
U	M08-0279	MHT	9/30/08
V	N10-0438	ZJ	2010-12-28

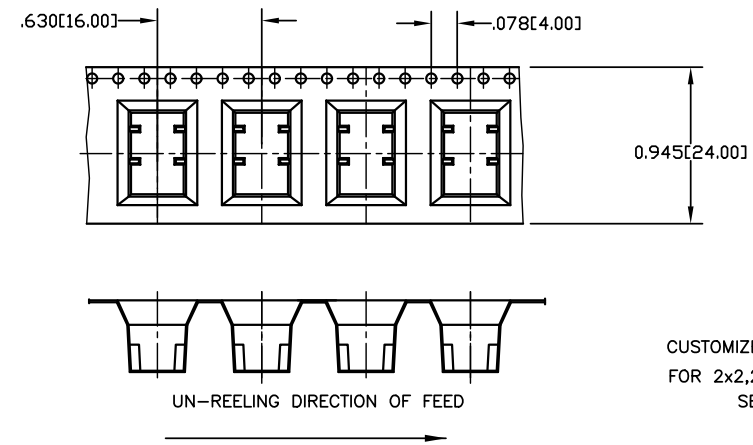
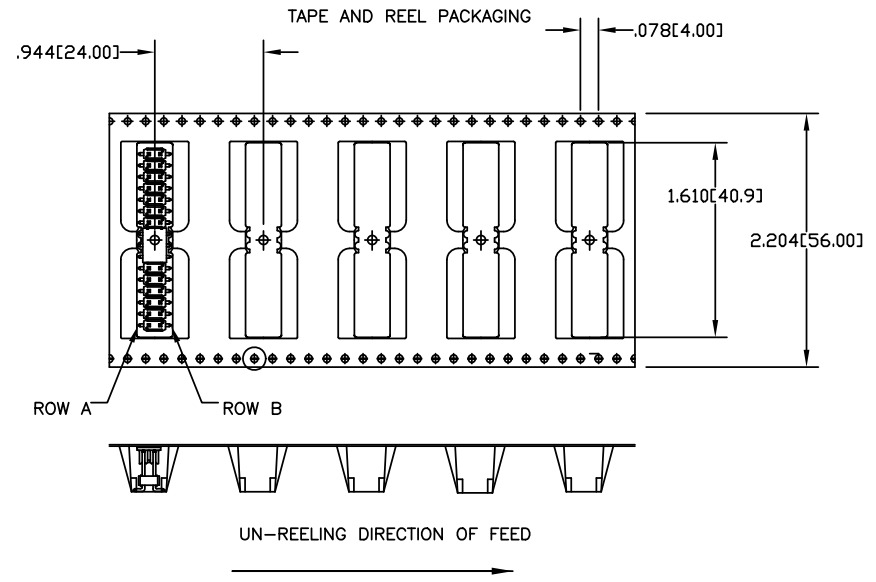
PRODUCT NUMBER
SEE TABLE



www.fciconnect.com			surface ISO 1302 ✓	tolerance std ISO 406 ISO 1101	projection A4	INCH/MM
			TOLERANCES UNLESS OTHERWISE SPECIFIED			
Dr	D.INGRAM	05/17/99	ANGULAR	0.X ±0.3	size	Scale
Eng	H.SUNDY	07/21/99	LINEAR	0.XX ±0.15	A4	1.000
Chr	H.SUNDY	07/21/99	0° ±2°	0.XXX ±0.05	ECN ELX-N-012227	
Appr	H.SUNDY	07/21/99	Product family	BERGSTIK	Spec ref	
FCI			title .100 UNSHROUDED HDR. DUAL ROW VERT. SMT.		dwg no 54202	Rev. W
			catalog no	CUSTOMER	sheet 2 of 3	

TAPE AND REEL PACKAGING

SIZE	LEAD STYLE 08 POST (0.230 [5.84])	LEAD STYLE 30 POST (0.318 [8.08])
2X2	YES	YES
2X3	YES	
2X4	YES	YES
2X5	YES	
2X6	YES	
2X7	YES	YES
2X8	YES	
2X9		
2X10	YES	
2X11	YES	
2X12		YES
2X13	YES	
2X14		
2X15	YES	
2X16		YES
2X17	YES	
2X18		
2X19		
2X20		



CUSTOMIZED CARRIER TAPE
FOR 2x2,2x3,2x4,2x5 SIZE.
SEE NOTE 5



Copyright FCI.

Cross Reference

CORE RANGE	EXTENDED RANGE
54202-X08XXLF	95278-X01-XXLF
54202-X30XXLF	95278-X02-XXLF

www.fciconnect.com			surface ISO 1302 ✓	tolerance std ISO 406 ISO 1101	projection A4	INCH/MM
TOLERANCES UNLESS OTHERWISE SPECIFIED			ANGULAR	LINEAR	size	Scale
Dr	D.INGRAM	05/17/99	0°	0.X	±0.3	1.000
Eng	H.SUNDY	07/21/99	±2°	0.XX	±0.15	
Chr	H.SUNDY	07/21/99		0.XXX	±0.05	ECN ELX-N-012227
Appr	H.SUNDY	07/21/99	Product family		BERGSTIK	Spec ref
FCI			title		.100 UNSHROUDED HDR. DUAL ROW VERT. SMT.	dwg no
			catalog no		CUSTOMER	54202
					sheet 3 of 3	Rev. W